

Minutes ETC meeting, November 21 st and 22 nd , 2018	 European forum for energy Business Information eXchange
December 17 th , 2018	ETC – ebIX® Technical Committee

Minutes ETC meeting, November 21st and 22nd, 2018

Date: Wednesday and Thursday November 21st and 22nd, 2018
Time: 09:00 – 18:00 and 09:00 – 16:00
Place: Park Plaza Victoria hotel, Amsterdam
Appendixes: **Appendix A**, ebIX® Rules for the use of UN/CEFACT Modelling Methodology (UMM 2)
Appendix B, Agreed additions to the ebIX® Business Information Model 2018.A
Appendix C, Proposals for update of the ebIX® Business Information Model

Attachment (see ebIX® file manager):

1. HRM_MR_Gateway operator & Communication Gateway - ebIX 20171116.docx: See item 5, Status: HG MR for “MP Gateway”
2. MR Party Admin - 20180301.docx: See item 6, Status: HG MR for “Party administrator”

1 Approval of agenda

Approved with the following additions:

- Report from IEC/WG16 meeting in Redmond November 2018, see item 3.1;
- IEC 57/2043/CDV and Customer Management (CM), see item 3.2;
- How to reference (map) information/data to a reference information model (CIM?)?, see item 7.1;
- Rename of Physical Status Code “E31 Demolished”, see item 7.5;
- Placement of end node (success) in activity diagrams, see item 7.6;
- New role for the HRM: Area Administrator, see item 7.7;
- How to guarantee interoperability over the processes in the energy industry?, see item 10.1;
- New role Metered Data Administrator, see item 15.1 under AOB;
- Question from RtR: are state diagrams needed in the Data view in the BRS?, see item 15.2 under AOB;
- Publication of HRM 2018-01 MD XMI version and change log, see item 15.3 under AOB;
- Change of Supplier Overview, see item 15.4 under AOB.

2 Minutes from previous meetings (meeting February 2018 and May 2018)

The minutes from previous meetings were approved without comments.

3 Status: ebIX®/IEC project

3.1 Report from IEC/WG16 meeting in Redmond November 2018

There was an IEC/WG 16 meeting in Redmond beginning of November. Some issues from the meeting is discussed under item “7.1, How to reference (map) information/data to a reference information model (CIM?)?” and “10.1, How to guarantee interoperability over the processes in the energy industry?”.

3.2 IEC 57/2043/CDV and Customer Management (CM)

Ove informed of the new “57/2043/CDV - Application integration at electric utilities – System interfaces for distribution management – Part 1: Interface architecture and general recommendations”, that among others describes the Customer Management (CM), see paragraph 3.3.2, starting at line 321.

4 Status My Energy Data

The IEC 62325-451-10 CD got several comments and a revised CD is expected within the end of the year.

5 Status: HG MR for “MP Gateway” (if the concept is finally defined in the German market)

Nothing new.

6 Status: HG MR for “Party administrator”

Awaiting HG.

7 ebIX® Business Information Model 2018.A

7.1 How to reference (map) information/data to a reference information model (CIM?)?

Ref. item “3.1, Report from IEC/WG16 meeting in Redmond November 2018” and “10.1, How to guarantee interoperability over the processes in the energy industry?”.

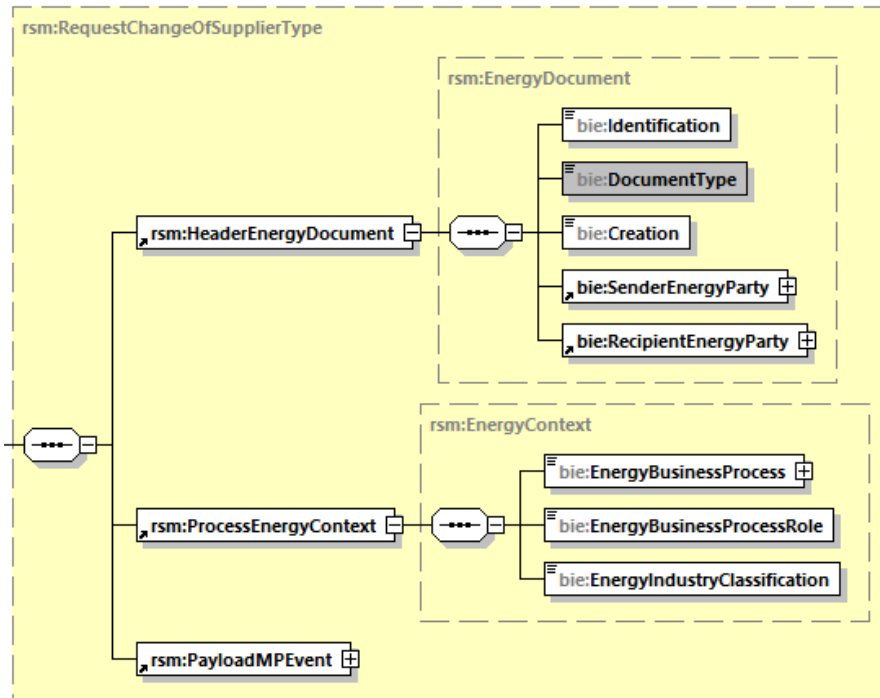
From Kees (ref. item 10.1, How to guarantee interoperability over the processes in the energy industry?):

- What shall we do with our “additions”-class and our “a-synchronous”-class?
- What shall we do with our document header and its coded values?
- What shall we do with the “entity”-classes we have (elements from the HRM in our class diagrams)?
- Which UMM2-elements can we miss in the business requirements? State diagrams?
- Which UMM2-elements can we miss in the business information model?

And, is it OK, since now we do our quality check on the BRSSs and BIMs, to use this opportunity to change to the use of the Accounting Point instead of the Metering Point in our BRSSs and BIMs, at least where the Accounting Point is meant?

Conclusion:

- We keep our “additions”-class and “asynchronous”-class for the time being.
- We keep our document header and its coded values in a separate class diagram (in an appendix?)
- The Document Type is already optional in the ABIE. We will from now on make the Document Type optional in the MBIE but keep showing the codes.



- We stop using the “entity”-classes from the HRM, i.e. we move AP ID, etc. into the root «Business Entity».
- We will start using Accounting Point instead of Metering Point for all structuring documents (master data).
- We remove state diagrams from the BRSS, i.e. we keep on using states in the activity diagrams in the BRSS.

Actions:

- Ove will update the structure module according to the decisions above.
- Kees will inform Greta that ebIX® wants to add Event to basic CIM instead of using Series.
- Jan will go through the TR and make a list over which updates that still are needed in basic CIM, and thereafter bring these into the weekly WG16 modelling calls.

7.2 Continue review and update of version 2018.A

Proposed updates are found in Appendix B and Appendix C.

7.3 QA of the MDS model and consistency of the MDS and EMD models

Ove had as action from previous meeting contacted NoMagic, asking for how to make a list over relations not used in any diagram, with the following answer:

It is possible to perform a Find in the model for all associations, and specify in Options (left bottom corner on Find dialog) to search for the elements that are unused in diagrams. After the search results are displayed, you can save the query as smart package. If you list these associations in the table, they will be excluded from search list, as table is a type of diagram.

Regarding the list of all diagrams the element are displayed on. It is possible to do in Generic Table using the Query, if you use 18.4 or later version.

1. Create a Generic Table with all dependencies and associations (they are element types)
2. When elements are listed, choose Show Columns > New Custom Column property
3. Turn on the Query dialog to Expert mode (Expert button is at the bottom left in the dialog)
4. Go to Create operation... and choose "Operation from Model" from Operations part
5. Remove the checkbox next to "Apply Filter", find the operation "UsageInDiagrams" and select it
6. For Element click "Reset" and choose "Contextual Variable" from "Other" group
7. Name your column and submit changes.

Your column in the table now will list all the diagrams where the association/dependency in the table is included in. That means it will list the table they are displayed as well.

The Find command worked fine, hence Ove had delete all associations and dependencies not used in any diagram(s) from the model.

Ove had also as action from previous meeting cleaned up the naming of request/confirm/reject upfront Metering Point characteristics.

Finally, Ove had as action from previous meeting cleaned up the Notify Change of Supplier UseCase and activity diagram – using new and old Affected role in both diagrams. And, similar updates of all similar UseCase and activity diagrams.

In addition, Ove should add «mapsTo» to the «Harmonised Role» in the UseCase diagrams. However, Ove wanted to reopen this decision, partly because Vlatka no longer required it and partly because the mapping is shown in the Partner View in the BRs.

Conclusion:

- «mapsTo» dependencies shall only be shown in the Partner View in the BRs.

The item is closed.

7.4 Use of XOR in combination with cardinalities

Continued action:

- Kees will make a proposal for update the “ebIX® introduction to Business Requirements and Information Models” with a chapter explaining the relationship between cardinalities and OR/XOR, including:
 - o XOR and cardinality of [1] lead to a required choice in the XML schema;
 - o XOR and cardinality of [0..1] lead to an optional choice in the XML schema.

7.5 Rename of Physical Status Code “E31 Demolished”

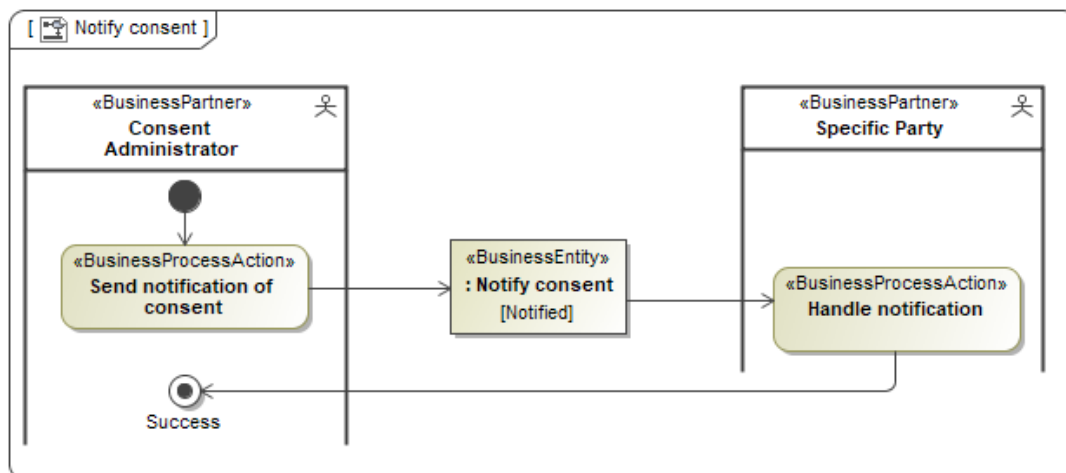
For information, the Physical Status Code E31 was renamed to “Decommissioned” during the RtR project meeting October 10th. Below is the original (unchanged) code list:

PhysicalStatusCode	
E22	{codeName = "Connected"}
E23	{codeName = "Disconnected"}
E30	{codeName = "Under construction"}
E31	{codeName = "Demolished"}

The item is closed.

7.6 Placement of end node (success) in activity diagrams

EBG asks if end nodes (success) in activity diagrams showing notifications, should be in the “start swim lane” or the “end swim lane”?



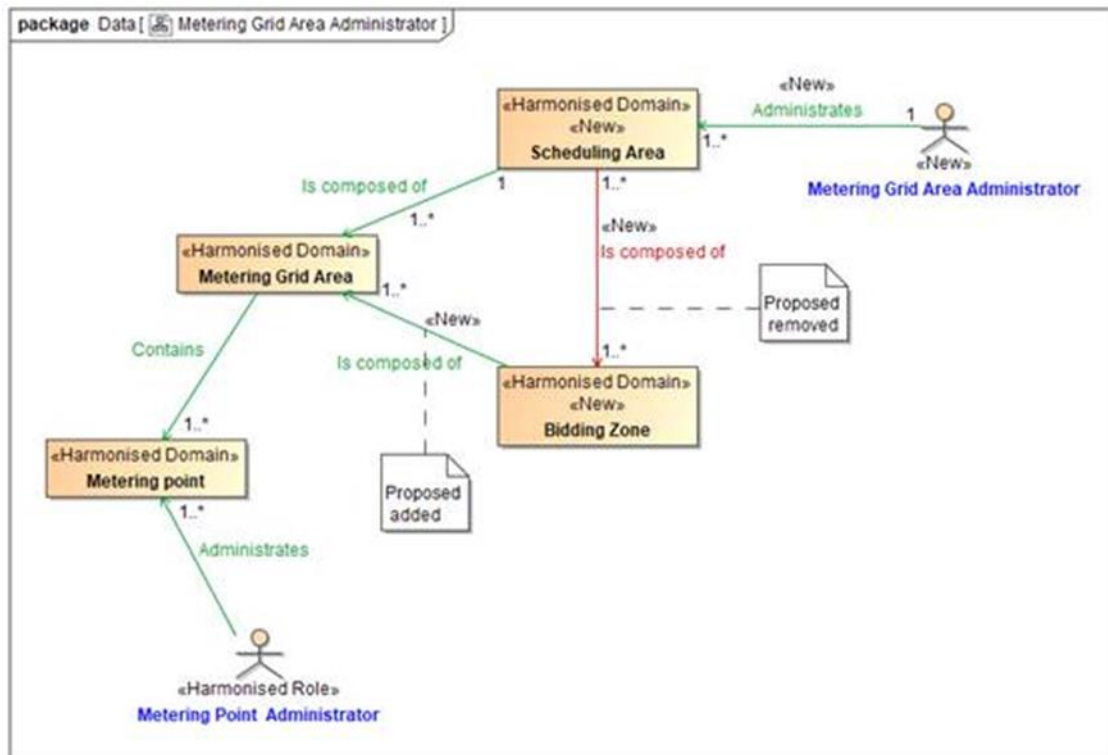
Conclusion:

- For the time being we keep modelling the Success as earlier, i.e. no change.

The item is closed.

7.7 New role for the HRM: Area Administrator

The BRS for Area administration was reviewed and it was suggested to suggest adding a new role for an Area Administrator, responsible for master data for an area (MGA, Scheduling Area, Bidding Zone etc.). During the discussions we stumbled over the many-to-many association between Scheduling Areas and Bidding Zone, which basically doesn’t define anything. We think it could be a solution to replace the many-to-many association with a new association between Bidding Zone and MGA, in addition to the already existing association between Scheduling Area and MGA:



Action:

- The proposal will be forwarded to the HG.

The item is closed.

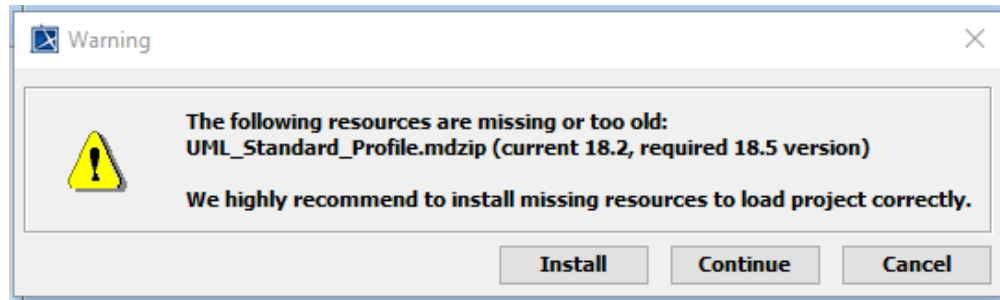
8 Upgrade of MagicDraw from version 18.2 to 18.5 or 19.0

Status for MD versions used in the ebIX® countries:

Responder	Current version	Response
Atrias	MagicDraw 18.2	Belgium will migrate to EA, but has a MD licence that will last until the end of this year. Belgium has no problems with ebIX® upgrading.
BDEW	MagicDraw 17.?	Can probably not read the current ebIX® model anyway and has no problems with an upgrade.
Fingrid	MagicDraw 18.3	Do not know if there will be any problems.
Svenska kraftnät	MagicDraw 18.5	Upgraded beginning of May, no problems yet.

Ove and Jan had tested how a MagicDraw (MD) model created by MD version 18.5 works with MD versions 18.2, with the following result:

- When opening the 18.5 model, the following message appear:



- o When choosing to install, the model is not loaded;
- o When choosing to continue, the model opens with the following warning in the MD “Notification Window”:

[2018.09.10::09:22:24] HRM 2018-01 20180823_18-5-version.mdzip has been saved with a newer MagicDraw version 18.5 and may have information not supported by version 18.2. Please use MagicDraw version 18.5 or higher. If you still need to use MagicDraw 18.2, back up HRM 2018-01 20180823_18-5-version.mdzip to prevent data loss.
- o However, the model seems to work fine. The model can be saved as a 18.2 version and this model opens fine, without any errors or warnings.
- A MD 18.2 model opens fine in MD 18.5, without any warnings.

Conclusion:

- A decision is postponed until next meeting.

9 MDS BIMs

Review of MDS BIMs, see ebIX® File Manager:

- BIM for Change of Transport Capacity Responsible Party;
- BIM for End of Metered Data Responsible;
- BIM for Customer move;
- BIM for Change of Metered Data Responsible

The BIM for Change of Metered Data Responsible was reviewed and it was noted that the ASBIE “Metering Point Domain Location” must be renamed to “Accounting Point Domain Location” (added to Appendix B).

The following modelling rules was agreed for BIMs:

- We may use abbreviations for Roles and Domains, but only if needed. If used, these must be explained in chapter “1.5 Actors, parties and roles”.
- Dependencies in the BIM mapping tables shall be stored in the Information view.

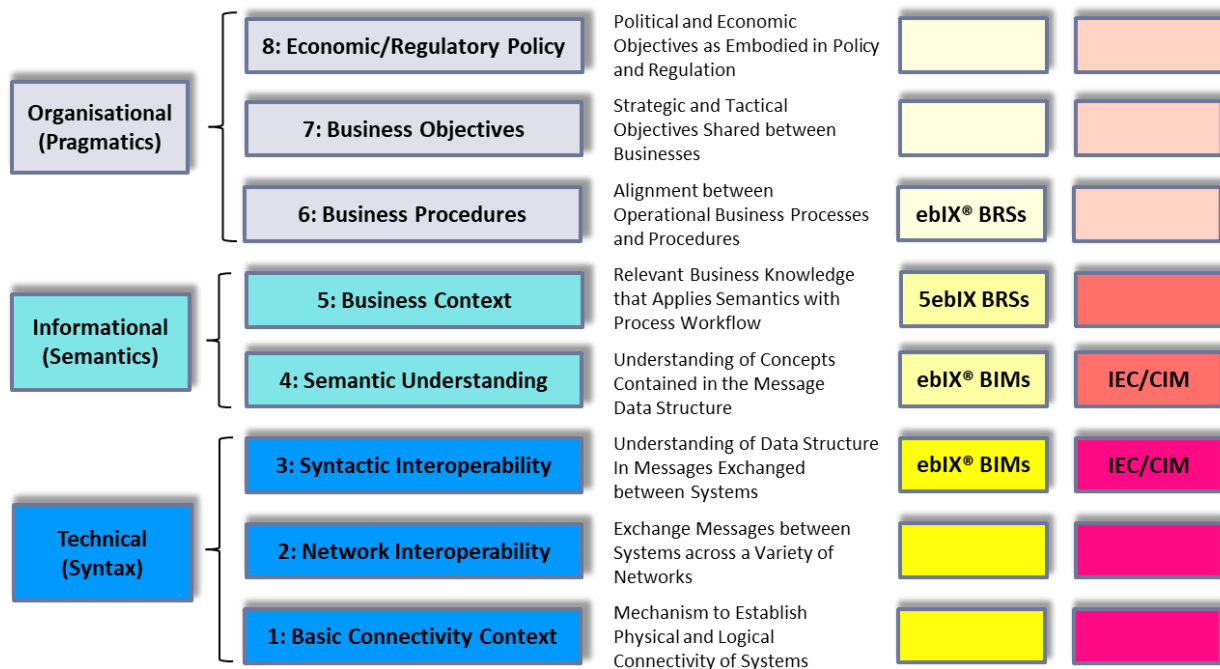
Action:

- Ove will make BIMs from the ebIX® BRSSs. See timeframe under item “15.5, ETC workplan”.

10 What levels are different “standards” covering

Ove had as action from previous meeting made a slide adding two columns to the three columns in the picture from the report *First Interim Report of the Working Group's findings on Electricity and Gas Data Format and Procedures* (sent from Kees January 31st), one for ebIX® and one for IEC/CIM.

Interoperability categories as defined by GWAC



1) GWAC = GridWise Architecture Council

2) Based on "First Interim Report on Electricity and Gas Data Format and Procedures" from "European Smart Grids Task Force, Expert Group 1 – Standards and Interoperability, Working Group on Data Format & Procedures"

The item is closed.

10.1 How to guarantee interoperability over the processes in the energy industry?

See also item "3.1, Report from IEC/WG16 meeting in Redmond November 2018" and "7.1, How to reference (map) information/data to a reference information model (CIM?)?"

Kees informed:

Friday November 2nd, Kees had a discussion with the other subgroups in SGTF EG1. The topic has been triggered by Willem Strabbing. Basically, it comes down to: given all the present subgroups, how do we now and later guarantee interoperability over the processes?

After some discussion, I have suggested to look for a solution along the following lines:

1. Harmonize business requirements into a core reference model and then keep on referencing this model. This isn't new, we already more or less adopted this by now in EG1;

2. Use a reference information/data model and map all data elements in business to this reference information model. This is new. After some discussion, we agreed that this will be fine, and we will include this in our recommendations.
3. Choose a reference information model. This is new and is the consequence of item 2. Most likely outcome: basic IEC CIM.
4. Then we went on discussing the nature of CIM, what is basic, what are CC's, how interoperability is to be improved by a well-defined usage of standard elements and will be harmed by an undefined usage. Steps in development from top to bottom where the standard elements are step-by-step being restraint and regional/national options are introduced.

I will have to include this in a presentation for ebIX® Forum. I have to use this also in the upcoming EG1 editorial team meeting next week. And as a consequence, I will also present it the week of November 5th at the TC57/wg16 meeting, so Jim and the others know what to expect and also what Europe will be expecting from IEC in the near future.

The item is closed.

11 Code lists from Magic Draw model in Word format

Continued action:

- Ove will make a first proposal, to be reviewed at the next ETC meeting.

12 Status for update of the TT (Transformation Tool)

The latest status is that the TT is working properly and that we have received an updated documentation. However, the quality for the documentation must be verified. A mail was sent to the ETC members, asking them to review the documentation before December 21st this year.

13 Creation of an ebIX® technical presentation

Jan had as homework reviewed the technical ebIX® PowerPoint presentation shown in Warsaw in November 2015 and the presentation used in Kiev in the autumn 2017.

The presentation was reviewed, updated and sent on circulation for comments to ETC until December 13th. Unless blocking comments, the presentation will thereafter be published at the ebIX® web site.

Item closed.

14 Next meeting(s), including start and end time.

Tuesday and Wednesday February 12th and 13th, 2019, in Oslo

Wednesday and Thursday April 10th and 11th, 2019, Warszawa

Tuesday and Wednesday June 25th and 26th, 2019, place to be decided

15 AOB

15.1 New role Metered Data Administrator

The RtR project asks ETC to make a MR for the new role Metered Data Administrator and submit it to the HG. Proposed definition of Metered Data Administrator:

A party that registers and distributes validated measured data.

- The Metered Data Administrator can be a centralised role in a data hub. If no hub, the Metered Data Administrator and the Metered Data Responsible will normally be the same company;
- A consequence of the introduction of the Metered Data Administrator is that we need a new data exchange from the Metered Data Responsible to the Metered Data Administrator, which not will be dedicated to a specific process using validated measured data.

The proposal was discussed, and it was proposed to rename the Metered Data Administrator to Metered Data Distributor.

Conclusion:

- The Metered Data Distributor will be introduced at the next HG meeting.
- RtR will be asked to rename Metered Data Administrator to Metered Data Distributor

The item is closed.

15.2 Question from RtR: are state diagrams needed in the Data view in the BRS?

Conclusion:

- We remove state diagrams from the Data View in the BRSs but keep the states in the model and the activity diagrams.

The item is closed.

15.3 Publication of HRM 2018-01 MD XMI version and change log

Action:

- Ove will send a mail to Alvaro asking him to publish also the MD version of the HRM 2018-01
- Ove will publish the HRM 2018-01 change log

The item is closed.

15.4 Change of Supplier Overview

Kees showed the Excel sheet “Change of Supplier Overview + calculations 20181116.xlsx”, which shows the usage of the ebIX® model for Change of Supplier for 20 European countries.

The document was distributed to the ebIX® Forum for information.

The item is closed.

15.5 ETC workplan

An ETC workplan was drafted.

Action:

- Ove will finalise the workplan by adding dates for the rest of the BIMs, so that all BIMs are finalised by the end of 2019.

Appendix A ebIX® Rules for the use of UN/CEFACT Modelling Methodology (UMM 2)

Question from Thibaut regarding the tags ebIX used on <<ENUM>> stereotype:

In the document “**ebIX® Rules for the use of UN/CEFACT Modelling Methodology (UMM) version 2**” it is written the following:

UN/CEFACT has specified profiles to be used as the meta model for UMM2:

- ❓ UMM Base Module
- ❓ UMM Foundation Module
- ❓ UML Profile for Core Components

ebIX® has additionally specified a profile.

On page 27 we find the different available/used tags for the stereotype <<ENUM>>

❓ Rules for the use of UN/CEFACT Modelling Methodology (UMM) version 2 page



But I find nowhere in UMM documentation anything about these tags for <<ENUM>>. The only information I found about <<ENUM>> was in the document “**UML Profile for Core Components (UPCC) – Version 1.0 – Final Specification - 2008-01-16**” but there not any tag is mentioned.

5.1.6 ENUM

Stereotype	ENUM			
Base Class	Enumeration (from UML 1.4.2 / 2.0 meta-model)			
Parent	N/A			
Description	The ENUM (Enumeration Type) represents an enumeration type. The ENUM stereotype is used to define a restriction on either a content- or supplementary component of a QDT.			
Tag Definitions	Tag Definition	Type	Multiplicity	Description
	N/A			

5.1.7 CodelistEntry

Stereotype	CodelistEntry			
Base Class	EnumerationLiteral (from UML 1.4.2 / 2.0 meta-model)			
Parent	N/A			
Description	The CodelistEntry is used to stereotype entries of an enumeration with stereotype ENUM.			
Tag Definitions	Tag Definition	Type	Multiplicity	Description
	CodeName	String	0:1	The CodeName carries the name of a certain code (like "France" in a country code list).

So I wanted to know where does these tags comes from as some of these are unknown in UPCC nor UMM2 profile in EA Sparx and I must have a good reason to ask to SparxSystems to adapt these profiles to what we have developed with ebIX®.

Response from Ove:

I do believe these tags are used by the TT. I also agree that the usage should be added to the "ebIX® Rules for the use of UN/CEFACT Modelling Methodology (UMM) version 2". I will add the topic to the next ETC agenda.

Response from Thibaut:

Indeed, these values are used for the TTool but I assume that these tags are coming from somewhere in UN/CEFACT.

In Naming and Design Rules v3 it is specified that Code list XSD must have as file name <Code List Agency ID>_<Code List ID> (unique ID) _<Version ID> so, means that we need this information for the code list inside the model... but I did not found any place where it is mentioned where we have to place this information for an code list (under a specified stereotype or not?)

[R 8A68]	A Code List XML Schema File MUST be created to convey code list enumerations for each code list being used.	1
----------	---	---

Page 36 of 217

XML Naming and Design Rules V3.0

2009-12-17

[R B443]	<p>A Code List XML Schema File MUST be given a file name that represents the name of the code list and is unique within the namespace to which it belongs using the form:</p> <pre><Code List Agency Identifier>_<Code List Identifier>_<Code List Version Identifier>.xsd</pre> <p>Where:</p> <ul style="list-style-type: none"> • Code List Agency Identifier – Identifies the agency that maintains the code list. • Code List Identifier – Identifies a list of the respective corresponding codes. • Code List Version Identifier – Identifies the version of the code list. 	1
----------	--	---

When we do a migration test from MagicDraw to EA Sparx we have some values correctly put under the UPCC3 <<ENUM>> stereotype (in the example here under codeListName, languageCode, modificationAllowedIndicator), some values put under UPCC3 <<ValueDomain>> stereotype (uniqueID, versionID) and some values incorrectly put under the enumeration itself (codeListAgencyIdentifier, codeListIdentifier).

«ENUM»

- codeListAgencyIdentifier = "260"
- codeListIdentifier = "BEL"
- codeListName = "BE_MeterDisplayTechnology"
- languageCode = "EN"
- modificationAllowedIndicator = false
- uniqueIdentifier = "BE000012"
- versionIdentifier = "0.1.A"

«PRIM»

- languageCode = "EN"
- uniqueIdentifier = "BE000012"
- versionIdentifier = "0.1.A"

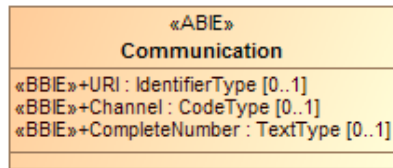
Tagged Values

Enumeration (BE_MeterDisplayTechnology)	
codeListAgencyIdentifier	260
codeListIdentifier	BEL
md_guid	_17_0_2_eac0340_1354810236249_960769_28495
UPCC3 - ENUMLibrary Abstract Syntax::ENUM (BE_MeterDisplayTechnology)	
businessTerm	
codeListAgencyID	
codeListAgencyName	
codeListID	
codeListName	BE_MeterDisplayTechnology
enumerationURI	
languageCode	EN
modificationAllowedIndic...	false
restrictedPrimitive	
status	
UPCC3 - ENUMLibrary Abstract Syntax::ValueDomain (BE_MeterDisplayTechnology)	
definition	
dictionaryEntryName	
minorVersionID	
revisionID	
uniqueID	BE000012
usageRule	
versionID	0.1.A

Appendix B Agreed additions to the ebIX® Business Information Model 2018.A

B.1 BIE changes, e.g. cardinalities

- 1) Add an attribute “Disconnection Contract” (Boolean) in MP Administrative Characteristics
- 2) Change the Country Name (text) in the MP Address class to Country (coded)
- 3) Add a new ABIE; Communication:



- 4) Rename the BBIE Unit Type in the ABIE Product Characteristics to Quantity Unit Type and add a BBIE Price Unit Type to the ABIE Product Characteristics
- 5) Verify that addition of an ASCC between the ACC Event and the ACC Address is on the list of ebIX® changes to UN/CCL
- 6) Add an ABIE Language Code to the ACC Address to the list of ebIX® changes to UN/CCL
- 7) Add a BBIE Type to the ABIE Metering Point Address

B.2 New enumerations and/or DT

- 1) Add an enumeration for ISO Language codes, based on ISO 639-1988
- 2) Add an enumeration for Energy Label Fuel type, based on CENELEC standard, imported from Atrias implementation
- 3) Add an enumeration for Energy Label Technology type, based on CENELEC standard, imported from Atrias implementation
- 4) Add enumeration “Communication channel”, ebIX® subset with the following literals, based on 3155:
 - AL Cellular phone
 - EM Electronic mail
 - FX Telefax
 - TE Telephone
- 5) Add an enumeration “Communication channel”, ebIX® subset, based on 3131 Address type, code with the following literals:
 - 1 Postal address: The address is representing a postal address
 - 3 Physical address; The address represents an actual physical location.
- 6) Remove all predefined facets, such as maxLength
- 7) All code lists should be checked for codes without a code name. These should be given a name or deleted.

B.3 New/changed associations

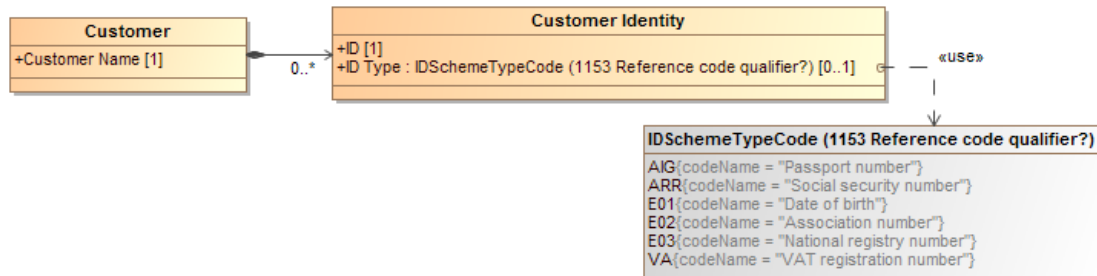
- 1) The ASBIE “Metering Point Domain Location” must be renamed to “Accounting Point Domain Location”.

Appendix C Proposals for update of the ebIX® Business Information Model

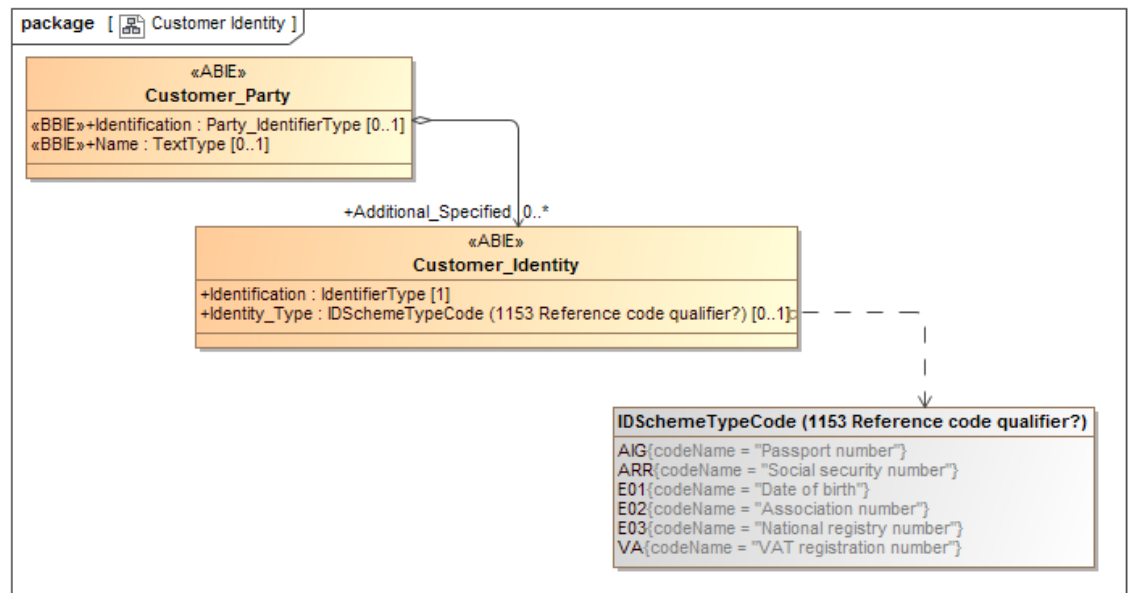
C.1 BRS for Alignment of characteristics for a Customer linked to a Metering Point

- a) Add the attribute “ID Scheme Type Code” to the ebIX® model.

As shown in the BRS:



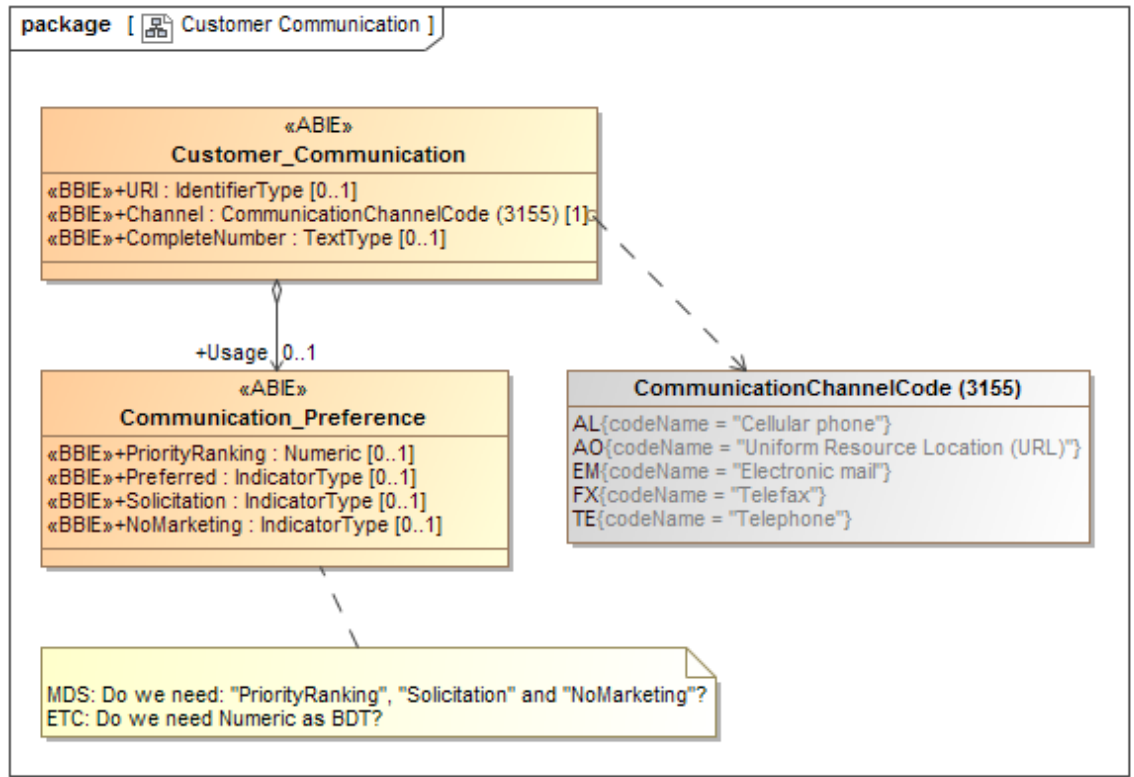
- o As shown in the ebIX® profile:



Action for ETC:

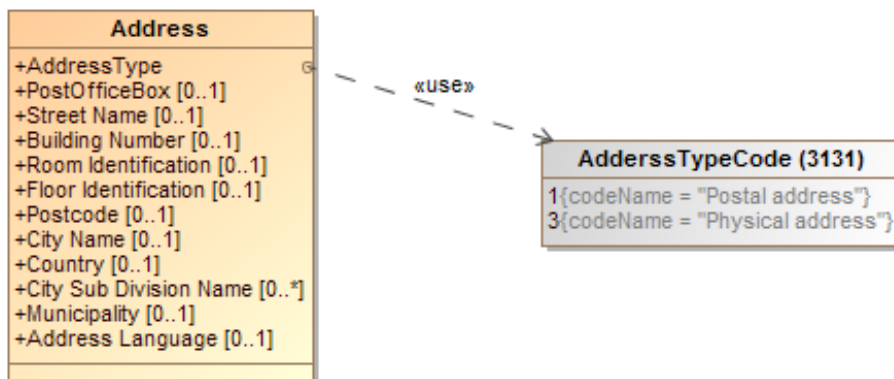
- o Approved by MDS – ETC will create the «ABIE» Customer Identity and related code list

b) Add the «ABIE» «Communication Channel Type» and the related Communication Channel Code:



Action for ETC:

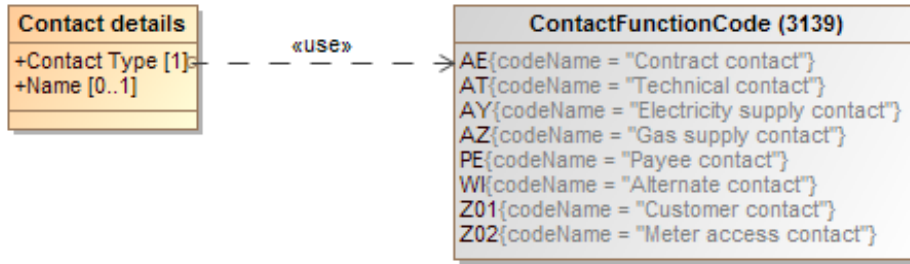
- o Approved by MDS – ETC will add the «ABIEs» Customer Communication and Communication Preference, and the related Communication Channel Code.
 - MDS will only use "Preferred" from Communication Preference
- c) Add an Address Type, based on UN/CEFACT 3131 Communication Channel Code:



Action for ETC:

- o Add Type to the «ABIE» Metering Point Address
- o Add the enumeration Address Type Code

d) Add a new enumeration “Contact function code” based on “3139 Contact function code”:



MDS requirements	3139 Contact function				
	code	name	definition	MDS comments	ETC comments
Main contact	AY	Electricity supply contact	Department/person to contact for matters regarding electricity supply		
	AZ	Gas supply contact	Department/person to contact for matters regarding gas supply		
	BF	Service contact	Department/person to be contacted in service matters.		possible alternatives for “Main contact”
	IC	Information contact	Department/person to contact for questions regarding transactions.		
	CU	Customer contact	The main department/person to contact at the customer		New UN/CEFACT code
Neighbour, House keeper (caretaker)	WI	Alternate contact	Alternate department or person to contact	MDS wants one combined code	
	AV	Maintenance contact	Department/person to contact for matters regarding maintenance		
Invoice contact	PE	Payee contact	Department/employee to be contacted at the payee		
Technical	AT	Technical contact	Department/person to contact for matters regarding technical issues.		
Meter reading	AQ	Quantity surveyor contact	Department/person to contact for matters regarding quantity surveying	MDS wants a new UN/CEFACT code (see below)	
	MA	Meter access contact	Department/person to contact for matters regarding meter reading, including access to the Meter		New UN/CEFACT code
Contract contact	AE	Contract contact	Department/person to contact for matters regarding contracts	NEW	

Action for ETC:

- o ETC will create the enumerations

Action for MDS:

- o The BRS will be republished when new codes have been approved by UN/CEFACT

C.2 General question for later elaboration

Can we remove the Document Name Code from the ebIX® models?

Status:

- The question will be kept for later elaboration

C.3 BRS for Request Change grid responsibility

- a) ETC is asked to find Document Name codes for:
 - o Request change grid responsibility;
 - o Response change grid responsibility;
 - o Notify change grid responsibility;
- b) And Business Reason codes for Change grid responsibility.

Status:

- o Awaiting finalisation of the BRS from MDS

C.4 Requests from EMD

- a) How to represent the exchange of calorific value in ABIEs

C.5 General model updates

- a) Replace the ACCs, BCCs etc. in the current CEFACT Profile with the “CEFACT Profile_Recast.mdzip” from Belgium and add generalisation from the “ebIX® assembled code list” to the related Belgian code list, received from Thibaut.
- b) Make the usage of “Time of Use” and “Meter Time Frame” consistent
 - o Check what is agreed with IEC in the TR
 - o Check what is the significance of “Time of Use”/“Meter Time Frame” in the proposal from Atrias
 - o Make the ebIX® model (Business requirements view and BIES) in line with the Atrias proposal
- c) At previous meeting, the ABIE MeteringPoint_Characteristic was split into AdministrativeMeteringPoint_Characteristic and PhysicalMeteringPoint_Characteristic. Due to this change, both the MDS and the EMD part of the ebIX® model must be corrected. Ove had corrected the MDS part, but noted that also the EMD document “Mapping Validated Data for Labeling for Certificate Issuer” needs to be corrected.

«ABIE»	
AdministrativeMeteringPoint_Characteristic	
«BBIE»+MeteringPoint_Type	ebix.org::BDT::MeteringPointType_CodeType
«BBIE»+MeteringMethod_Type	ebix.org::BDT::MeteringMethod_CodeType
«BBIE»+SettlementMethod_Type	ebix.org::BDT::SettlementMethod_CodeType
«BBIE»+GridConnectionContract_Type	ebix.org::BDT::GridAgreementTypeDescription_CodeType [0..1]
«BBIE»+Tax_Type	ebix.org::BDT::CodeType [0..1]
«BBIE»+AdministrativeStatus_Type	ebix.org::BDT::Administrative_Status_CodeType [0..1]
«BBIE»+ContractedConnectionCapacity_Value	ebix.org::BDT::MeasureType [0..1]
«BBIE»+ScheduledMeterReading_Date	ebix.org::BDT::DateTimeType [0..1]
«BBIE»+MeterReadingFrequency_Duration	ebix.org::BDT::DurationType [0..1]
«BBIE»+StandardLoadProfile_Type	ebix.org::BDT::StandardLoadProfile_CodeType [0..1]
«BBIE»+MeteredDataCollectionMethodCode_Type	ebix.org::BDT::MeteredDataCollectionMethod_CodeType [0..1]
+MeteringGridArea_Used	ebix.org::ABIE::Domain_Location [0..1]
+BalanceGroup_Used	ebix.org::ABIE::Domain_Location [0..1]
+ContractedConnectionCapacity_Included	ebix.org::ABIE::Product_Characteristic [0..1]
+AggregatedReceptionStation_Used	ebix.org::ABIE::Domain_Location [0..1]
+CalorificValueArea_Used	ebix.org::ABIE::Domain_Location [0..1]
+Labelling_Included	ebix.org::ABIE::Generation_Characteristic [0..*]
«BBIE»+PhysicalStatus_Type	
«BBIE»+VoltageLevel_Type	
«BBIE»+PressureLevel_Type	

- d) ebIX® Rules for the use of UN/CEFACT Modelling Methodology (UMM 2) - See question from Belgium in Appendix A.