

Minutes ETC meeting, December 15th, 2021	 European forum for energy Business Information eXchange
December 21 st , 2021	ETC – ebIX® Technical Committee

Minutes ETC meeting, December 15th, 2021

Date: Wednesday December 15th, 2021
Time: 10:00 – 12:00 and 13:00 to 15:00
Place: GoToMeeting
Present: Jan (NL), EDSN
Jan (SE), Svenska kraftnät
Kees, TenneT
Ove, Edisys

Attachment:

1. Appendixes for ETC minutes (docx)
2. ETC workplan (see ebIX® file manager at <https://filemanager.ebix.org/#>)

1 Approval of agenda

The agenda was approved with the following changes:

- The meeting March 1st was moved to February 23rd.
- The meeting January 18th was moved to January 21st.
- Item 3.2 “How to add additions to CIM” was renamed to “How to maintain the common cloud version of ESDMP”.

2 Approval of minutes from previous meetings (October 18th and 21st, and November 24th)

The minutes from previous meetings (October 18th and 21st, and November 24th) were approved after update of the decision under item 3.1.2. from November 24th:

“The national models shall be based on the ESDMP with national customisation”.

3 Resolve ebIX®/IEC issues

3.1 Making a European Style Downstream Market Profile (ESDMP)

3.1.1 [MRs to WG16 CIM modelling team and Information from IEC meetings](#)

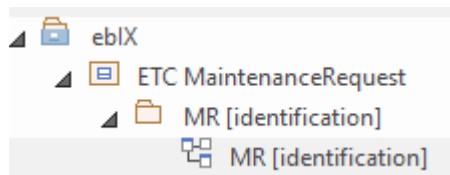
Noting new reported.

3.1.2 [MRs based on Dutch requirements](#)

Jan (SE) showed the Word document where changes to chapter 8 of the TR are shown. As far as we know, all changes noted in this word document have been updated in Appendix A to the ETC agenda. However, not all these changes have been submitted to WG16 as MRs yet.

It was agreed to move Appendix A to a separate document “MRs from ebIX® to WG16” that for instance may be shared with the CIM EG Retail WG. For new MRs to be added, we will make two rows in the document: one row for changes to basic CIM and one row for changes to ESMP.

We will as homework make new rows in the “MRs from ebIX® to WG16” document for the Dutch and Nordic extensions not yet presented for ebIX® and/or WG16 – first for discussions in ETC. If we need artefacts to support a MR, this will be created in a separate package in the common cloud version of EA in the following structure:



Regarding item c) below:

- Jan (NL) showed these class diagrams at the previous meeting. However, the pilot project is ongoing. The second stage is expected ended today. More to come.
- Status to be followed up in coming ETC meetings.

Continued and new actions:

- a) Kees will add a MR to the series of other MRs that will be sent from ebIX® based on the Dutch requirements for changing the cardinality of the association between Acknowledgement_MarketDocument and Sender_MarketParticipant/Receiver_MarketParticipant from mandatory [1] into optional [0..1].
- b) Kees will try to come up with a refined table showing the Dutch MRs, including examples.
- c) Jan (NL)/Kees will make class diagram(s) for one (or some) BRSs where extensions to ESMP is shown with different colours and use extension classes and inheritance where new attributes are needed in an ACC.
- d) Kees will investigate the usage of a reference to a related document (probably only used in the acknowledgement in the Netherlands) and see if he can find a justification of the “rename of the association named Original Market Document to something more generic”.
- e) All will add rows to the “MRs from ebIX® to WG16 document” for the extensions not yet presented for ebIX® and/or WG16, for discussions in ETC.
- f) Jan (NL) will make a document as basis for addition of new rows to the “MRs from ebIX® to WG16 document” containing a functional overview of changes to CIM from the Dutch pilot project, based on the Dutch MBIE models.

3.1.3 [How to implement code lists in the European Style Downstream Market Profile \(ESDMP\)](#)

The item was postponed.

3.1.4 [Aligning the result from the Dutch and the Nordic IEC CIM pilot projects](#)

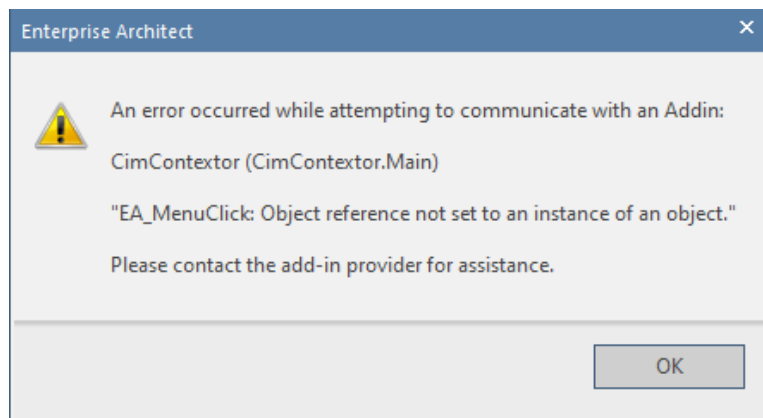
Ove, Jan (NL) (and others) will continue to update the common ESDMP by adding classes based on need extensions from the Dutch and Nordic CIM projects.

A few questions from Ove:

- At the ETC meetings October 18th and 21st, it was agreed that «ACC»s only shall have «primitive» data types from ESMPDataTypes but the current ACC package (ReferenceData / ReferenceModels / EuropeanStyleDownstreamMarketProfile / ESDMP_ACC) has all sorts of data types, including enumerations. Shall we replace all data types not being «primitive»?

Conclusion:

- Yes.
- When using the “Edit hierarchical connectors” function in CimConteXtor, Ove gets the following error message:



Hence, Ove has made the latest associations manually, i.e.:

- From MktActivityRecord to Reject_Reason

Shall we continue this way?

Conclusion:

- Yes.

Item closed.

3.1.5 [Status from WG14 taskforce for update of Organisation, Person and Party information](#)

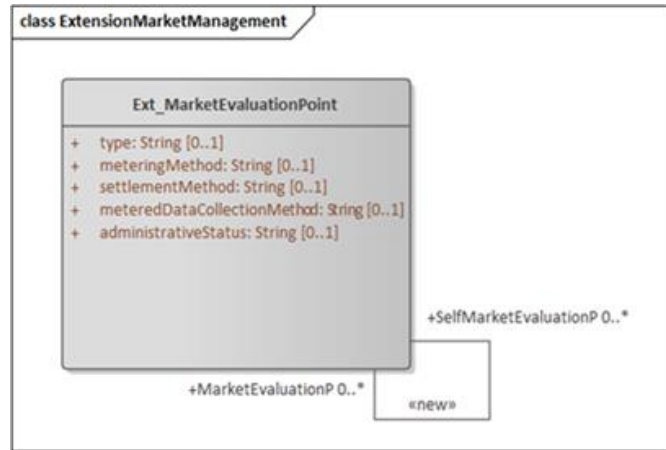
It was agreed to remove this item from the coming agendas, since nothing has happened during this autumn.

3.1.6 [Review of new associations that are candidates for MRs to CIM - From Jan \(SE\)](#)

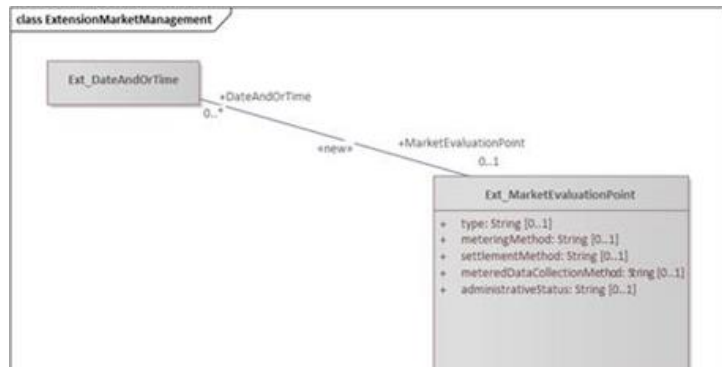
Below are some associations that we should go through and, perhaps, create MRs for.

- 1) A selfassociation (*..*) for MarketEvaluationPoint. See figure. This is not part of the TR. What would be the use case(s) behind this request?

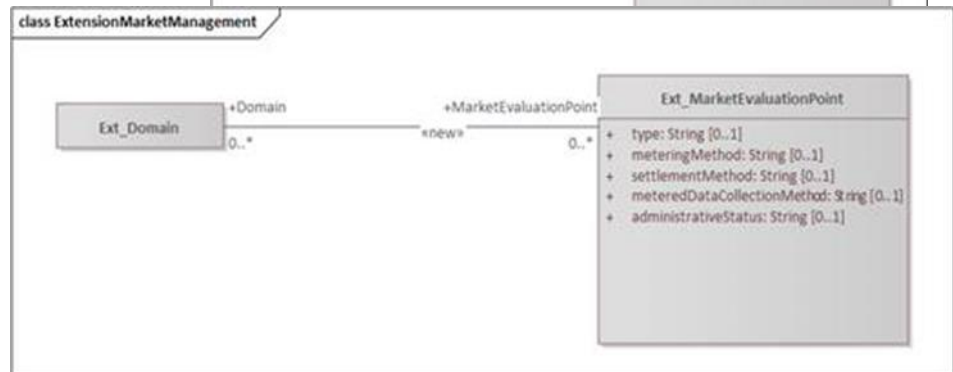
I know there are countries having “sub metering points”, is that the reason? (We plan to have it in the Swedish datahub, e.g. to handle metering that is done in non-concessional metering grid areas, but where we then associate the sub metering point to the metering point (accounting point) that is part of the concessional grid. Then the datahub can for instance receive metered data from production facilities within an industrial grid.)



An association (*..*) between MarketEvaluationPoint and DateAndOrTime. Not part of the TR. I think it is used to inform of the “Supply start date” for an accounting point. Is it used in other use cases? use cases?

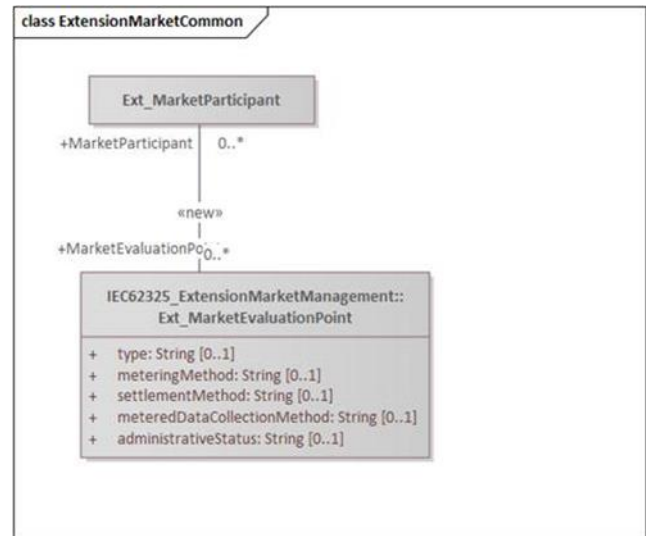


- 2) An association (*..*) between MarketEvaluationPoint and Domain. See TR, figure 120, however there with an “0..1” association to the Domain. The Domain class will tell the Metering Grid Area for the MarketEvaluationPoint.



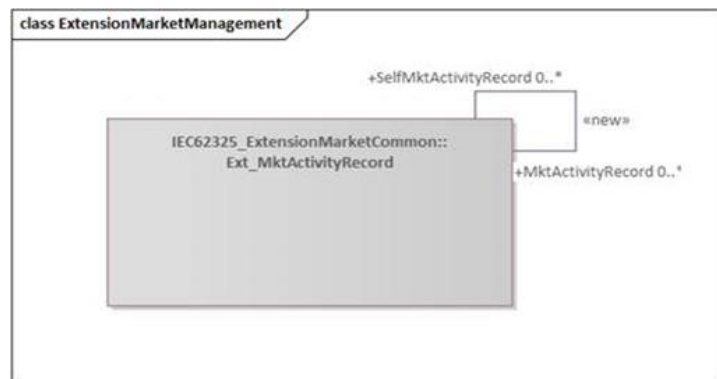
An Exchange point will have two areas associated with it, so there is a need to have more than “0..1” that was specified in the TR.

An association between MarketEvaluationPoint and MarketParticipant. In the TR there is suggested an association between the MktActivityRecord and MarketParticipant (see figure 122). However, what is needed is to establish the relation between a MarketEvaluationPoint and the parties linked to that point. For examples, see figure 112 and 114 in the TR

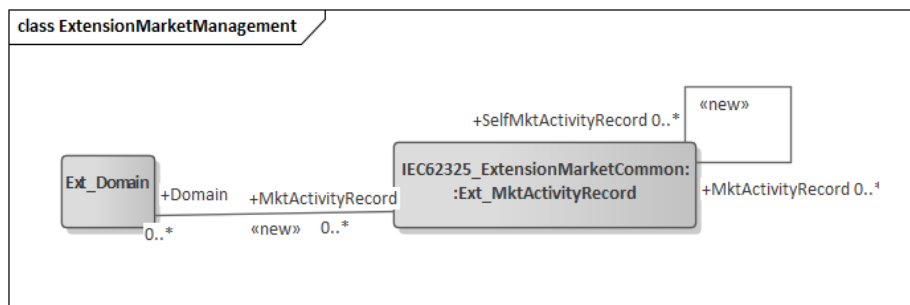


- 3) Regarding the association between MarketEvaluationPoint and MarketAgreement (see figure 120 in the TR), it was there suggested to put the attribute gridAgreementType into the MarketAgreement class. See however the latest MR to WG16 (February 2021) where that attribute is suggested to be put into MarketEvaluationPoint class.
- 4) Regarding the association between MarketEvaluationPoint and EnergyTechnologyAndFuel, see the latest MR to WG16 (February 2021), it is there suggested to be a many-to-many-association. However if there is no use case having a 0..*-association at the MarketEvaluationPoint side, we should rather just request a 0..1 <-> 0..* association.

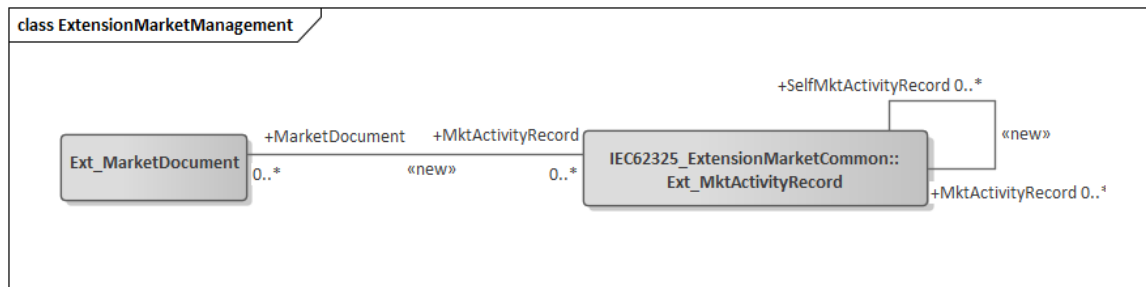
- 5) A selfassociation for MktActivityRecord. See TR, figure 122 and 115. Used when referencing from a rejection/confirmation.



- 6) An association between MktActivityRecord and DateAndOrTime. In the TR this is described as adding new attributes with date(+time) to the MktActivityRecord. However this will rather be solved with separate qualifiers (separate associations) to the DateAndOrTime class.



- 7) An association between MktActivityRecord and MarketDocument. Not in the TR. Will be relevant when exchanging documents and not payloads. It may also be used when ENTSO-E will start exchanging master data information.



- 8) Among the new associations suggested in the TR, we find the association between MktActivityRecord and Process. See figure 122. In ENTSO-E-documents the association to the Process class comes only from MarketDocument. But when focusing on payloads, MarketDocument will not be used, and when Process is needed, the association should be between Process and payload classes. No mapping was done in the TR, so it should be verified if Process will be used to identify the business process for what is exchanged.
- 9) Among the new associations suggested in the TR, we find the association between MktActivityRecord and Reason. See figure 122. In the TR it was discussed if reasons (especially when rejecting) should be specified in the attribute inherited from ActivityRecord, adding a new attribute, or associating with the existing class Reason. The latter was suggested – making it possible to specify more than one reason when rejecting.

Action October 21st, 2021:

- Jan (SE) will align the text in this paragraph with “Chapter 8 from IEC_TR_62325-103 ED1 status of updating CIM - September 2021.pdf”, but how?

Action:

- Jan (SE) and Ove will go through the items above and add rows to the “MRs from ebIX to WG16 document”.

Item closed.

3.1.7 [Some issues related to the ENTSO-E Acknowledgement document from NMEG](#)

Below is shown a proposal for an update of the ENTSO-E Acknowledgement document:

- Addition of an Original_MktActivityRecord with an association to Reason.
- No separate Transaction ID for each payload repetition.
- A Series class replacing the TimeSeries class.

Some questions:

- Can we use TimeSeries in Acknowledgement Document and Series in “measure documents”, i.e. should we remove the Series class from the proposed class diagram?

Conclusion:

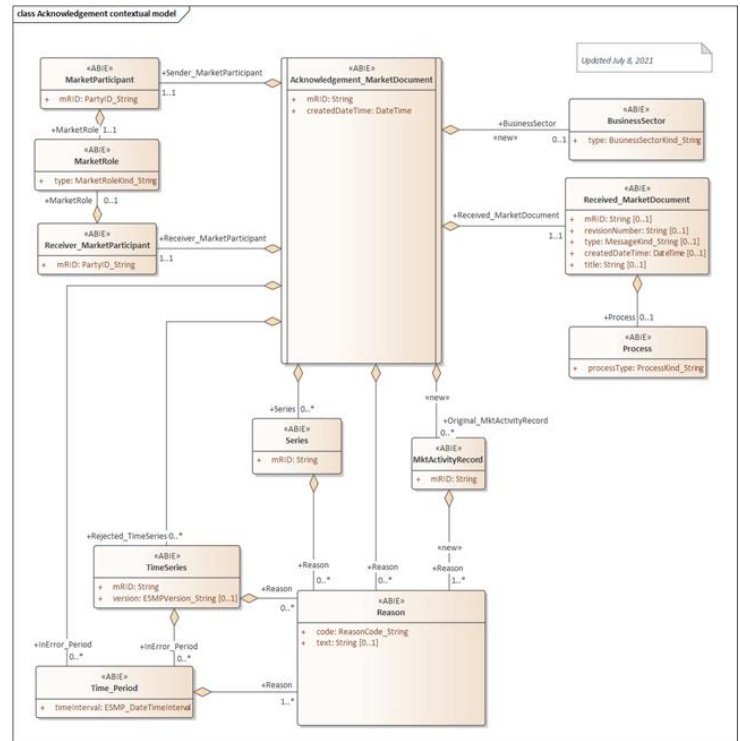
- o To be discussed when we discuss an ebIX® MR for the Acknowledgement document (also the Dutch pilot project has changes to the Acknowledgement document), under item “3.1.1, MRs to WG16 CIM modelling team and Information from IEC meetings”.

- Shall we use the “Response Condition Codes” (39 Approved / 41 Rejected) in the Reason / code attribute?

Conclusion:

- o In the Dutch pilot project, national codes are used, hence no conclusion.

Item closed.



3.1.8 [The ebIX® process for Maintenance Requests \(MRs\) on reference models \(basic IEC CIM\) and ESDM models](#)

Already handled under “3.1.1 MRs to WG16 CIM modelling team and Information from IEC meetings”.

Item closed.

3.1.9 [The governance for reference models \(basic IEC CIM\) and ESDMP models](#)

Alvaro is maintaining the latest version of the ESMP, based on decisions in CIM EG. However, these updates are extensions to the CIM 62325-351 standard.

Currently the ESDMP is maintained by ETC.

For the future we want a common ESMP and ESDMP containing ACCs, governed by ENTSO-E, ETSOG, the EU DSO Entity and ebIX® (?). The ABIEs should be maintained by ebIX® (at least for foreseeable future).

The item will be kept as a “follow up item” in coming agendas.

3.2 How to maintain the common cloud version of ESDMP

Jan (SE) informed that a new version of CIM 101 is published at the UCA web site, containing the latest .eap file having 61970, 61968 and 62325 (iec61970cim18v01_iec61968cim14v00_iec62325cim04v08_CIM101.0.eap), see [https://cimug.ucaiug.org/CIM Model Releases/Forms/AllItems.aspx](https://cimug.ucaiug.org/CIM%20Model%20Releases/Forms/AllItems.aspx).

Action:

- Jan (NL) will make a description of how we shall update and maintain the common cloud version of ESDMP.
- Jan (NL) will try to update the common cloud version of ESDMP with the new CIM 101.

3.3 Status for ENTSO-E CIM EG Retail WG (follow-up item on the agenda)

Jan (SE) informed that the ENTSO-E CIM EG Retail WG has got the ebIX® UseCases (BRs) and that he has presented an overview of these. Further Jan (SE) has informed both WG16 and the CIM EG Retail WG about the proposed usage of MktActivityRecord as the “Event class”, as proposed in the TR.

For the time being it is important to “educate” CIM EG Retail WG in how ebIX® has modelled the exchange of master data in the downstream market. On short time one of the most important tasks is getting the CIM EG Retail WG to accept the ebIX® model and CIM mapping around the master data for the Metering Point.

It is also important to inform the new EU DSO Entity about the ebIX® modelling of exchange of master data in the downstream market. Kees informed that Lucy and Vlatka has been in contact with the EU DSO Entity and that they think the EU DSO Entity is interested in the ebIX® model.

A next step will be measured data.

Conclusion:

- The ebIX® position regarding the CIM EG Retail WG is for the time being to continue the education of the ebIX® way of modelling master data.
- After some more education of the CIM EG Retail WG, Jan (SE) and Kees will try getting support for the ebIX® MRs to WG16 that currently are put on hold.

3.4 Preparations for coming WG16 meetings

3.4.1 [ebIX® MRs to WG16 – discussions with CIM EG](#)

Due to lack of time, the item was postponed.

3.5 Procedures for how to align updates of HEMRM and IEC MRs between EBG and ETC

Ove had as action sent the ToR for ETC to ebIX® Forum for four weeks of approval before publication. The document will be published at www.ebix.org in the beginning of January next year.

Item closed.

4 Request from EBG

Due to lack of time, the item was postponed.

5 EG1 status

5.1 Who do we (ETC) think is the EU Competent Authority?

Due to lack of time, the item was postponed.

6 Problems with TT (Eclipse) – To remember item (to be reopened when the TT is needed)

Due to lack of time, the item was postponed.

7 Resolve HG issues

Due to lack of time, the item was postponed.

8 ebIX® Business Information Model 2022.A

8.1 Use of XOR in combination with cardinalities

Due to lack of time, the item was postponed.

8.2 Continue review and update of version 2022.A

Due to lack of time, the item was postponed.

8.3 Status for publication of MD model 2021.A

Ove has a s action published the ebIX® model 2021.A at www.ebix.org.

Item closed.

9 Code lists from Magic Draw model in Word format

Due to lack of time, the item was postponed.

10 Review of ETC workplan

Due to lack of time, the item was postponed.

11 Next meetings¹

- Friday January 21st from 10:00 to 12:00 and 13:00 to 15:00, GoToMeeting.
- Tuesday February 1st from 13:00 to 15:00 and Friday February 4th from 10:00 to 12:00, GoToMeeting.
- Tuesday February 15th from 13:00 to 15:00, GoToMeeting.
- Tuesday February 23rd from 13:00 to 15:00, GoToMeeting
- Tuesday March 22nd from 13:00 to 15:00, GoToMeeting.
- Tuesday March 29th and Wednesday March 30th, 2022, with a common ebIX[®] Forum and ETC dinner the evening of Wednesday March 30th, at BDEW's offices in Berlin.

12 AOB

No items.

¹ All Face-to-face meeting starts 09:00 the first day and end at 16:00 unless otherwise explicitly stated.