



**Business Requirements for**  
**for**  
**End of Metered Data**  
**Responsible**

Status: Approved by ebIX® Forum

Version: 3.2

Revision: A

Date: February 2014

CONTENT

- A. About this document..... 3
- A.1. Comments to the ebIX® model ..... 3
- A.2. References..... 3
- A.2.1. Standards..... 3
- A.2.2. ebIX® Documents ..... 3
- A.3. Participants in the project ..... 4
- A.4. Main changes since last version ..... 4
- 1. Business Requirements View: End of Metered Data Responsible ..... 6
- 1.1. End of Metered Data Responsible (Business Process UseCase) ..... 6
- 1.1.1. Description ..... 6
- 1.1.2. Business Process..... 7
- 1.1.3. Request End of Metered Data Responsible ..... 8
- 1.1.3.1. Description ..... 8
- 1.1.3.2. Business Process..... 9
- 1.1.4. Notify Metering Point Characteristics ..... 9
- 1.2. Business Partner View ..... 10
- 1.2.1. Business Partners End of Metered Data Responsible ..... 10
- 1.3. Business Entity View..... 11
- 1.3.1. Short introduction ..... 11
- 1.3.2. Request End of Metered Data Responsible (Class Diagram)..... 12
- 1.3.2.1. Request End of Metered Data Responsible (State Diagram) ..... 13
- 1.3.3. Confirm End of Metered Data Responsible (Class Diagram)..... 14
- 1.3.4. Reject End of Metered Data Responsible (Class Diagram)..... 16

## A. About this document

This document is a business requirements specification for the End of Metered Data Responsible process within the structuring process of the European energy market.

As a general introduction ebIX® has published a separate document “Introduction to ebIX® Business Requirements and Business Information Models” [3]. The introduction also includes the generic model elements that are not specific for a particular business process.

In line with UN/CEFACT Modelling Methodology version 2 (UMM-2) ebIX® defines the business requirements before starting the actual modelling. These requirements have been specified by the ebIX® work group “Customer Switching (CuS)” and are the basis for the Business Information Model, which is published, in a separate document.

The Business Information Model is in turn the basis for the creation of XML schemas and is expected to be the basis for the specification of web services in a next version of the model document. Since ebIX® supports both EDIFACT and XML the model will also serve as the basis for the creation of Message Implementation Guides for the mapping to EDIFACT UNSM’s. The Business Information Model and the syntax specific structures are specified by the ebIX® “Technical Committee” (ETC).

### A.1. Comments to the ebIX® model

If you have comments or suggestions to the requirements please contact any member of the project group or directly to Ove Nesvik, [ove.nesvik@edisys.no](mailto:ove.nesvik@edisys.no).

### A.2. References

#### A.2.1. Standards

- [1] UML Profile for UN/CEFACT’s Modelling Methodology (UMM), Base Module 2.0.  
([http://www.unece.org/cefact/umm/umm\\_index.html](http://www.unece.org/cefact/umm/umm_index.html))
- [2] The Harmonized Role Model (for the Electricity Market) by ebIX®, ENTSO-E, and EFET  
([www.ebix.org](http://www.ebix.org))

#### A.2.2. ebIX® Documents

- [3] Introduction to ebIX® Business Requirements and Business Information Models  
([www.ebix.org](http://www.ebix.org))
- [4] Recommended Identification Schemes for the European Energy Market ([www.ebix.org](http://www.ebix.org))
- [5] ebIX® Business Requirements for metered data ([www.ebix.org](http://www.ebix.org))
- [6] ebIX® Business Requirements for Notify Metering Point Characteristics ([www.ebix.org](http://www.ebix.org))
- [7] ebIX® code lists ([www.ebix.org](http://www.ebix.org))

### A.3. Participants in the project

These Business Requirements as part of the ebIX® Model for the European Energy Market (see [3]) are made in a project with the members of CuS. For a list of members of CuS see [www.ebix.org](http://www.ebix.org).

### A.4. Main changes since last version

Old	New	Clarification	Date
<b>Draft version 3.2.A</b>			
	Addition of data element definitions	Update of references and textual corrections	20110619
	Data element definitions and introduction	Updated after CuS meeting August 2012	20121012
	General corrections, e.g. text alignment between CuS BRVs	Updated after CuS meeting December 2012	20130115
	General corrections, e.g. text alignment between CuS BRVs	Updated after CuS meeting February 2013	20130603
	General corrections, e.g. text alignment between CuS BRVs	<ul style="list-style-type: none"> <li>• Added a reference to “ebIX® Code lists</li> <li>• Added page shift for level one and two.</li> <li>• Removed actors from the top level UseCase</li> <li>• Renamed Grid User to Grid Customer</li> <li>• Renamed Initiating Role and Requesting Role to Initiator</li> <li>• Renamed Linked Role to Linked Party</li> <li>• Added stereotypes to enumerations</li> <li>• Add separate chapters for UseCases described in external BRV’s</li> <li>• Document names in Upper Camel Case</li> <li>• Rephrased endsWhen and beginsWhen in UseCase Descriptions</li> <li>• Updated links to UN/CEFACT documents</li> <li>• Rephrased post condition text in the top level UseCases</li> <li>• Responding document states are made explicit</li> <li>• State machines are update</li> </ul>	201306918

		<ul style="list-style-type: none"> <li>• In the “Business processes” (Activity diagrams), the end (“Success”) is moved to the recipients swimlane</li> <li>• Customer, Grid Customer and Supply Customer are used consistent</li> <li>• Reference links are shown in brackets</li> <li>• «<b>Business entity</b>» is added where missing</li> <li>• New classes are added for generic entities, such as MP and Meter</li> </ul>	
	General corrections, e.g. spelling errors		20140223
<b>version 3.1.A</b>			
	Layout of document	Updated according to a common ebIX® layout	20110525
	Class diagrams	Updated according to new ebIX® modelling principles	20110525
	Complete review and update	Updated during CuS meeting	20120127
	Review and update	Updated after CuS meeting March 2012	20120404

# 1. Business Requirements View: End of Metered Data Responsible

## 1.1. End of Metered Data Responsible (Business Process UseCase)

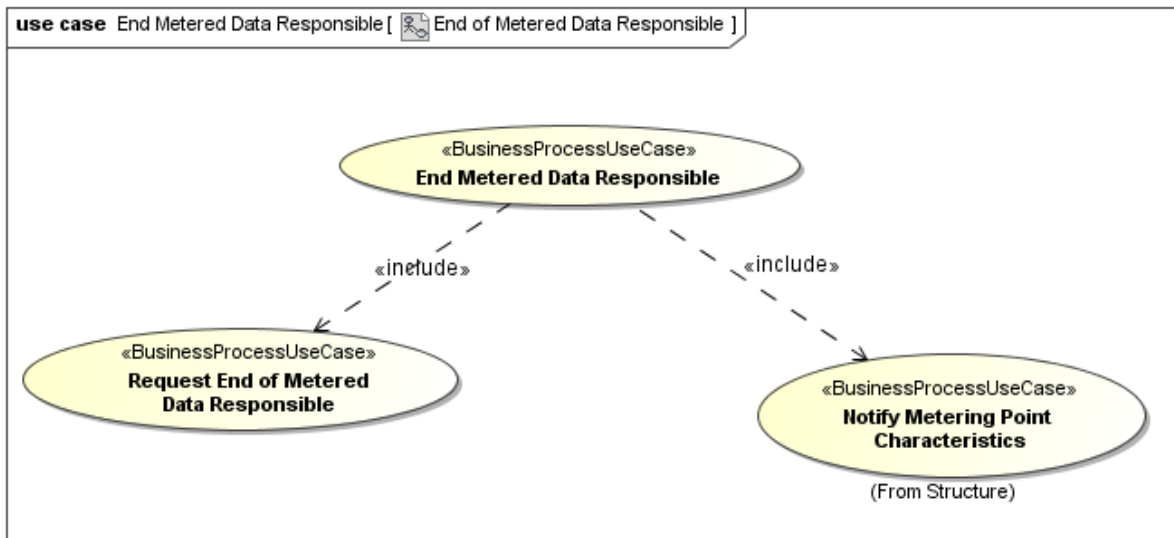


Figure 1 End of Metered Data Responsible

### 1.1.1. Description

UseCase description: End of Metered Data Responsible	
definition	<p>This is a process where the <i>Metered Data Responsible</i> requests End of its responsibility to be registered by a given date at the <i>Metering Point</i> in the <i>Metering Point register</i></p> <p>The <i>Metering Point Administrator</i> makes all necessary updates for the end <i>Metered Data Responsible</i>, including distribution of master data for alignment of the business partner data bases</p>
beginsWhen	When the <i>Metered Data Responsible</i> sends a request for end of its responsibility to the <i>Metering Point Administrator</i>
preCondition	<p>The <i>Metered Data Responsible</i> is responsible on the considered <i>Metering Point</i></p> <p>The <i>Metered Data Responsible</i> has notified the <i>Customer</i> of end of its responsibility</p>
endsWhen	<p>When the <i>Request End of Metered Data Responsible</i> has been confirmed or rejected</p> <p>If confirmed, master data have been distributed to <i>Linked Parties</i></p>
postCondition	The <i>End of Metered Data Responsible</i> is updated in the <i>Metering Point Register</i> and all relevant parties have aligned master data or (in case of rejection) nothing is changed in the <i>Metering Point register</i>

<p>exceptions</p>	<p>Dependent on national rules, the End of <i>Metered Data Responsible</i> process and the processes triggered by the End of <i>Metered Data Responsible</i> process (see below) may stop if a <i>Request Change of Metered Data Responsible</i> process is started before the confirmed end date.</p> <p>The End of metered data responsibility may trigger other processes, based on national rules:</p> <ul style="list-style-type: none"> <li>• Change of <i>Administrative status of Metering Point</i>; to be set to inactive.</li> <li>• Physical disconnection of the Metering Point.</li> <li>• Removal of meter.</li> </ul>
<p>actions</p>	<p>See 1.1.2</p>

### 1.1.2. Business Process

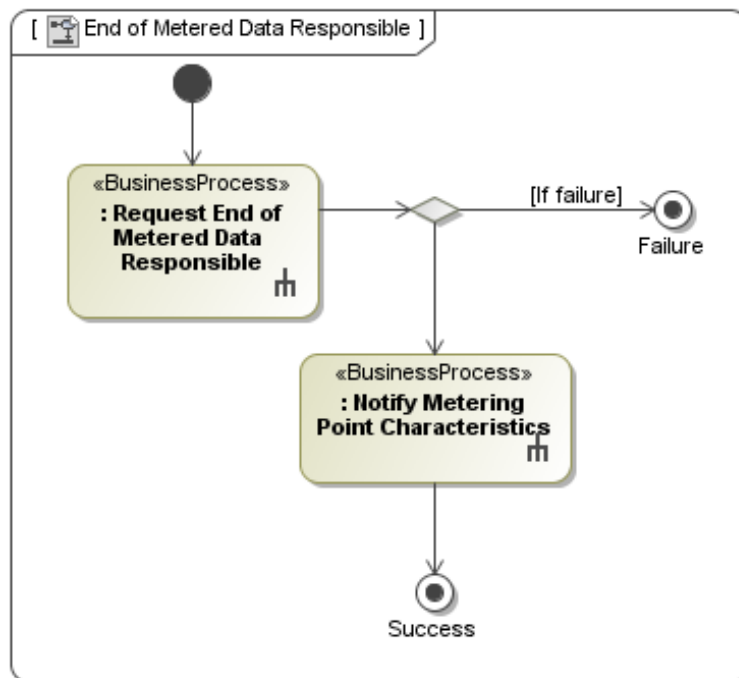


Figure 2 BP End of Metered Data Responsible

### 1.1.3. Request End of Metered Data Responsible

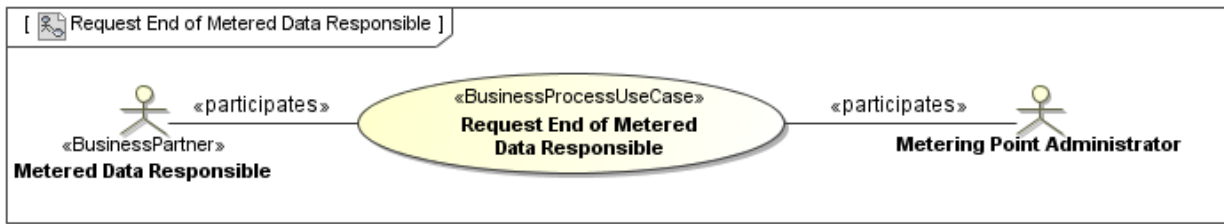


Figure 3 Request End of Metered Data Responsible

#### 1.1.3.1. Description

UseCase description: Request End of Metered Data Responsible	
definition	The <i>Metered Data Responsible</i> informs the <i>Metering Point Administrator</i> that it is <i>Metered Data Responsibility</i> for the indicated <i>Metering Point</i> ends
beginsWhen	When the <i>Metered Data Responsible</i> initiates an End of Metered Data Responsible process
preCondition	The <i>Metered Data Responsible</i> is responsible for the <i>Metering Point</i>
endsWhen	When the <i>Request End of Metered Data Responsible</i> has been confirmed or rejected.
postCondition	The <i>Request End of Metered Data Responsible</i> is confirmed or rejected by the <i>Metering Point Administrator</i> to the <i>Metered Data Responsible</i> .
exceptions	National rules may link this process to other processes, such as change of meter
actions	See 1.1.3.2



### 1.1.3.2. Business Process

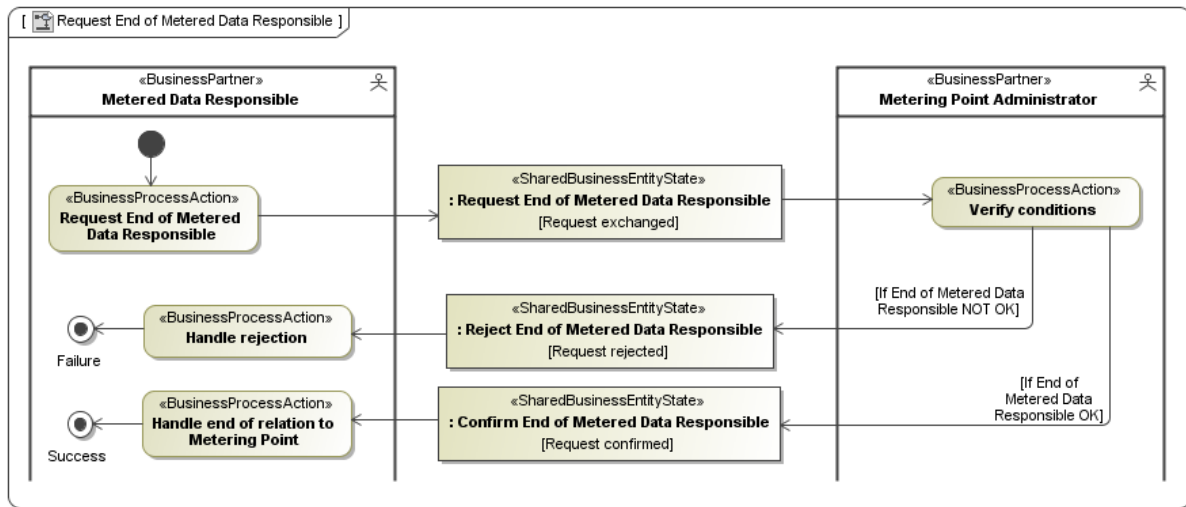


Figure 4 Request End of Metered Data Responsible

### 1.1.4. Notify Metering Point Characteristics

Notify Metering Point Characteristics is documented in a separate document, see [6]. In this document, the "Linked parties" are specified.

## 1.2. Business Partner View

### 1.2.1. Business Partners End of Metered Data Responsible

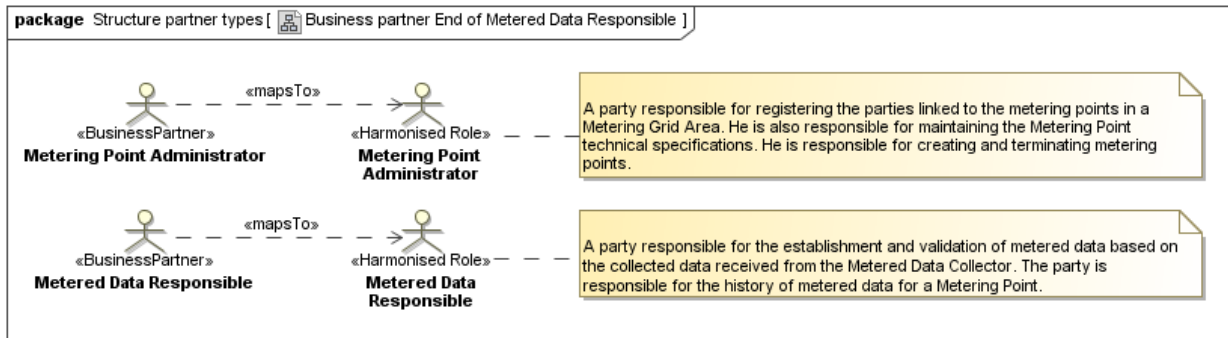


Figure 5 Business Partner End of Metered Data Responsible

## 1.3. Business Entity View

### 1.3.1. Short introduction

In these business requirements the ebIX® work group CuS has for the first time used the principle of specifying the core data set as business requirements. This core data set is defined as the set of information that is required when using synchronous web services as the exchange mechanism.

The information required for asynchronous web services is added as an option.

Finally, optional information needed to meet national requirements is specified.

For exchange of the core data set additional information elements must be added to conform to technical exchange standards. However, this is not regarded as a business requirement when defining the core data set, but as a requirement for technical implementation or mapping to syntax. Header and context information are added in the ebIX® Business Information Model.

It is important to note that it is assumed for defining the core data set, that Metering Points are uniquely dedicated to either electricity or to gas. Consequently, the specification of the business sector is not part of core data set anymore.

### 1.3.2. Request End of Metered Data Responsible (Class Diagram)

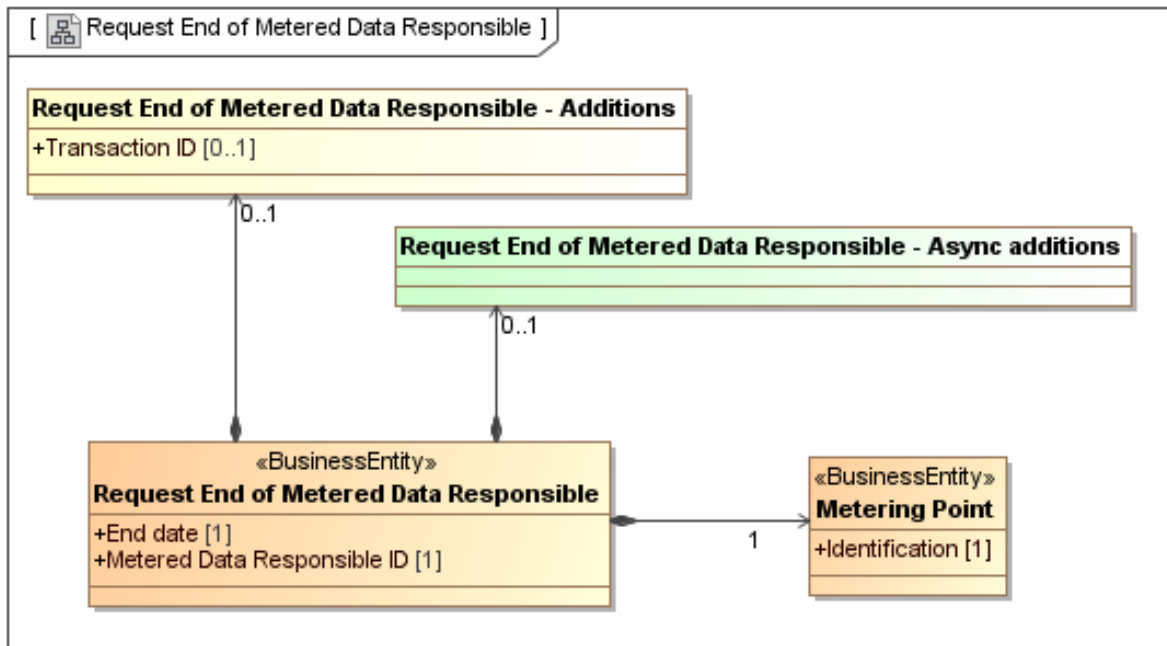


Figure 6 Request End of Metered Data Responsible

Element definitions, Request End of Metered Data Responsible	
<b>«Business entity»</b> Request End of Metered Data Responsible	The information set sent by a Metered Data Responsible to the Metering Point Administrator when requesting End of Metered Data Responsible.
End date	The date from which the Old Metered Data Responsible requests to end the metered data responsibility for this Metering Point.
Metered Data Responsible ID	The unique identification of the requesting Metered Data Responsible.
<b>«Business entity»</b> Metering Point	An entity where energy products are measured or computed
Identification	The unique identification of the Metering Point the End of Metered Data Responsible is intended for.
Request End of Metered Data Responsible Additions	Additional information related to Request End of Metered Data Responsible, to be agreed on a national level.
Transaction ID	The unique identification of this set of information given by the requesting Metered Data Responsible.
Request End of Metered Data Responsible Async Additions	Additional information, related to End of Metered Data Responsible, needed when using asynchronous communication, however not used in this request.

### 1.3.2.1. Request End of Metered Data Responsible (State Diagram)

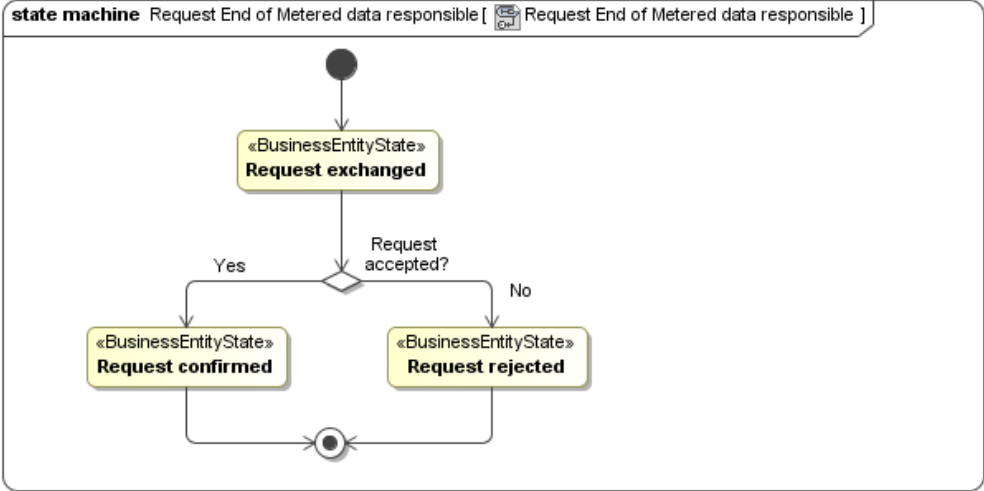


Figure 7 Request End of Metered Data Responsible

### 1.3.3. Confirm End of Metered Data Responsible (Class Diagram)

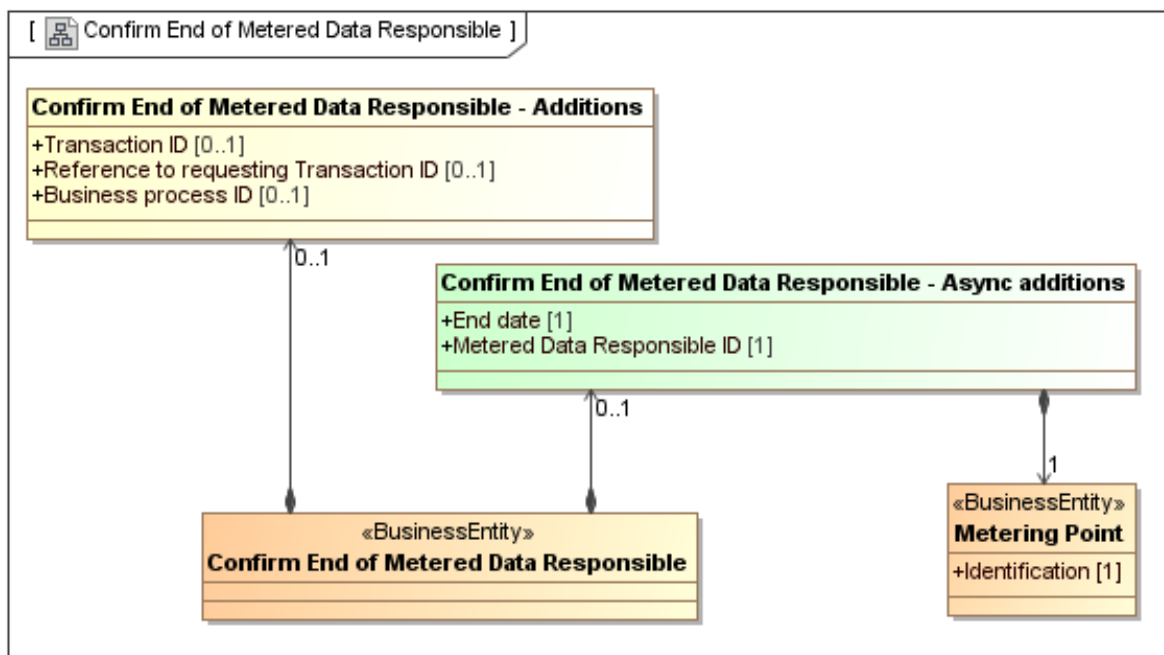


Figure 8 Confirm End of Metered Data Responsible

Element definitions, Confirm End of Metered Data Responsible	
<b>«Business entity»</b> Confirm End of Metered Data Responsible	The information set sent by the Metering Point Administrator to the requesting Metered Data Responsible to confirm this End of Metered Data Responsible.
<b>«Business entity»</b> Metering Point	An entity where energy products are measured or computed
Identification	The unique identification of the Metering Point this End of Metered Data Responsible is confirmed for.
Confirm End of Metered Data Responsible Additions	Information related to confirmation of End of Metered Data Responsible, to be agreed on a national level.
Transaction ID	The unique identification of this set of information given by the Metering Point Administrator given by the requesting Metered Data Responsible.
Reference to requesting Transaction ID	The Transaction ID from the request.
Business process ID	The unique identification, given by the Metering Point Administrator, of this requested End of Metered Data Responsible process that this response is a part of.
Confirm End of Metered Data Responsible Async Additions	Information related to the confirmation of End of Metered Data Responsible, needed when using an asynchronous communication.

---

End date	The requested date from when the Metered Data Responsible no longer is responsible this Metering Point.
Metered Data Responsible ID	The unique identification of the Metered Data Responsible that no longer will be metered data responsible for the Metering Point.

### 1.3.4. Reject End of Metered Data Responsible (Class Diagram)

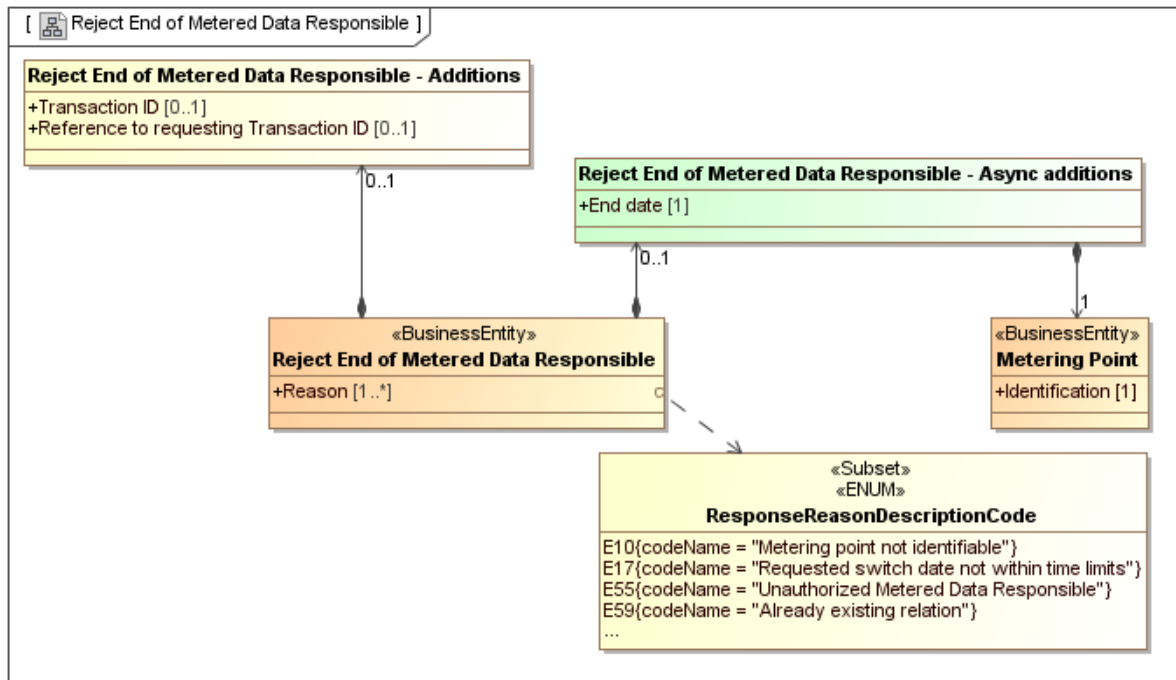


Figure 9 Reject End of Metered Data Responsible

Element definitions, Reject End of Metered Data Responsible	
<p><b>«Business entity»</b> Reject End of Metered Data Responsible</p>	The information set sent by the Metering Point Administrator the requesting Metered Data Responsible to reject this End of Metered Data Responsible.
Reason	One or more codes specifying the reason for the rejection of the requested End of Metered Data Responsible.
<p><b>«Business entity»</b> Metering Point</p>	An entity where energy products are measured or computed
Identification	The unique identification of the Metering Point the End of Metered Data Responsible is rejected for.
Reject End of Metered Data Responsible Additions	Information related to rejection of End of Metered Data Responsible, to be agreed on a national level.
Transaction ID	The unique identification of this set of information given by the Metering Point Administrator.
Reference to requesting Transaction ID	The Transaction ID from the request given by the requesting Metered Data Responsible.
Reject End of Metered Data Responsible Async Additions	Additional information, related to the End of Metered Data Responsible, needed when using asynchronous communication.
End date	The requested date, for this End of Metered Data Responsible, that is rejected.