



**Business Requirements for  
for**

**End of Supply**

**A process area within the European  
energy market structuring process**

Status: Approved by ebIX® Forum

Version: 3.2

Revision: A

Date: February 2014

CONTENT

- A. About this document..... 4
  - A.1. Comments to the ebIX® model ..... 4
  - A.2. References..... 4
    - A.2.1. Standards..... 4
    - A.2.2. ebIX® Documents ..... 4
  - A.3. Participants in the project ..... 5
  - A.4. Main changes since last version ..... 5
- 1. Business Requirements View: End of Supply ..... 7
  - 1.1. End of Supply (Business Process UseCase)..... 7
    - 1.1.1. Description ..... 7
    - 1.1.2. Business Process..... 8
    - 1.1.3. Request End of Supply..... 9
      - 1.1.3.1. Description ..... 9
      - 1.1.3.2. Business Process..... 10
    - 1.1.4. Notify End of Supply (Business Process UseCase)..... 11
      - 1.1.4.1. Description ..... 11
      - 1.1.4.2. Business Process..... 12
    - 1.1.5. Notify Metering Point Characteristics ..... 12
    - 1.1.6. Determine Meter Read ..... 12
  - 1.2. Business Partner View ..... 13
    - 1.2.1. Business Partners End of Supply ..... 13
  - 1.3. Business Entity View ..... 14
    - 1.3.1. Short introduction ..... 14
    - 1.3.2. Request End of Supply (Class Diagram)..... 15
      - 1.3.2.1. Request End of Supply (State Diagram) ..... 16
    - 1.3.3. Confirm End of Supply (Class Diagram) ..... 17

- 1.3.4. Reject End of Supply (Class Diagram) ..... 19
- 1.3.5. Notify End of Supply (Class Diagram) ..... 20
- 1.3.5.1. Notify End of Supply (State Diagram)..... 21

## A. About this document

This document is a business requirements specification for the End of Supply process within the structuring process of the European energy market.

As a general introduction ebIX® has published a separate document “Introduction to ebIX® Business Requirements and Business Information Models” [3]. The introduction also includes the generic model elements that are not specific for a particular business process.

In line with UN/CEFACT Modelling Methodology version 2 (UMM-2) ebIX® defines the business requirements before starting the actual modelling. These requirements have been specified by the ebIX® work group “Customer Switching (CuS)” and are the basis for the Business Information Model which is published in a separate document.

The Business Information Model is in turn the basis for the creation of XML schema’s and is expected to be the basis for the specification of web services in a next version of the model document. Since ebIX® supports both EDIFACT and XML the model will also serve as the basis for the creation of Message Implementation Guides for the mapping to EDIFACT UNSM’s. The Business Information Model and the syntax specific structures are specified by the ebIX® “Technical Committee” (ETC).

### A.1. Comments to the ebIX® model

If you have comments or suggestions to the requirements please contact any member of the project group or directly to Ove Nesvik (CuS secretary), [ove.nesvik@edisys.no](mailto:ove.nesvik@edisys.no).

### A.2. References

#### A.2.1. Standards

- [1] UML Profile for UN/CEFACT’s Modelling Methodology (UMM), Base Module 2.0.  
([http://www.unece.org/cefact/umm/umm\\_index.html](http://www.unece.org/cefact/umm/umm_index.html))
- [2] The Harmonized Role Model (for the Electricity Market) by ebIX®, ENTSO-E, and EFET  
([www.ebix.org](http://www.ebix.org))

#### A.2.2. ebIX® Documents

- [3] Introduction to ebIX® Business Requirements and Business Information Models  
([www.ebix.org](http://www.ebix.org))
- [4] Recommended Identification Schemes for the European Energy Market ([www.ebix.org](http://www.ebix.org))
- [5] ebIX® Business Requirements for metered data ([www.ebix.org](http://www.ebix.org))
- [6] ebIX® Business Requirements for Notify Metering Point Characteristics ([www.ebix.org](http://www.ebix.org))
- [7] ebIX® code lists ([www.ebix.org](http://www.ebix.org))

### A.3. Participants in the project

These Business Requirements as part of the ebIX® Model for the European Energy Market (see [3]) are made in a project with the members of CuS. For a list of members of CuS see [www.ebix.org](http://www.ebix.org) .

### A.4. Main changes since last version

Old	New	Clarification	Date
<b>Draft version 3.1.B</b>			
	Addition of data element definitions	Update of references and textual corrections	20110620
	Data element definitions and introduction	Updated after CuS meeting August 2012	20121012
	General corrections, e.g. text alignment between CuS BRVs	Updated after CuS meeting December 2012	20130115
	General corrections, e.g. text alignment between CuS BRVs	Updated after CuS meeting February 2013	20130603
	General corrections, e.g. text alignment between CuS BRVs	<ul style="list-style-type: none"> <li>• Added a reference to “ebIX® Code lists</li> <li>• Added page shift for level one and two.</li> <li>• Removed actors from the top level UseCase</li> <li>• Renamed Grid User to Grid Customer</li> <li>• Renamed Initiating Role and Requesting Role to Initiator</li> <li>• Renamed Linked Role to Linked Party</li> <li>• Added stereotypes to enumerations</li> <li>• Add separate chapters for UseCases described in external BRV’s</li> <li>• Document names in Upper Camel Case</li> <li>• Rephrased endsWhen and beginsWhen in UseCase Descriptions</li> <li>• Updated links to UN/CEFACT documents</li> <li>• Rephrased post condition text in the top level UseCases</li> <li>• Responding document states are made explicit</li> <li>• State machines are update</li> </ul>	20130921

		<ul style="list-style-type: none"> <li>• In the “Business processes” (Activity diagrams), the end (“Success”) is moved to the recipients swimlane</li> <li>• Customer, Grid Customer and Supply Customer are used consistent</li> <li>• Reference links are shown in brackets</li> <li>• «<b>Business entity</b>» is added where missing</li> </ul> <p>New classes are added for generic entities, such as MP and Meter</p>	
	General corrections, e.g. spelling errors		20140223
<b>Version 3.1.A</b>			
		First approved version 3.1	20110818
		Correction of Figure 1 Request End of Supply, i.e. addition of Metered Data Responsible	20120515

# 1. Business Requirements View: End of Supply

## 1.1. End of Supply (Business Process UseCase)

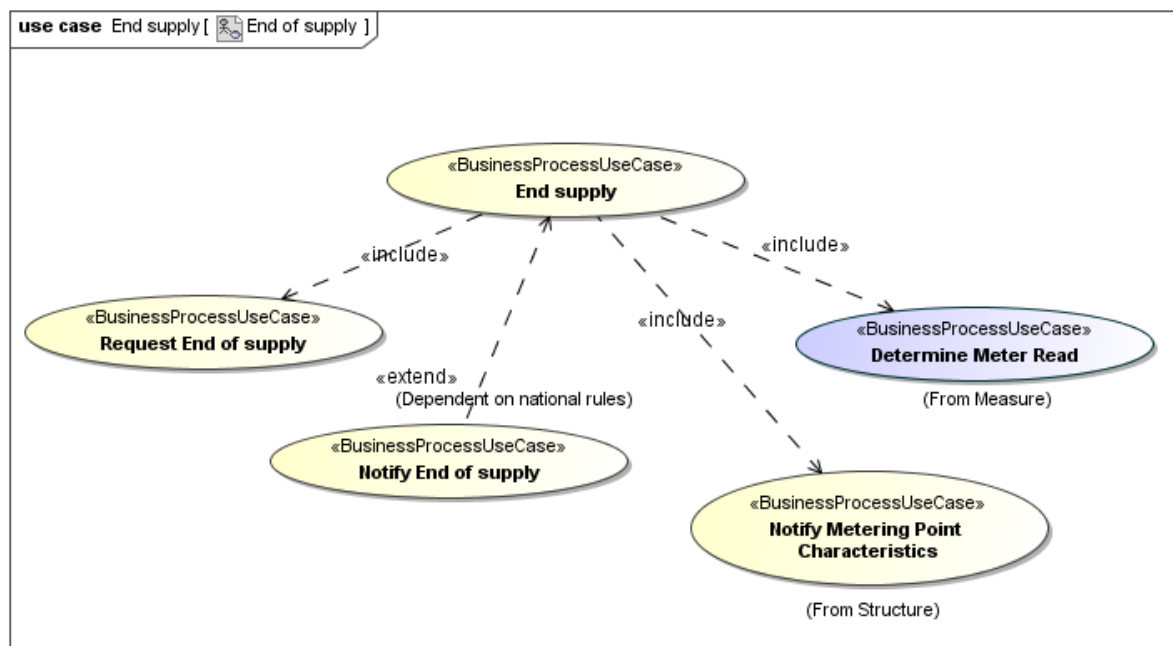


Figure 2 End of Supply

### 1.1.1. Description

UseCase description: End of Supply	
definition	<p>This is a process where the <i>Balance Supplier</i> requests End of Supply to be registered by a given date at the <i>Metering Point</i> in the <i>Metering Point register</i></p> <p>The <i>Metering Point Administrator</i> makes all necessary updates for the End of Supply, including distribution of master data for alignment of the business partner data bases</p>
beginsWhen	When the <i>Balance Supplier</i> sends a Request End of Supply to the <i>Metering Point Administrator</i>
preCondition	<p>The <i>Balance Supplier</i> has notified the <i>Customer</i> that the contract between them will be ended and the End of Supply process will be initiated</p> <p>The end process should be within the rules of the legislation</p>
endsWhen	<p>When the Request End of Supply has been confirmed or rejected</p> <p>If confirmed;</p> <ul style="list-style-type: none"> <li>• Relevant parties have been informed about the end.</li> <li>• Master data have been distributed to relevant parties.</li> <li>• End meter reading has been determined.</li> </ul>

postCondition	The <i>Balance Responsible Party</i> has given notice to terminate the contract with the <i>Customer</i> and all involved parties have exchanged and synchronised their master data with the Metering Point register, or (in case of rejection) nothing is changed in the Metering Point register
exceptions	<p>Dependent on national rules, the End of Supply process and the processes triggered by the End of Supply process (see below) may stop if a Request Change of Supplier or Move In process is started before the confirmed End of Supply date</p> <p>The End of Supply process may trigger other processes, based on national rules:</p> <ul style="list-style-type: none"> <li>• Change of <i>Administrative status of Metering Point</i>; to be set to inactive.</li> <li>• Change to supplier of last resort or default supplier.</li> <li>• Physical closure of the Metering Point.</li> </ul>
actions	See 1.1.2

### 1.1.2. Business Process

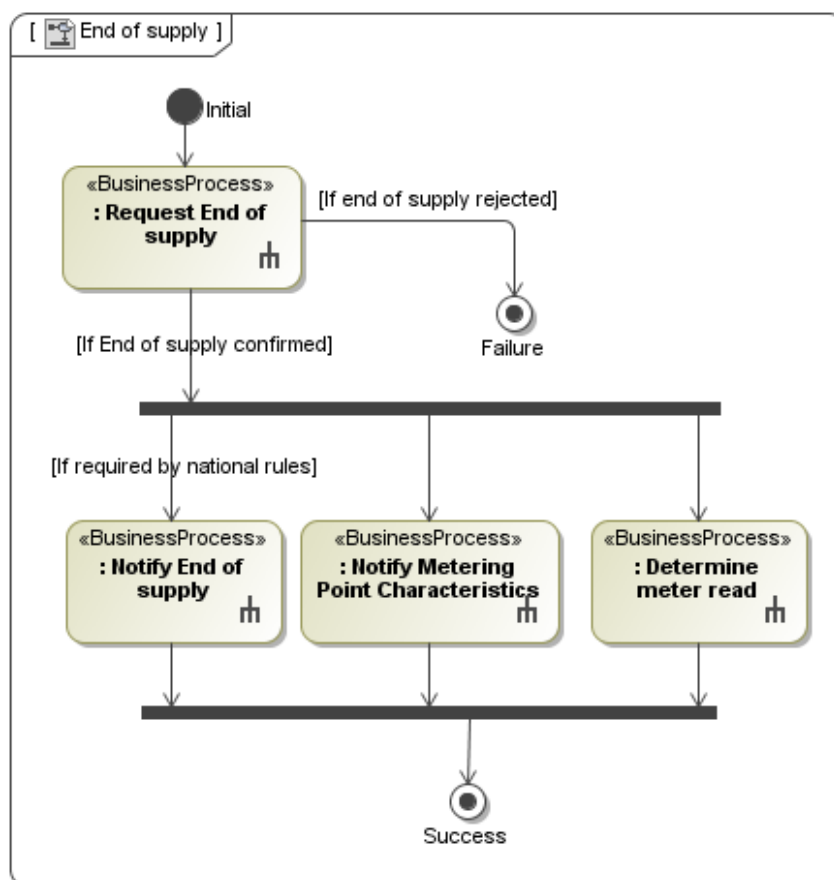


Figure 3 Business Process: End of Supply



### 1.1.3. Request End of Supply

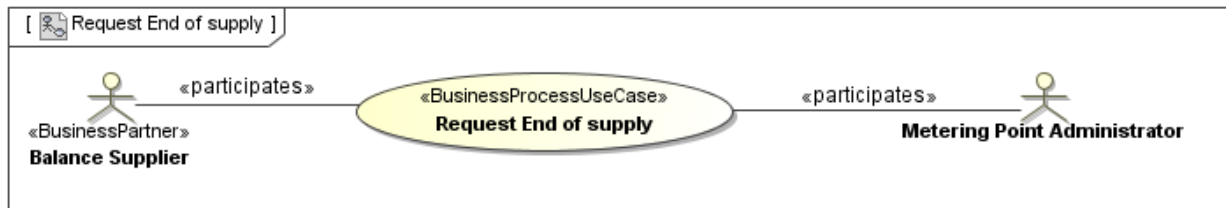


Figure 4 Request End of Supply

#### 1.1.3.1. Description

UseCase description: Request End of Supply	
definition	<p>In this process, the <i>Balance Supplier</i> will request an End of Supply and the <i>Metering Point Administrator</i> confirms or rejects it</p> <p>During the business process, an End of Supply is confirmed and the Metering Point register is updated, or the End of Supply is rejected</p> <p>In this model, it is assumed that the Metering Point Administrator cannot change the end date in the confirmation</p>
beginsWhen	When the <i>Balance Supplier</i> sends a Request End of Supply
preCondition	<ul style="list-style-type: none"> <li>• Metering Point ID is known</li> <li>• Existing supply contract is in place</li> <li>• An End of Supply date has been decided by the <i>Balance Supplier</i></li> </ul>
endsWhen	When the Request End of Supply is confirmed or rejected
postCondition	The Request End of Supply, from the <i>Balance Supplier</i> , has been confirmed or rejected by the <i>Metering Point Administrator</i>
exceptions	None
actions	See 1.1.3.2

### 1.1.3.2. Business Process

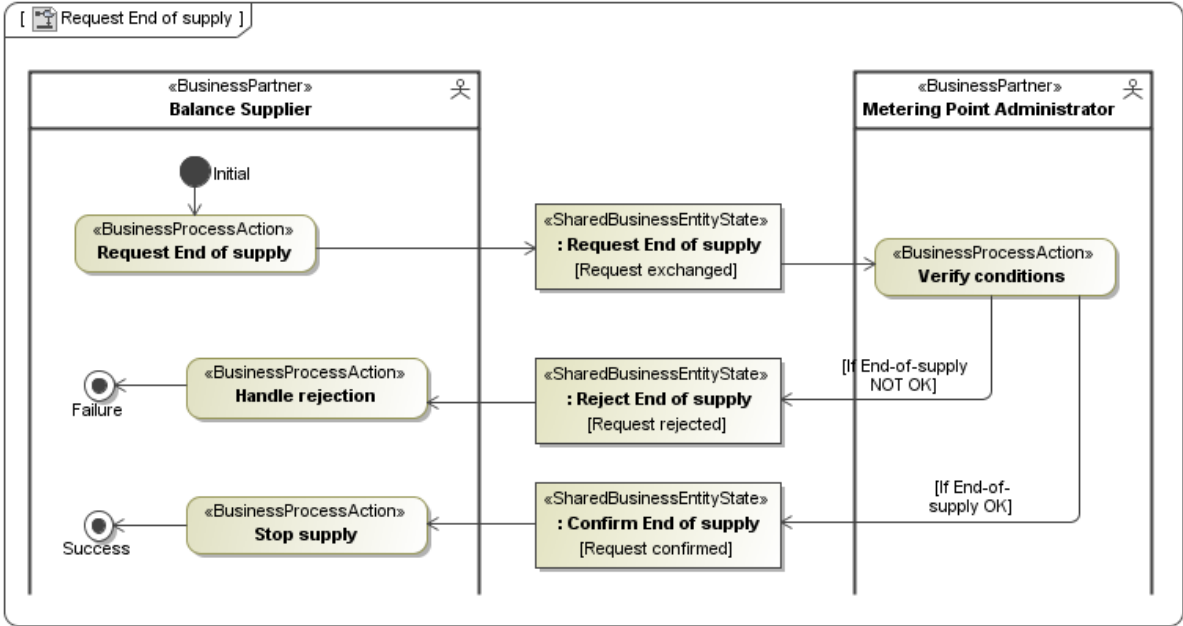


Figure 5 Request End of Supply

### 1.1.4. Notify End of Supply (Business Process UseCase)

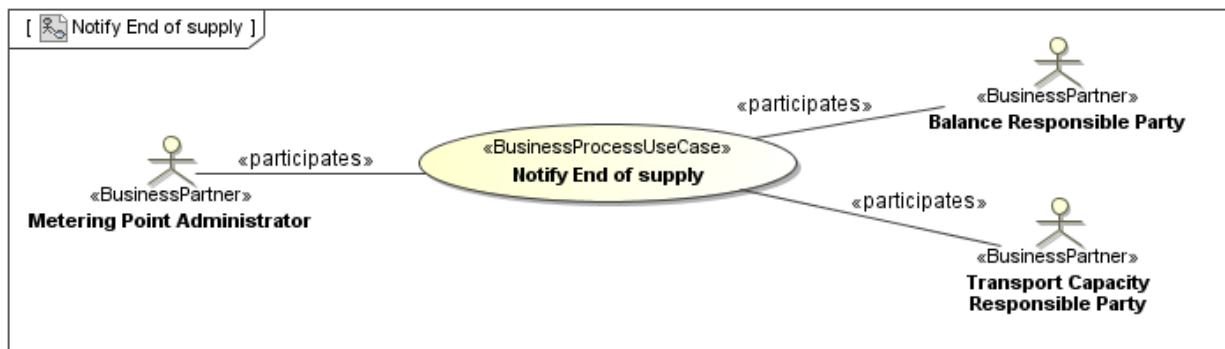


Figure 6 Notify End of Supply

#### 1.1.4.1. Description

UseCase description: Notify End of Supply	
definition	In this process the <i>Metering Point Administrator</i> will notify the <i>Balance Responsible Party</i> or the <i>Transport Capacity Responsible Party</i> of the End of Supply in the Metering Point and the related end date
beginsWhen	When the End of Supply has been confirmed by the <i>Metering Point Administrator</i> , however defined by national rules
preCondition	<ul style="list-style-type: none"> <li>The related Request End of Supply process has been confirmed</li> <li>The Metering Point register has been updated with the End of Supply</li> </ul>
endsWhen	When the <i>Balance Responsible Party</i> or the <i>Transport Capacity Responsible Party</i> has been informed of the End of Supply in the Metering Point and the related end date
postCondition	The End of Supply has been notified from the <i>Metering Point Administrator</i> to the <i>Balance Responsible Party</i> or the <i>Transport Capacity Responsible Party</i>
exceptions	The process is only run if required by national rules
actions	See 1.1.4.2

### 1.1.4.2. Business Process

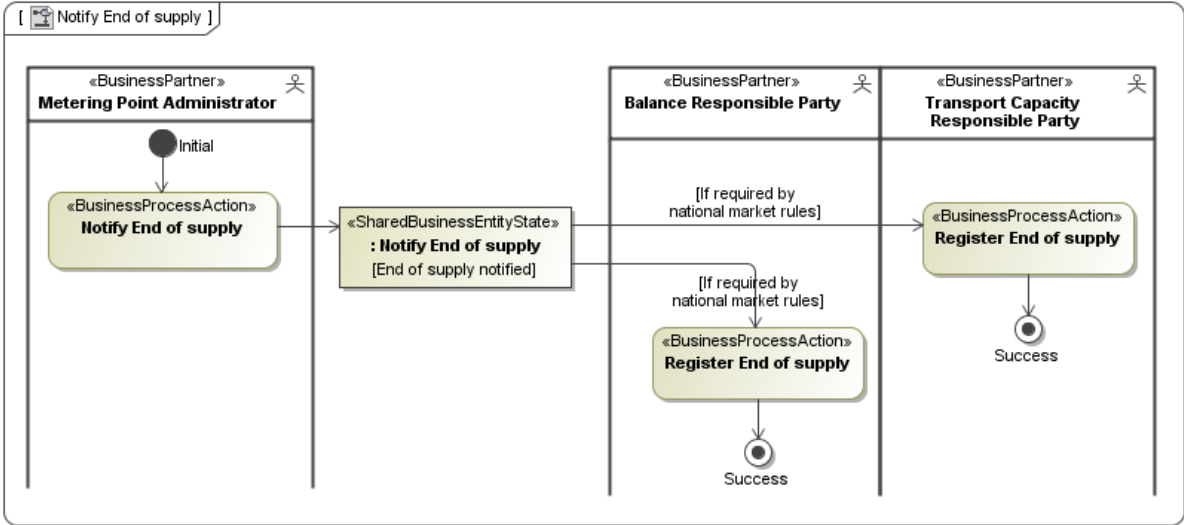


Figure 7 Notify End of Supply

### 1.1.5. Notify Metering Point Characteristics

Notify Metering Point Characteristics is documented in a separate document, see [6]. In this document, the "Linked parties" are specified.

### 1.1.6. Determine Meter Read

The Process area Determine Meter Read is documented in the ebIX® model Measure [5].

## 1.2. Business Partner View

### 1.2.1. Business Partners End of Supply

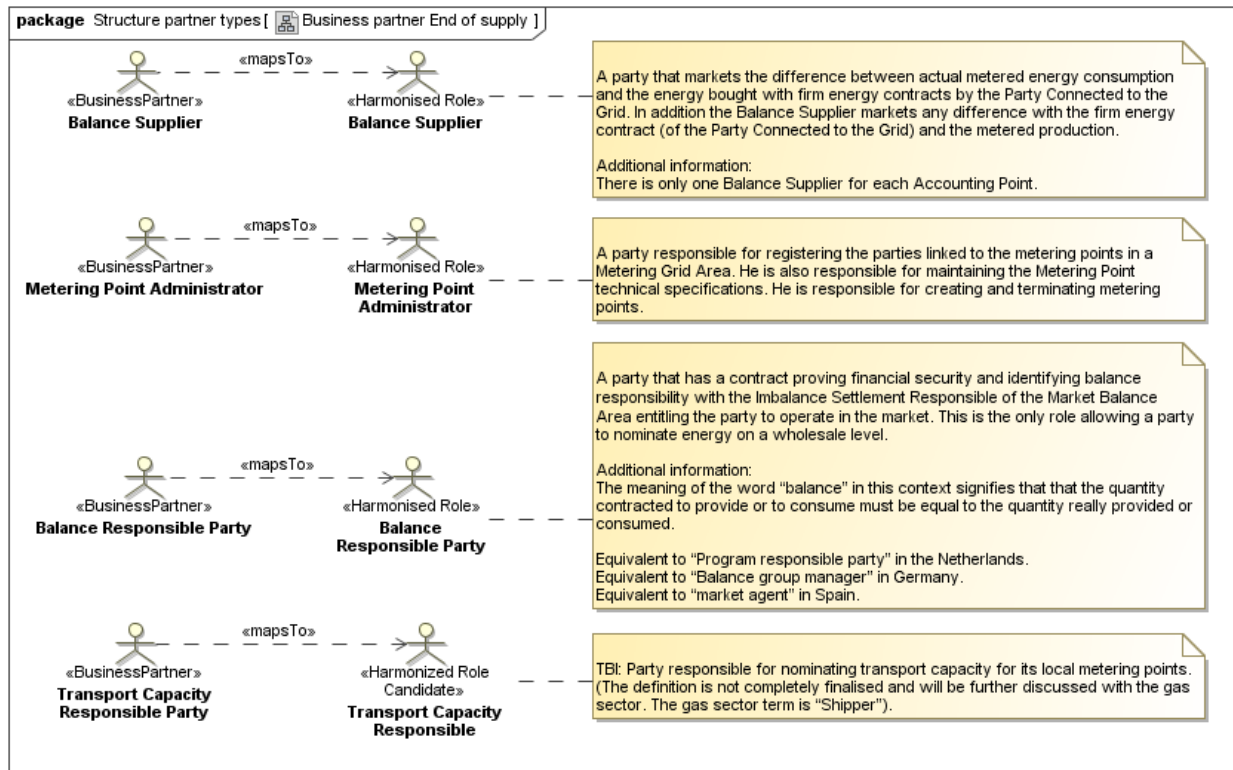


Figure 8 Business Partner End of Supply

## 1.3. Business Entity View

### 1.3.1. Short introduction

In these business requirements the ebIX® work group CuS has for the first time used the principle of specifying the core data set as business requirements. This core data set is defined as the set of information that is required when using synchronous web services as the exchange mechanism.

The information required for a-synchronous web services is added as an option.

Finally, optional information is specified.

For exchange as a stand-alone document header and context information will have to be added. But this is not regarded as a business requirement when defining the core data set, but as a requirement for technical implementation or mapping to syntax.

It is important to note that it is assumed for defining the core data set, that Metering Points are uniquely dedicated to either electricity or to gas. As a consequence the specification of the business sector is not part of core data set anymore.

### 1.3.2. Request End of Supply (Class Diagram)

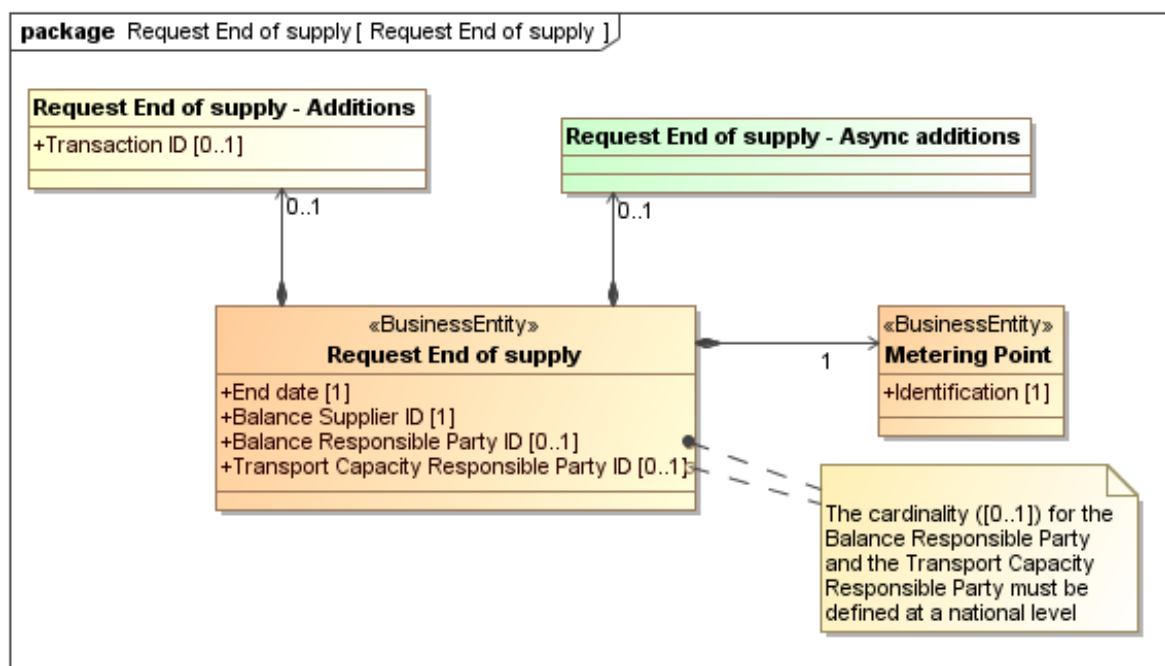


Figure 9 Request End of Supply

Element definitions, Request End of Supply	
«Business entity» Request End of Supply	The information set sent by a Balance Supplier to the Metering Point Administrator when requesting End of Supply.
End date	The date from when the Balance Supplier requests to end supply for this Metering Point.
Balance Supplier ID	The unique identification of the requesting Balance Supplier.
Balance Responsible Party ID	The unique identification of the Balance Responsible Party that no longer will be balance responsible for this Metering Point.
Transport Capacity Responsible Party ID	The unique identification of the Transport Capacity Responsible Party that no longer will be transport capacity responsible for this Metering Point.
«Business entity» Metering Point	An entity where energy products are measured or computed
Identification	The unique identification of the Metering Point the End of Supply is intended for.
Request End of Supply Additions	Additional information related to Request End of Supply, to be agreed on a national level.
Transaction ID	The unique identification of this set of information given by the requesting Balance Supplier.
Request End of Supply Async Additions	Additional information related to End of Supply, needed when using asynchronous communication, however not used in this request.

1.3.2.1. Request End of Supply (State Diagram)

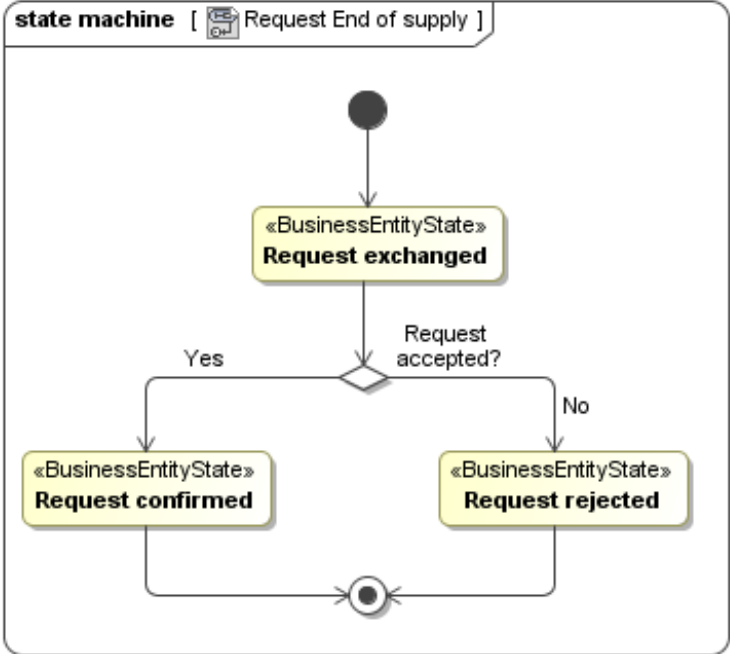


Figure 10 Request End of Supply



### 1.3.3. Confirm End of Supply (Class Diagram)

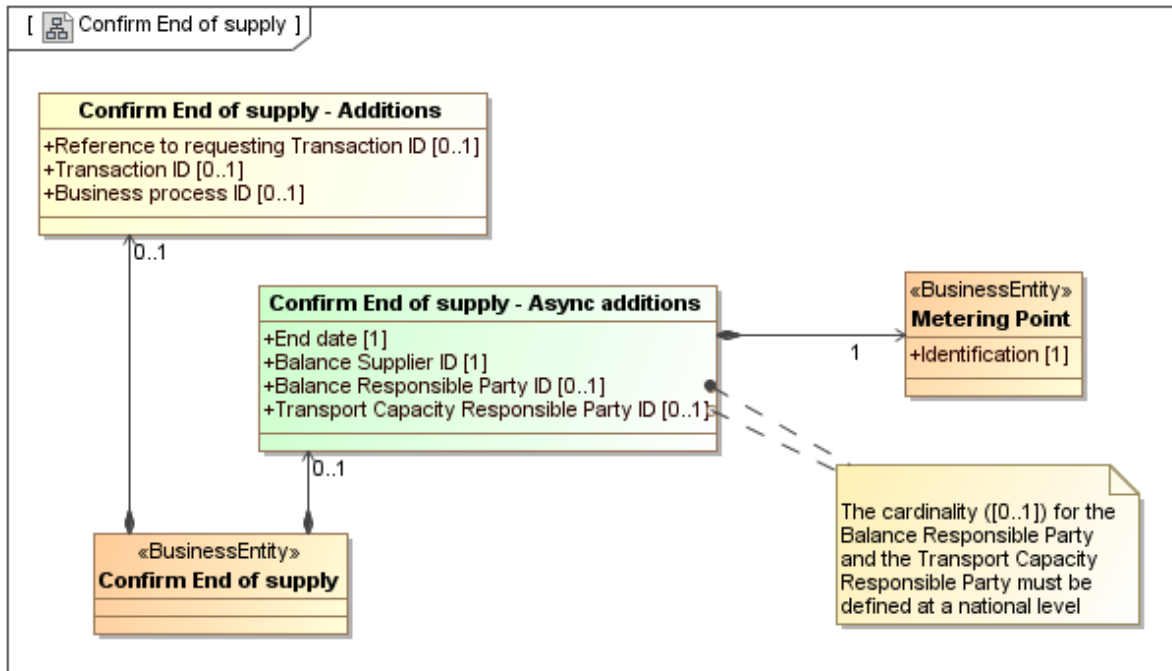


Figure 11 Confirm End of Supply

Element definitions, Confirm End of Supply	
«Business entity» Confirm End of Supply	The information set sent by the Metering Point Administrator to the requesting Balance Supplier to confirm End of Supply.
«Business entity» Metering Point	An entity where energy products are measured or computed
Identification	The unique identification of the Metering Point this End of Supply is confirmed for.
Confirm End of Supply	Information related to Confirm End of Supply, to be agreed on a national level.
Transaction ID	The unique identification of this set of information given by the Metering Point Administrator.
Reference to requesting Transaction ID	The Transaction ID from the request given by the requesting Balance Supplier.
Business process ID	The unique identification, given by the Metering Point Administrator, of this Requested End of Supply process that this response is a part of.
Confirm End of Supply Async Additions	Information related to the Confirm End of Supply, needed when using an asynchronous communication.
End date	The date from when the Balance Supplier no longer is supplying this Metering Point.
Balance Supplier ID	The unique identification of the Balance Supplier ending its supply that no longer will be supplying the Metering Point.

---

Balance Responsible Party ID	The unique identification of the Balance Responsible Party that no longer will be balance responsible for this Metering Point.
Transport Capacity Responsible Party ID	The unique identification of the Transport Capacity Responsible Party that no longer will be transport capacity responsible for this Metering Point.

### 1.3.4. Reject End of Supply (Class Diagram)

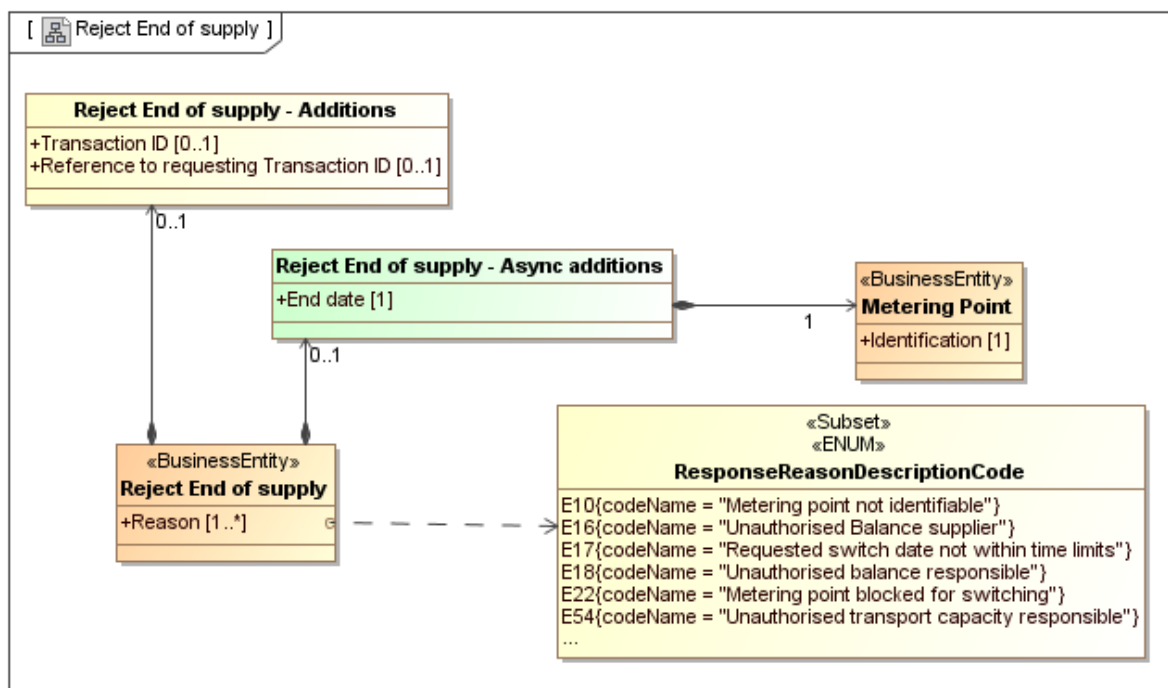


Figure 12 Reject End of Supply

Element definitions, Reject End of Supply	
«Business entity» Reject End of Supply	The information set sent by the Metering Point Administrator to the requesting Balance Supplier to reject this End of Supply.
Reason	One or more codes specifying the reason for the rejection of the requested End of Supply.
«Business entity» Metering Point	An entity where energy products are measured or computed
Identification	The unique identification of the Metering Point the End of Supply is rejected for.
Reject End of Supply Additions	Information related to rejection of End of Supply, to be agreed on a national level.
Transaction ID	The unique identification of this set of information given by the Metering Point Administrator.
Reference to requesting Transaction ID	The Transaction ID from the request given by the requesting Balance Supplier.
Reject End of Supply Async Additions	Additional information, related to the End of Supply, needed when using asynchronous communication.
End date	The requested date for this End of Supply that is rejected.

### 1.3.5. Notify End of Supply (Class Diagram)

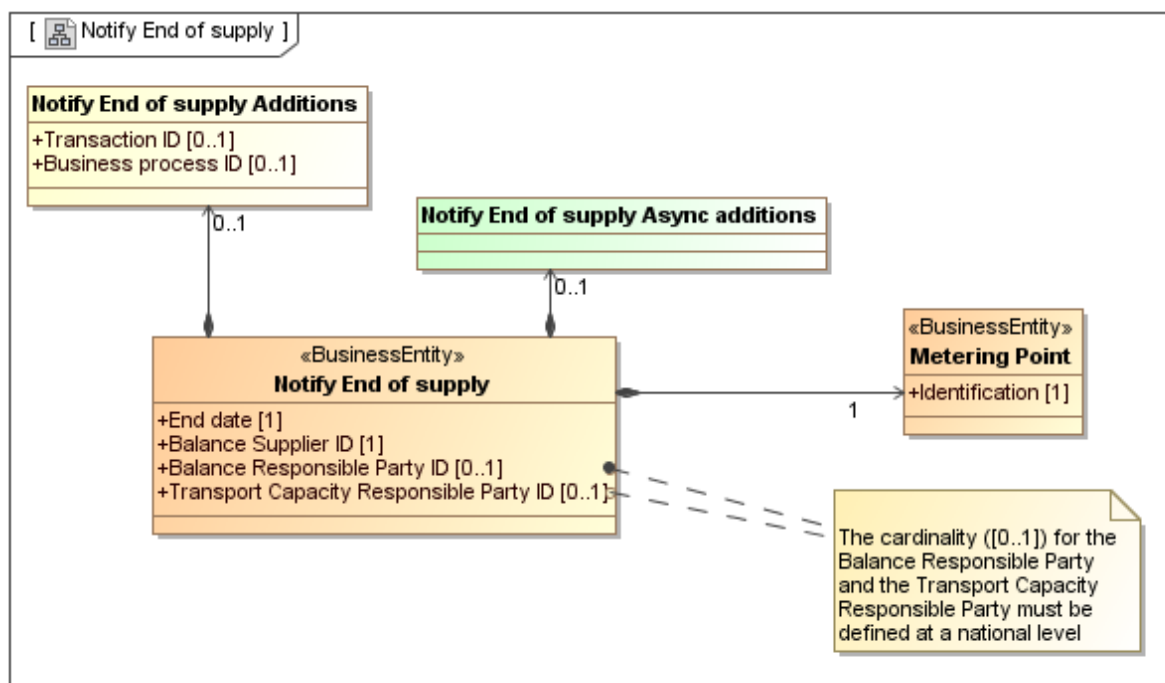


Figure 13 Notify End of Supply

Element definitions, Notify End of Supply	
«Business entity» Notify End of Supply	The information set, sent by the Metering Point Administrator, when notifying End of Supply to Balance Responsible Party and/or Transport Capacity Responsible Party.
End date	The date from when the Old Balance Responsible Party and the Old Transport Capacity Responsible Party no longer has any responsibility for this Metering Point.
Balance Supplier ID	The unique identification of the Balance Supplier that no longer is supplying this Metering Point.
Balance Responsible Party ID	The unique identification of the Balance Responsible Party that no longer will be balance responsible for this Metering Point
Transport Capacity Responsible Party ID	The unique identification of the Transport Capacity Responsible Party that no longer will be transport capacity responsible for this Metering Point
«Business entity» Metering Point	An entity where energy products are measured or computed
Identification	The unique identification of the Metering Point this End of Supply is notified for.
Notify End of Supply Additions	Additional information, related to the notification of End of Supply, to Balance Responsible Party and/or Transport Capacity Responsible Party, to be agreed on a national level.

Transaction ID	The unique identification of this set of information given by the Metering Point Administrator.
Business process ID	The unique identification, given by the Metering Point Administrator, of this End of Supply process that this notification is a part of.
Notify End of Supply Async Additions	Additional information, related to the Notify End of Supply, to Balance Responsible Party and/or Transport Capacity Responsible Party.

**1.3.5.1. Notify End of Supply (State Diagram)**

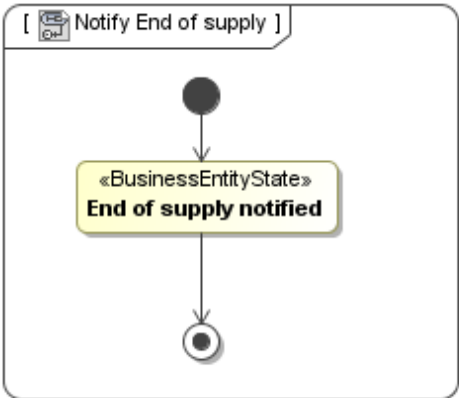


Figure 14 Notify End of Supply