



# **Business Requirements for Customer move**

Status: Approved by ebIX® Forum  
Version: 4.0  
Revision: B  
Date: February 2022

## CONTENT

A.	About this document.....	5
A.1.	Comments to the ebIX® model .....	5
A.2.	References.....	5
A.2.1.	Standards.....	5
A.2.2.	ebIX® Documents .....	5
A.3.	Main changes since last version .....	6
1	Overview of Customer move.....	7
2	Business Domain View: Customer move in (Business Process UseCase).....	9
2.1	Description .....	9
2.2	Business Process.....	11
2.3	Make supply contract.....	11
2.4	Request Customer move in (Business Process UseCase).....	12
2.4.1	Description .....	12
2.4.2	Business Process.....	13
2.5	Notify Customer move in (Business Process UseCase) .....	14
2.5.1	Description .....	14
2.5.2	Business Process.....	15
2.6	Notify forced Customer move out (Business Process UseCase) .....	16
2.6.1	Description .....	16
2.6.2	Business Process.....	17
2.7	Notify Accounting Point characteristics .....	17
2.8	Determine meter read .....	18
3	Business Domain View: Customer move out (Business Process UseCase) .....	19
3.1	Description .....	19
3.2	Business Process.....	20
3.3	Request Customer move out.....	21

3.3.1	Description .....	21
3.3.2	Business Process.....	22
3.4	Notify move out (Business Process UseCase) .....	23
3.4.1	Description .....	23
3.4.2	Business Process.....	24
3.5	Notify Accounting Point characteristics .....	24
3.6	Determine meter reading.....	24
4	Business Partner View: Customer move .....	25
5	Business Entity View: Customer move .....	26
5.1	Request Customer move in (Class Diagram) .....	27
5.1.1	Element definitions: Request Customer move in.....	27
5.2	Confirm request Customer move in (Class Diagram) .....	28
5.2.1	Element definitions: Confirm request Customer move in .....	28
5.3	Reject request Customer move in (Class Diagram) .....	29
5.3.1	Element definitions: Reject request Customer move in .....	29
5.4	Notify Customer move in to New Affected Party (Class Diagram).....	30
5.4.1	Element definitions: Notify Customer move in to New Affected Party .....	30
5.5	Notify Customer move in to Old Affected Party (Class Diagram) .....	32
5.5.1	Element definitions: Notify Customer move-in to Old Affected Party.....	32
5.6	Request Customer move out (Class Diagram).....	34
5.6.1	Element definitions: Request Customer move out .....	34
5.7	Confirm request Customer move out (Class Diagram) .....	35
5.7.1	Element definitions: Confirm request Customer move out .....	35
5.8	Reject request Customer move out (Class Diagram) .....	37
5.8.1	Element definitions: Reject request Customer move out.....	37
5.9	Notify Customer move out (Class Diagram) .....	38
5.9.1	Element definitions: Notify Customer move out .....	38

Appendix A. Header and Context information for the class diagrams .....	40
A.1. Header and Context Information attributes definitions .....	40
A.2. Request Customer move in .....	40
A.3. Confirm request Customer move in .....	41
A.4. Reject request Customer move in .....	41
A.5. Notify Customer move in to New Affected Party .....	42
A.6. Notify Customer move in to Old Affected Party .....	42
A.7. Request Customer move out .....	43
A.8. Confirm request Customer move out .....	43
A.9. Reject request Customer move out .....	44
A.10. Notify Customer move out .....	44

## A. About this document

This document is a Business Requirements Specification (BRS) for Customer move process within the structuring process of the European energy market. In this BRS we use business terms for the actors, and we map them to the terms used in the Harmonised Role Model from ENTSO-E, ebIX® and EFET [2].

As a general introduction ebIX® has published a separate document “Introduction to ebIX® Business Requirements and Business Information Models” [3]. The introduction also includes the generic model elements that are not specific for a business process.

In line with UN/CEFACT Modelling Methodology version 2 (UMM-2) ebIX® defines the business requirements as the first step in modelling energy market processes. This document specifies an UMM Business Requirements View, which consist of the three sub views: Business Domain View, Business Partner View and Business Entity View.

The Business Information Model is in turn the basis for the creation of XML schema's and is the basis for the specification of web services. The Business Information Model and the syntax specific structures are specified by the “ebIX® Technical Committee” (ETC).

Since the ebIX® model is open for national customisation, some attributes are added as optional for usage for regional/national customisation. If used, these attributes must be specified nationally.

### A.1. Comments to the ebIX® model

These Business Requirements, as part of the ebIX® Model for the European Energy Market (see [3]), are made in a project with the members of EBG, see [www.ebix.org](http://www.ebix.org). For comments to the document please contact the [secretary@ebix.org](mailto:secretary@ebix.org).

## A.2. References

### A.2.1. Standards

- [1] UML Profile for UN/CEFACT's Modelling Methodology (UMM), Base Module 2.0., (<http://www.unece.org/tradewelcome/un-centre-for-trade-facilitation-and-e-business-uncfact/outputs/technical-specifications/uncfact-modelling-methodology-umm.html>).
- [2] The Harmonized Role Model (for the Electricity Market) by ebIX®, ENTSO-E, and EFET ([www.ebix.org](http://www.ebix.org)).

### A.2.2. ebIX® Documents

- [3] Introduction to ebIX® Business Requirements and Business Information Models ([www.ebix.org](http://www.ebix.org)).
- [4] Recommended Identification Schemes for the European Energy Market ([www.ebix.org](http://www.ebix.org)).

- [5] ebIX® code lists ([www.ebix.org](http://www.ebix.org)).
- [6] ebIX® Business Requirements for measure for determine meter read ([www.ebix.org](http://www.ebix.org)).
- [7] ebIX® Business Requirements for Alignment of Accounting Point characteristics ([www.ebix.org](http://www.ebix.org)).
- [8] ebIX® Business Requirements for Change of Supplier ([www.ebix.org](http://www.ebix.org)).
- [9] EBG Survey - How to handle a gap between Move Out and Move In ([www.ebix.org](http://www.ebix.org)).

### A.3. Main changes since last version

Old	New	Clarification	Date
<b>Version 4.0</b>			
3.3.C	4.0A	Recast of BRS.	20200223
4.0.A	4.0B	<ul style="list-style-type: none"> <li>Cardinality for Reference to requesting Transaction ID is set to [1].</li> <li>Addition of clarifying text to chapter “A. About this document”.</li> <li>Update of role definitions to Harmonised Electricity Market Role Model (HEMRM) version 2022-01.</li> <li>Correction of spelling errors.</li> <li>Addition of Flexibility Register Administrator to UseCase “Notify Customer move out”, UseCase “Notify forced Customer move out” and the Business Partner View.</li> </ul>	20220215

**Table 1** Main changes since last version

## 1 Overview of Customer move

The ebIX® model for structuring in the European energy market is a supplier centric model and the Customer shall always contact the Energy Supplier and no other roles, like the Grid Company (in the role of Grid Access Provider) or the Metering Point Administrator.

The customer move is in general a complex process that potentially involves several parties, depending on the point of view. In most cases a customer moves in a new Accounting Point and virtually at the same time moves out of an old Accounting Point. In this process, the Customer can choose to have a new Energy Supplier and other servicing companies. Looking at one of the Accounting Points the situation usually is that one Customer moves out and more or less at the same time another Customer moves in<sup>1</sup>. They both can bring different service providers. It is common that in the market processes the Energy Supplier takes the lead and triggers the different processes as move in or move out.

There may be more roles (types) of Customers, such as the Customer having the contract for grid access, the supply contract, and the metering contract. However, the only Customer needed in data exchange related to the customer move process is the Customer having the grid access contract, where the Energy Supplier has the Customer for the energy supply contract.

The easiest way to handle Customer moves, seen from a data exchange point of view, is through the business process Customer move in. This process will trigger all necessary sub-processes to fulfil the move related to the relevant Accounting Point, i.e. both the Customer move in and the Customer move out process. However, it is impossible to deny the Customer, which is moving out, the possibility to end his/her supply to the Accounting Point. For this reason, the ebIX® model includes both processes.

If a Customer move in and move out process are run in parallel for the same Accounting Point, the following rules are recommended:

Scenario		Alternatives	Action
1	Requested move out date is before requested move in date	Request move in received after confirmation of move out	Both processes are run as separate processes (move in and move out)
		Request move out received after confirmation of move in	The move out process is run as normal.  The consequence is that the document "Notify Customer move in to Old Energy Supplier, Old Balance Responsible Party and/or Old Shipper" (see 5.5) is effectively overruled.

<sup>1</sup> If the time between Move Out and Move In is a longer period, there is no common way of handling this in Europe, see [9].

2	Requested move out date is after requested move in date	Request move in received after confirmation of move out	The Customer move out process is stopped, and the Customer move in process takes over the remaining actions from the Customer move out process, including move out for the requested move in date
		Request move out received after confirmation of move in	Reject the request for Customer move out. The Customer move in processes is already running and will handle the move out
3	Requested move out date is on the same date as requested move in	Request move in received after confirmation of move out	Choose between scenario 1 or 2
		Request move out received after confirmation of move in	Reject the request for Customer move out. The Customer move in processes is already running and will handle the move out

**Table 2** Advised rules for parallel Customer move in and move out processes



## 2 Business Domain View: Customer move in (Business Process UseCase)

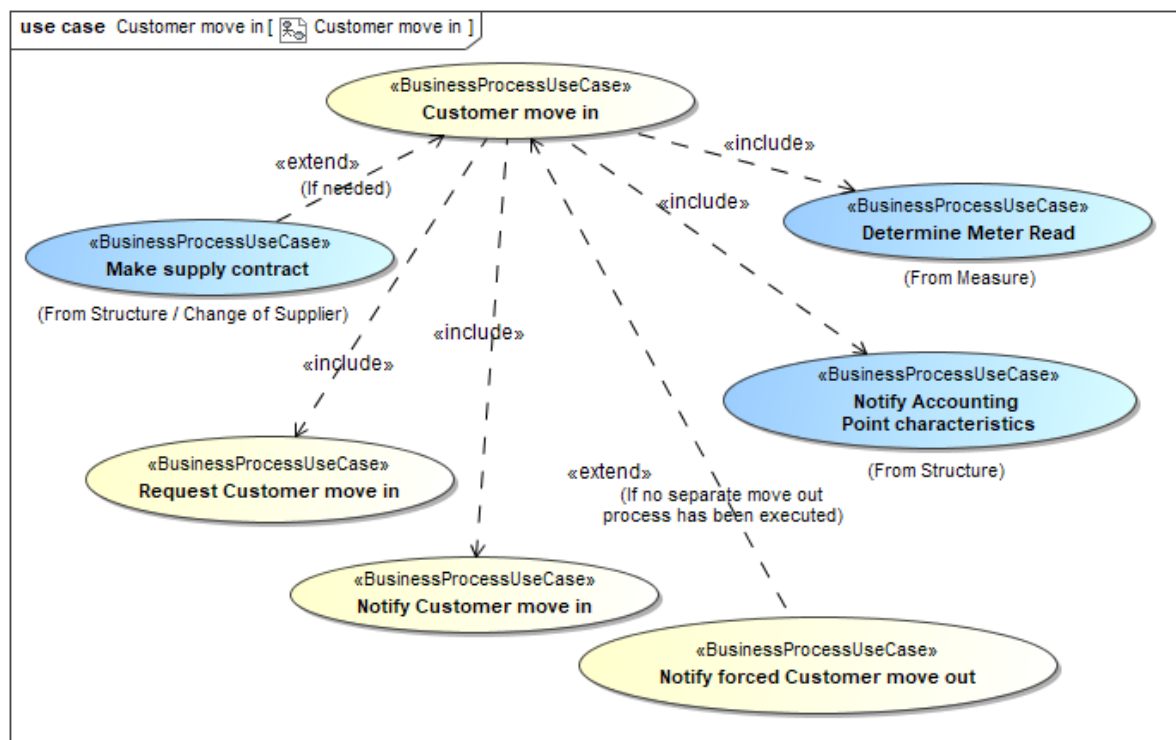


Figure 1 Business Process UseCase: Customer move in

### 2.1 scription

UseCase description: Customer move in	
definition	<p>In this process, all necessary sub-processes will be fulfilled to move a new Customer into an Accounting Point, i.e. being responsible for the energy consumption at or energy infeed from the Accounting Point. The process includes update of the Energy Supplier, Balance Responsible Party and/or Shipper, in the Metering Point administration. The New Balance Responsible Party or New Shipper will be notified of the Customer move in. As a consequence of the move in, the former Customer will be forced to move out (if not already done in a separate move out process), and the Old Energy Supplier, the Consent Administrator, and if needed the Old Balance Responsible Party or Old Shipper, will be notified.</p> <p>The process may include making, or adjusting, a supply contract (which may include making a new grid access contract).</p> <p>Further, all Linked Parties will get updated Accounting Point characteristics.</p> <p>Finally, there must be a meter read for the move.</p>

beginsWhen	When the New Energy Supplier sends a request for “Customer move in” to the Metering Point Administrator.
preCondition	<p>The new Customer has no existing relation to the Accounting Point.</p> <p>The New Energy Supplier has all necessary information and consent(s) to start the move in process.</p> <p>Dependent on national rules:</p> <ul style="list-style-type: none"> <li>• Grid access contract exists</li> <li>• Metering contract exists</li> <li>• Supply contract exists</li> </ul>
endsWhen	When the move in has been confirmed and Accounting Point characteristics have been notified to all Linked Parties and a meter read has been determined for the move in.
postCondition	<p>The new Customer and Energy Supplier are responsible for supply at the Accounting Point and all Linked Parties are informed.</p> <p>When applicable the final account can be settled with the old Customer.</p>
exceptions	The move in process has been rejected by the Metering Point Administrator.
actions	See 2.2

**Table 3** UseCase description: Customer move in

## 2.2 Business Process

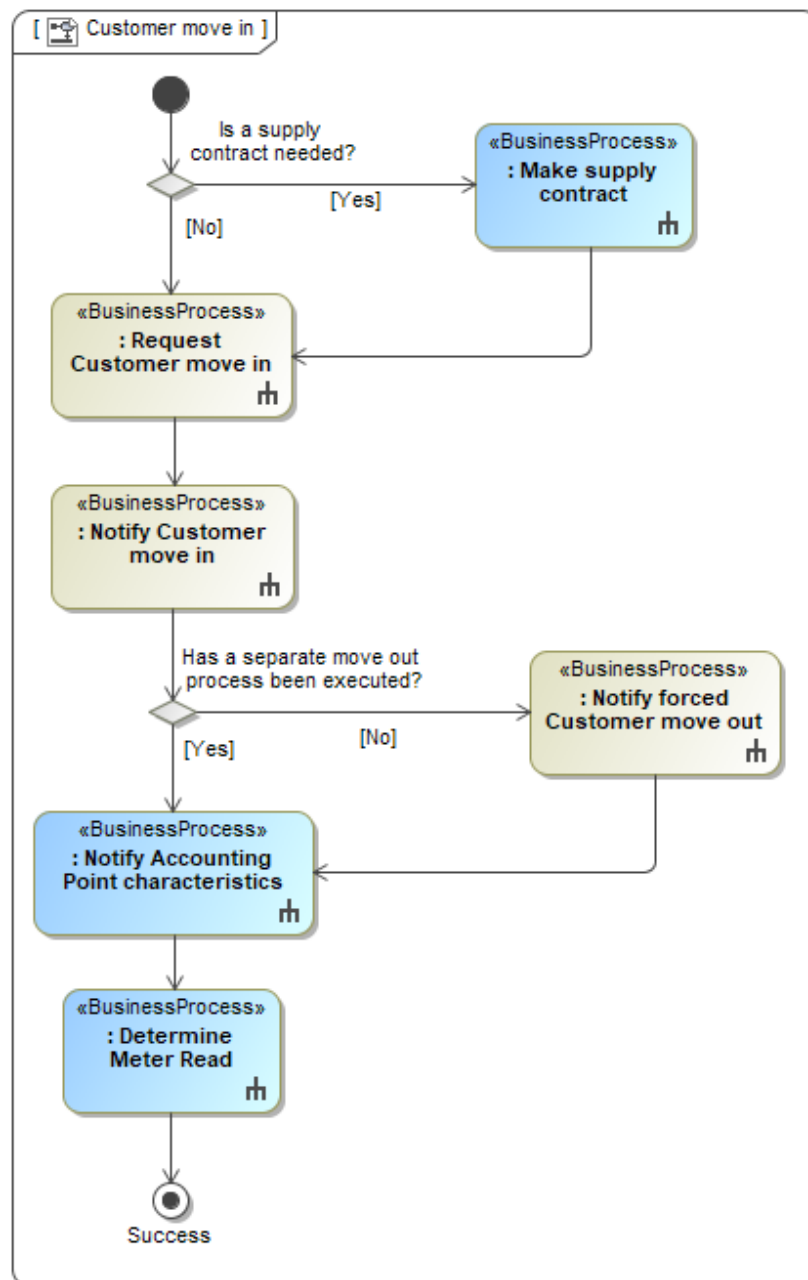


Figure 2 Business Process: Customer move in

## 2.3 Make supply contract

Before moving in, the Energy Supplier may have to make a supply contract and make sure there is a grid access contract between the Grid Access Provider and the Customer for the Accounting Point. The Process Make supply contract is documented in the ebIX® BRS for Change of Supplier [8].

## 2.4 Request Customer move in (Business Process UseCase)

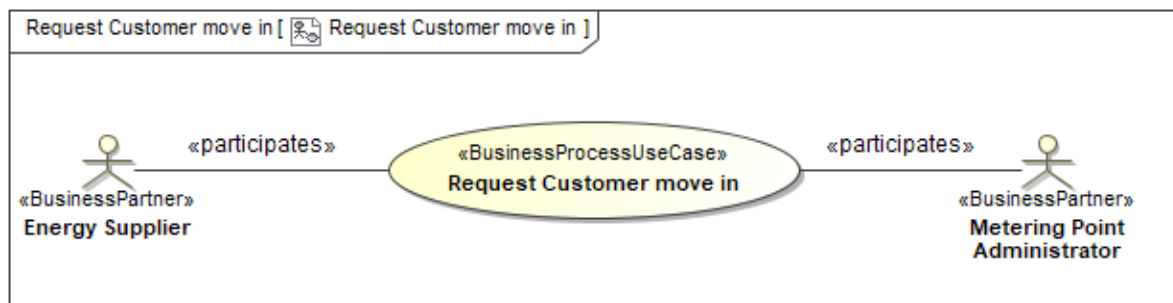


Figure 3 Business Process UseCase: Request Customer move in

### 2.4.1 Description

UseCase description: Request Customer move in	
definition	In this process, an Energy Supplier will send a request for a move in for a new Customer at an Accounting Point and the Metering Point Administrator confirms it.
beginsWhen	When the New Energy Supplier has met all preconditions and sends in the move in request.
preCondition	The New Energy Supplier has an agreement with the new Customer for the Accounting Point, hence is consented.
endsWhen	When the move in request has been confirmed.
postCondition	The Customer and Energy Supplier will be responsible for the energy flow at the Accounting Point from the confirmed move in date.
exceptions	The move in request has been rejected by the Metering Point Administrator to the New Energy Supplier.
actions	See 2.4.2

Table 4 UseCase description: Request Customer move in

## 2.4.2 Business Process

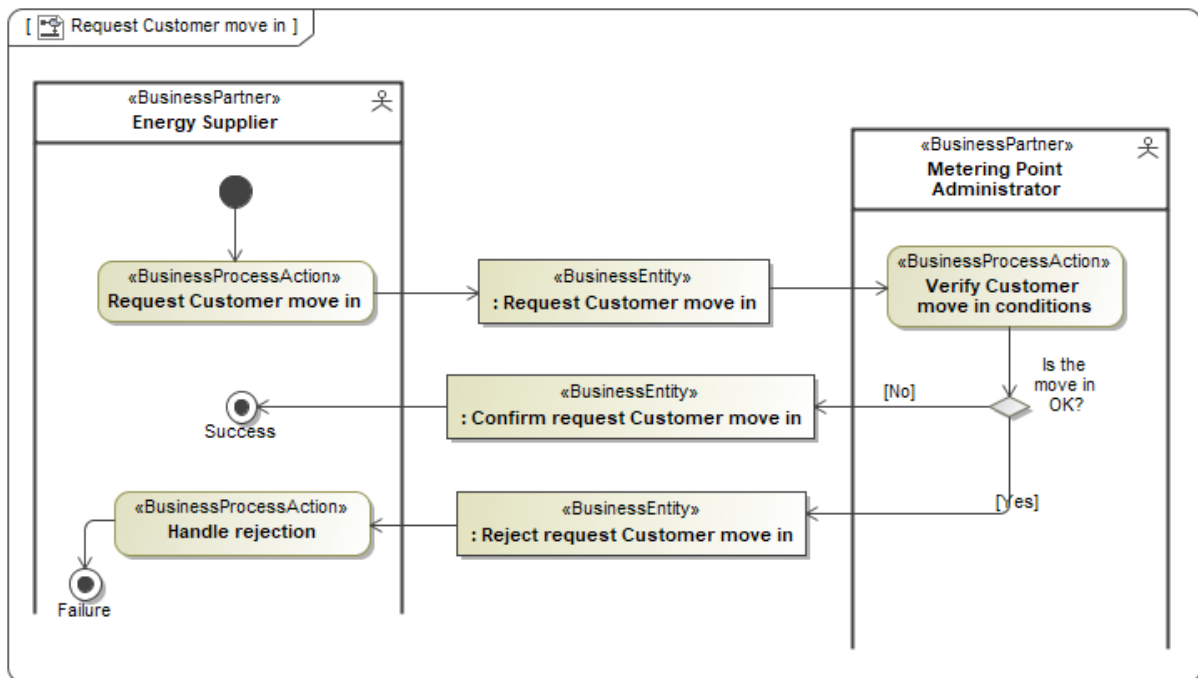


Figure 4 Business Process: Request Customer move in

## 2.5 Notify Customer move in (Business Process UseCase)

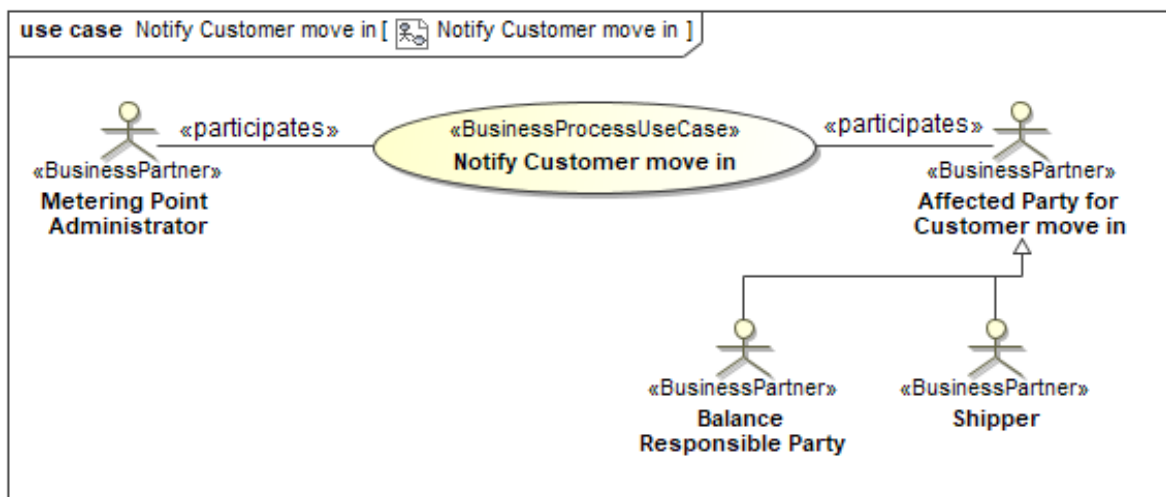


Figure 5 Business Process UseCase: Notify Customer move in

### 2.5.1 Description

UseCase description: Notify Customer move in	
definition	In this process, the Metering Point Administrator will notify the New Balance Responsible Party or New Shipper of the move in.
beginsWhen	When the Customer move in process has been confirmed by the Metering Point Administrator.
preCondition	The Customer move in request has been confirmed by the Metering Point Administrator.
endsWhen	When the New Balance Responsible Party or New Shipper has received the notification.
postCondition	All Affected New Parties have been informed of their responsibilities in the Move in.
exceptions	None
actions	See 2.5.2

Table 5 UseCase description: Notify Customer move in

## 2.5.2 Business Process

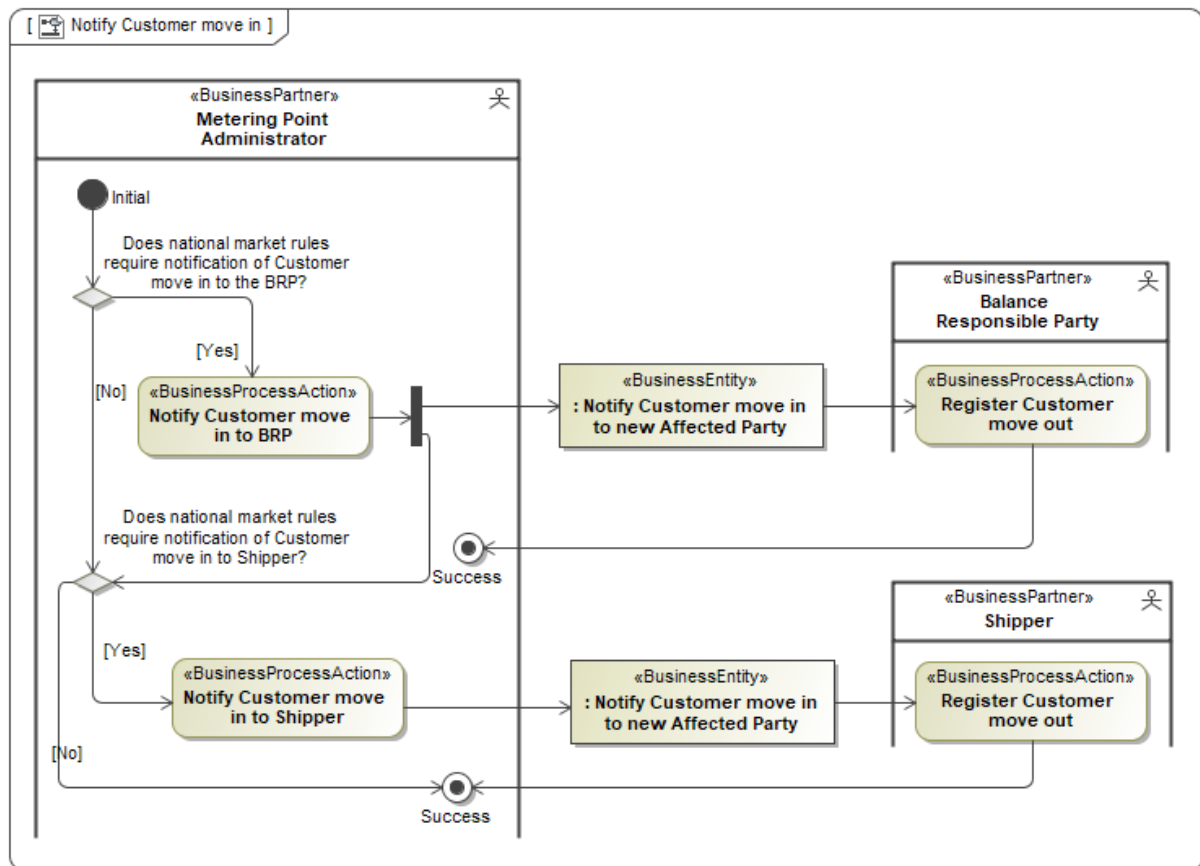


Figure 6 Business process: Notify Customer move in

## 2.6 Notify forced Customer move out (Business Process UseCase)

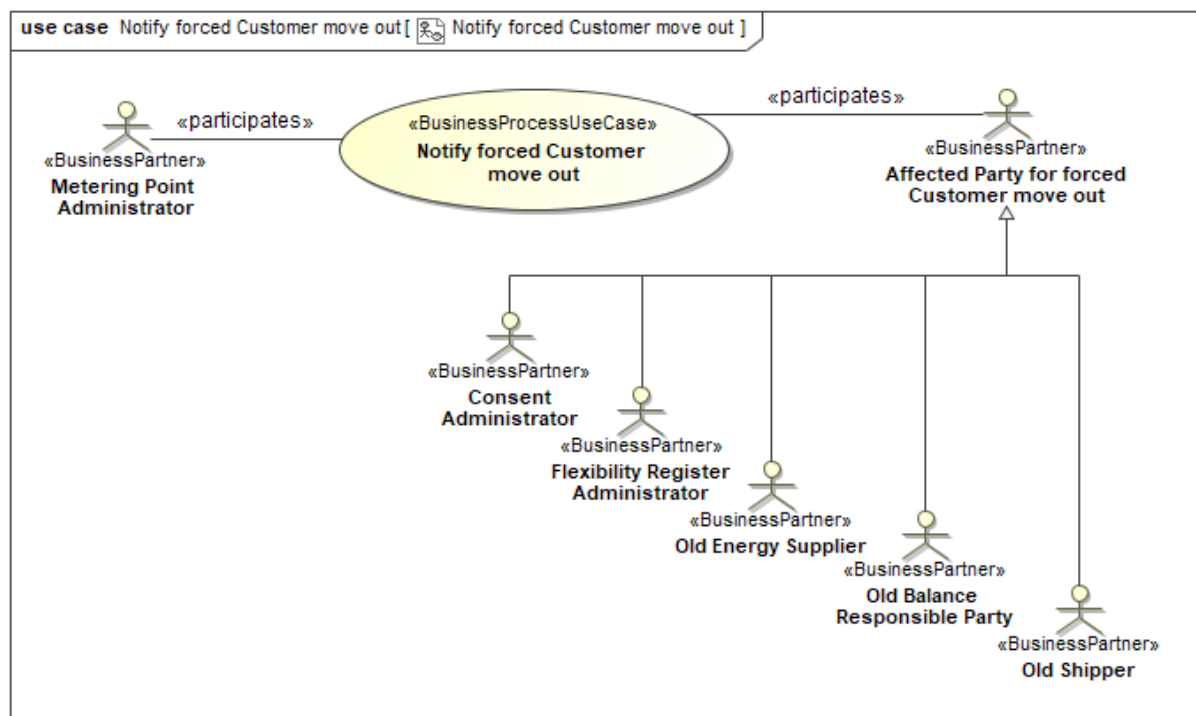


Figure 7 Business Process UseCase: Notify forced Customer move out

### 2.6.1 Description

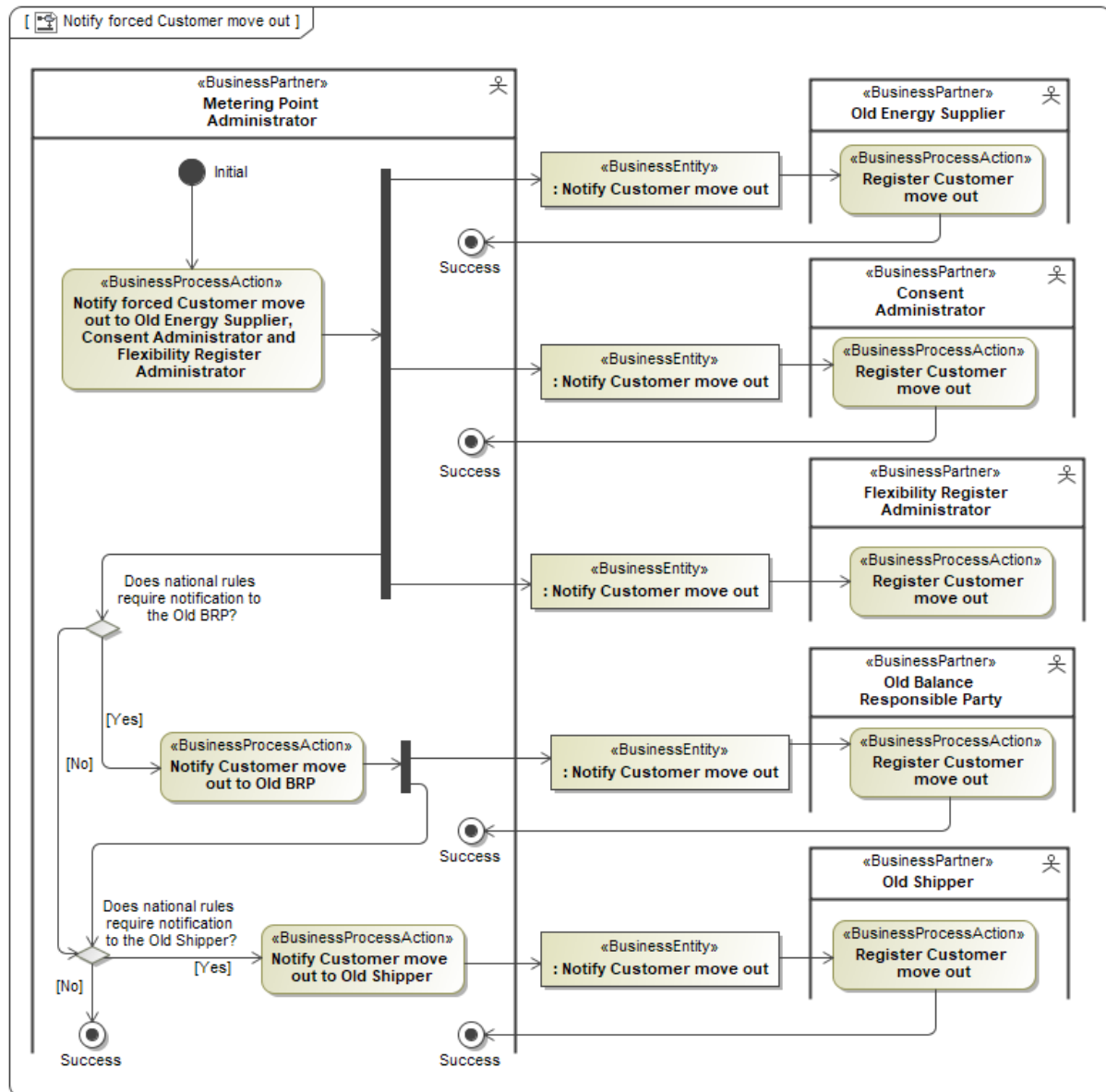
UseCase description: Notify forced Customer move out	
definition	In this process, the Metering Point Administrator will notify the Old Energy Supplier, the Consent Administrator, the Flexibility Register Administrator and if needed by national rules the Old Balance Responsible Party or Old Shipper, of the forced Customer move out.
beginsWhen	When the Customer move in process has been confirmed by the Metering Point Administrator.
preCondition	The Customer move in request has been confirmed by the Metering Point Administrator.  The Old Energy Supplier is still active in the Accounting Point.
endsWhen	When the Affected Parties for forced Customer move out have received the notification.
postCondition	All Affected Parties for forced Customer move out have been informed of the Move in.
exceptions	None



actions	See 2.5.2
---------	-----------

**Table 6** UseCase description: Notify forced Customer move out

## 2.6.2 Business Process



**Figure 8** Business process: Notify forced Customer move out

## 2.7 Notify Accounting Point characteristics

In order for all (new) Linked Parties to operate properly they will be notified with Accounting Point characteristics. *Notify Accounting Point Characteristics* is documented in a separate BRS, see [7]. In this BRS (BRS for alignment of Accounting Point characteristics), the Linked Parties are specified.

## 2.8 Determine meter read

In order to start the energy supply there is a need for a meter read at the start. This meter read may also be used as the final meter read when there is a simultaneous move out. The Process area Determine Meter Read is documented in the ebIX® model Measure [6].

### 3 Business Domain View: Customer move out (Business Process UseCase)

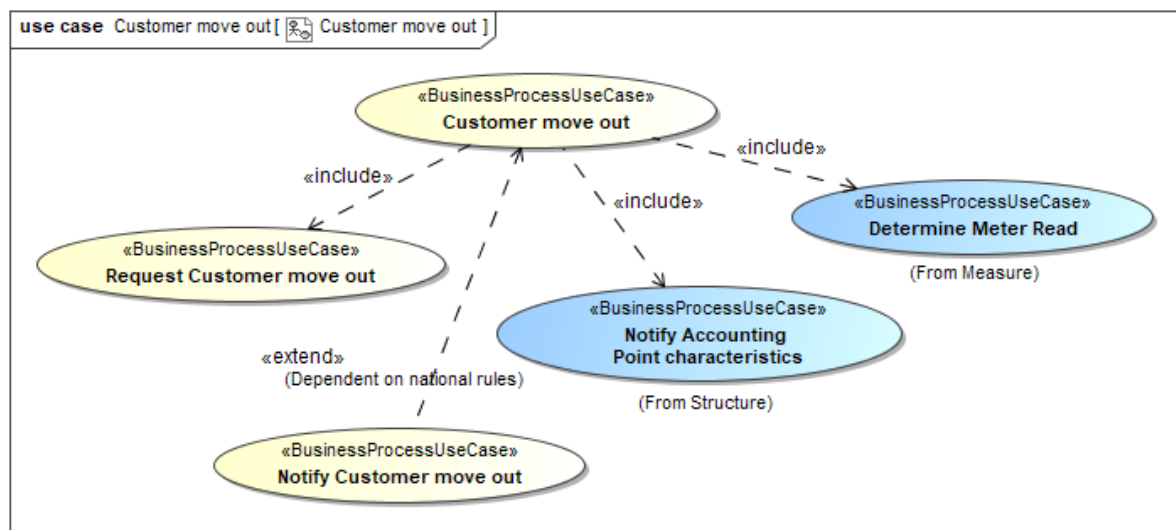


Figure 9 Business Process UseCase: Customer move out

#### 3.1 Description

UseCase description: Customer move out	
definition	In this process, all necessary sub-processes will be fulfilled to move a Customer out from an Accounting Point, i.e. ending responsibility for the energy consumption at or energy infeed from the Accounting Point. The process includes removing the Energy Supplier, and Balance Responsible Party or Shipper, in the Metering Point administration and enabling the Consent Administrator to end all relevant consents.
beginsWhen	When the Energy Supplier sends a request for Customer move out to the Metering Point Administrator.
preCondition	The Customer and his Energy Supplier are registered for this Accounting Point in the Metering Point administration.
endsWhen	When the Customer and its Energy Supplier and Balance Responsible Party or Shipper, have been informed that they are removed from the Accounting Point, the Old Energy Supplier and Old Balance Responsible Party and/or Old Shipper have been notified, all Linked Parties have received Accounting Point characteristics and the meter read for the move out has been determined.
postCondition	The Customer is moved out and the Energy Supplier, and Balance Responsible Party or Shipper, are not responsible for the energy delivery at the Accounting Point from the move out date and the Energy Supplier can

	settle the account with the Customer. All relevant consents from the Customer for the Accounting Point can be removed.
exceptions	The move out request was rejected.  See also Table 2.
actions	See 3.2

Table 7 UseCase description: Customer move out

## 3.2 Business Process

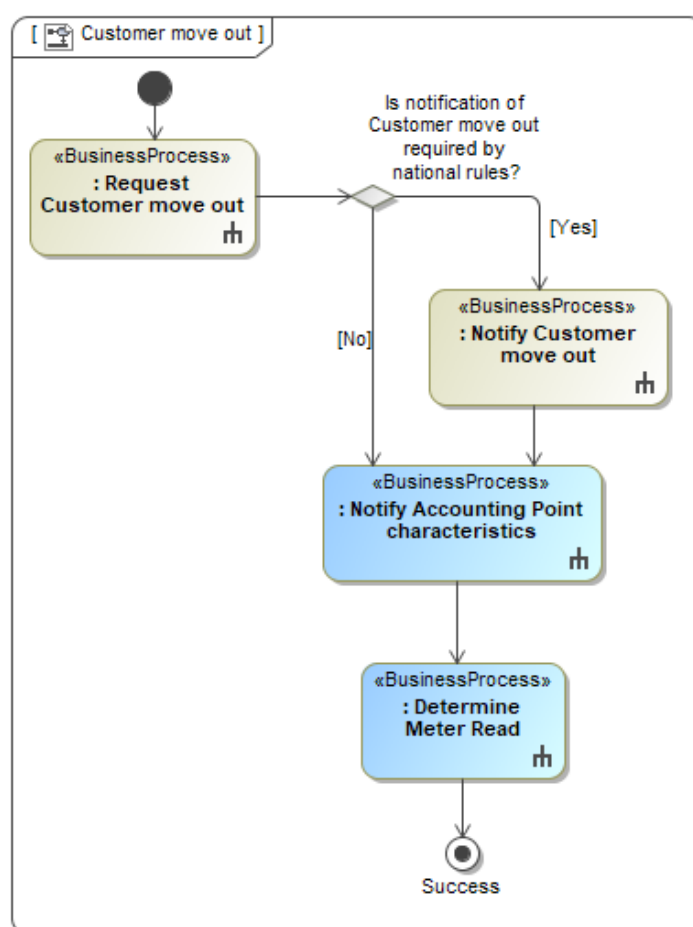


Figure 10 Business process: Customer move out

### 3.3 Request Customer move out

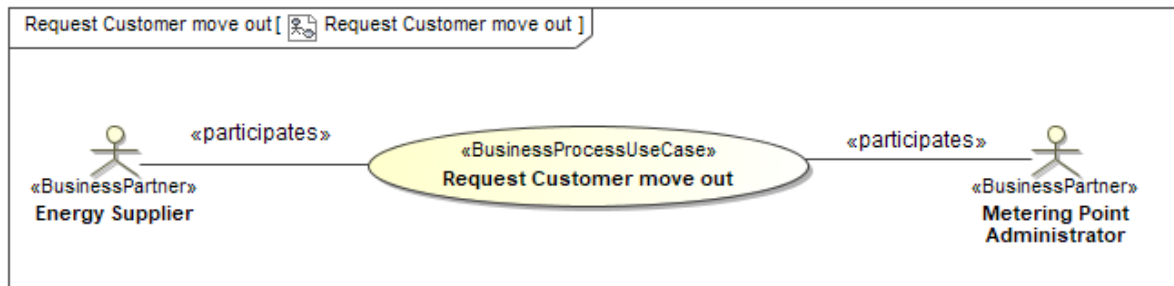


Figure 11 Business Process UseCase: Request Customer move out

#### 3.3.1 Description

UseCase description: Request Customer move out	
definition	In this process, the Energy Supplier will send a request for a Customer move out for the Accounting Point of the Customer and the Metering Point Administrator confirms it.
beginsWhen	When the Energy Supplier sends the Customer move out request.
preCondition	The Customer and his Energy Supplier are registered for this Accounting Point in the Metering Point administration and the Customer wants to move out.
endsWhen	When the request for move out has been confirmed by the Metering Point Administrator to the Energy Supplier.
postCondition	The Energy Supplier and the Customer will not be responsible for the energy flow at the Accounting Point from the move out date.
exceptions	The request for move out has been rejected by the Metering Point Administrator.
actions	See 3.3.2

Table 8 UseCase description: Request Customer move out

### 3.3.2 Business Process

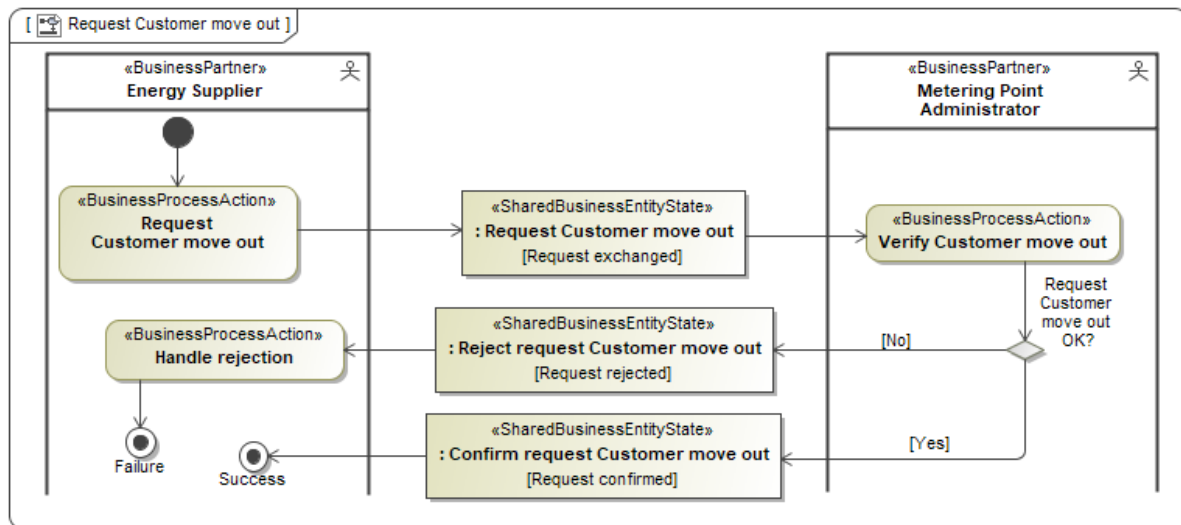


Figure 12 Business Process UseCase: Request Customer move out

### 3.4 Notify move out (Business Process UseCase)

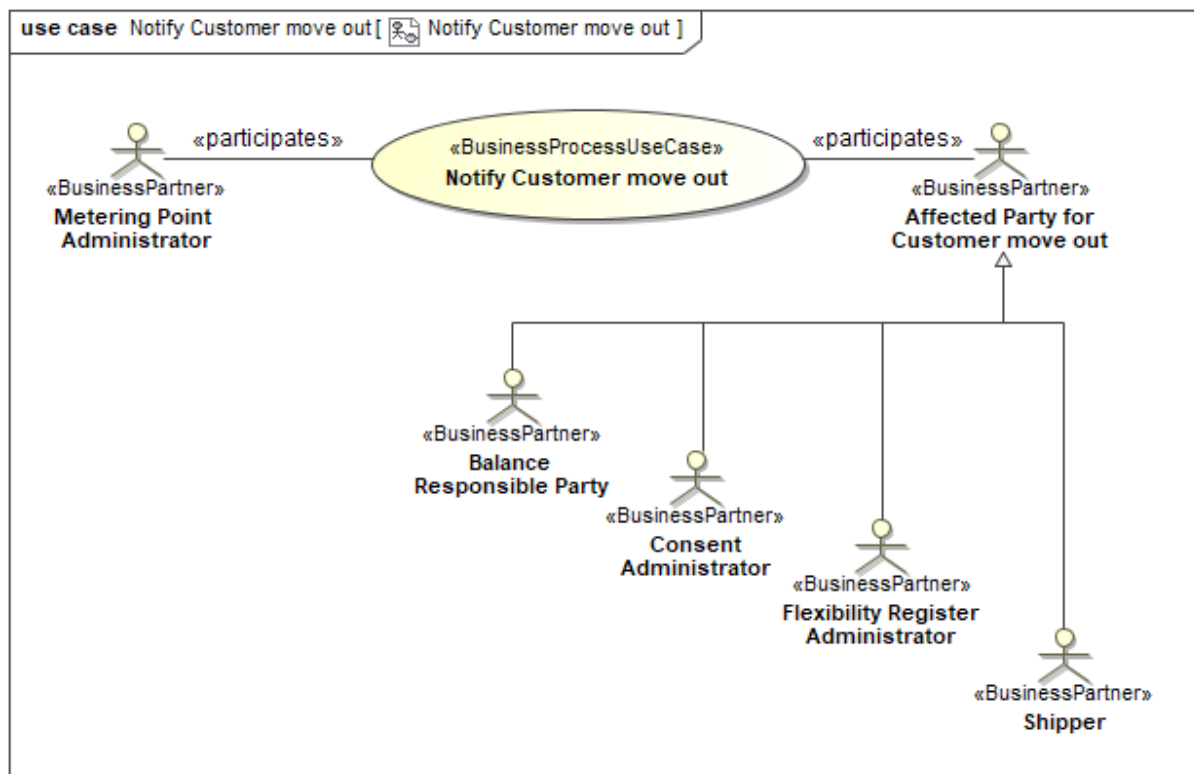


Figure 13 Business Process UseCase: Notify Customer move out

#### 3.4.1 Description

UseCase description: Notify Customer move out	
definition	In this process, the Metering Point Administrator will notify the Consent Administrator, the Flexibility Register Administrator and based on national rules, the Balance Responsible Party or the Shipper, of the move out.
beginsWhen	When the Request Customer move out has been confirmed by the Metering Point Administrator to the Energy Supplier.
preCondition	The Customer move out request has been confirmed.
endsWhen	When the Consent Administrator, and based on national rules, the Balance Responsible Party or Shipper have received the notification.
postCondition	All Affected Parties for Customer move out have been informed of the Move out and relevant consents will be terminated.
exceptions	None
actions	See 3.4.2

Table 9 UseCase description: Notify Customer move out

### 3.4.2 Business Process

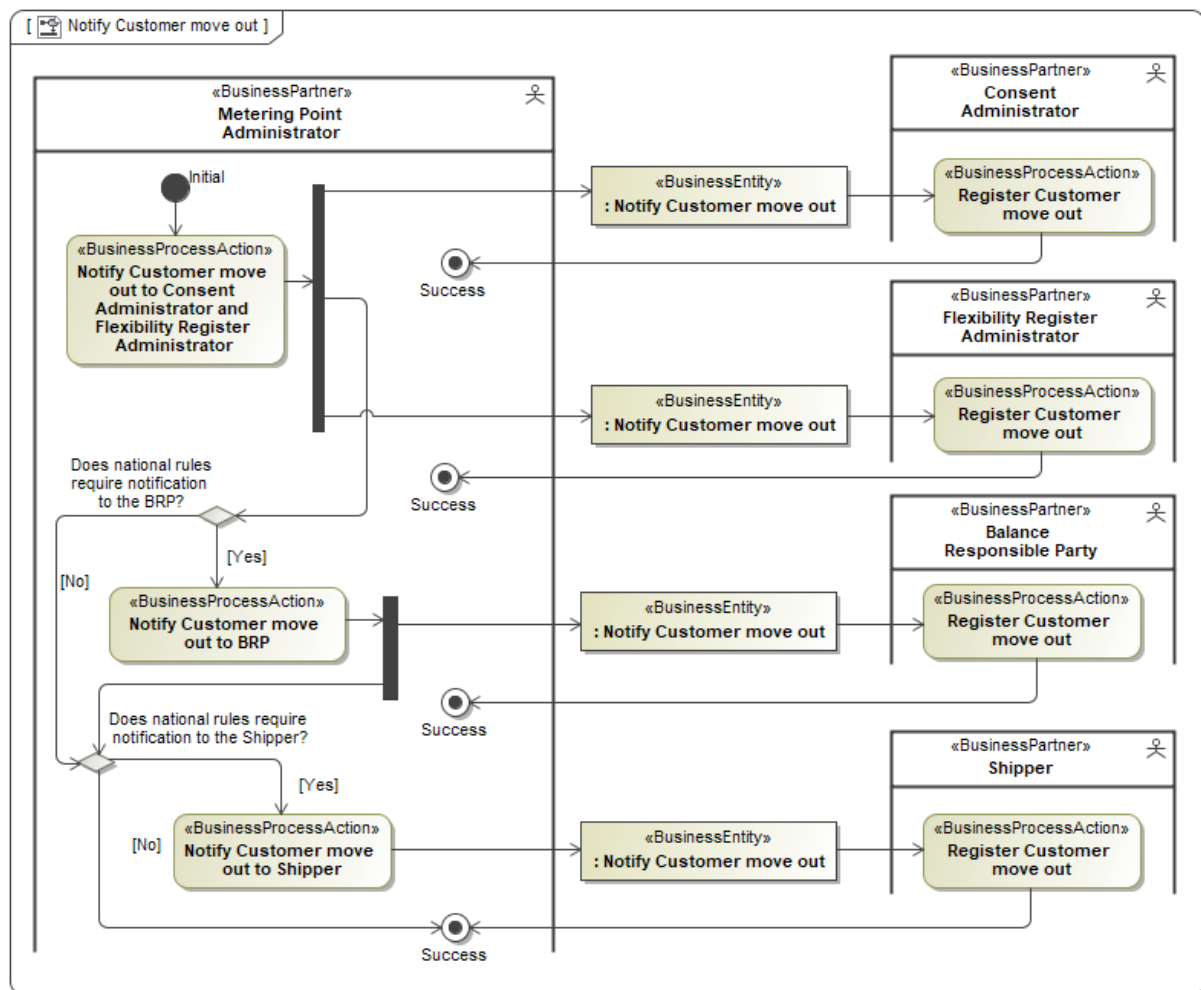


Figure 14 Business Process: Notify Customer move out

### 3.5 Notify Accounting Point characteristics

The (still) Linked Parties need to be informed of the new situation by sending the Accounting Point characteristics. *Notify Accounting Point characteristics* is documented in a separate document, see [7]. In this document the “Linked Parties” are specified.

### 3.6 Determine meter reading

In order to make a final bill the Energy Supplier and Grid Company need a final meter read. The Process area *Determine Meter Read* is documented in the ebIX® model Measure [6].



## 4 Business Partner View: Customer move

In the diagram below is shown the definitions of the roles used in this BRS, if applicable, based on roles from the Harmonised Electricity Market Role Model, see [2], however in some cases updated to fit both the electricity and the gas market.

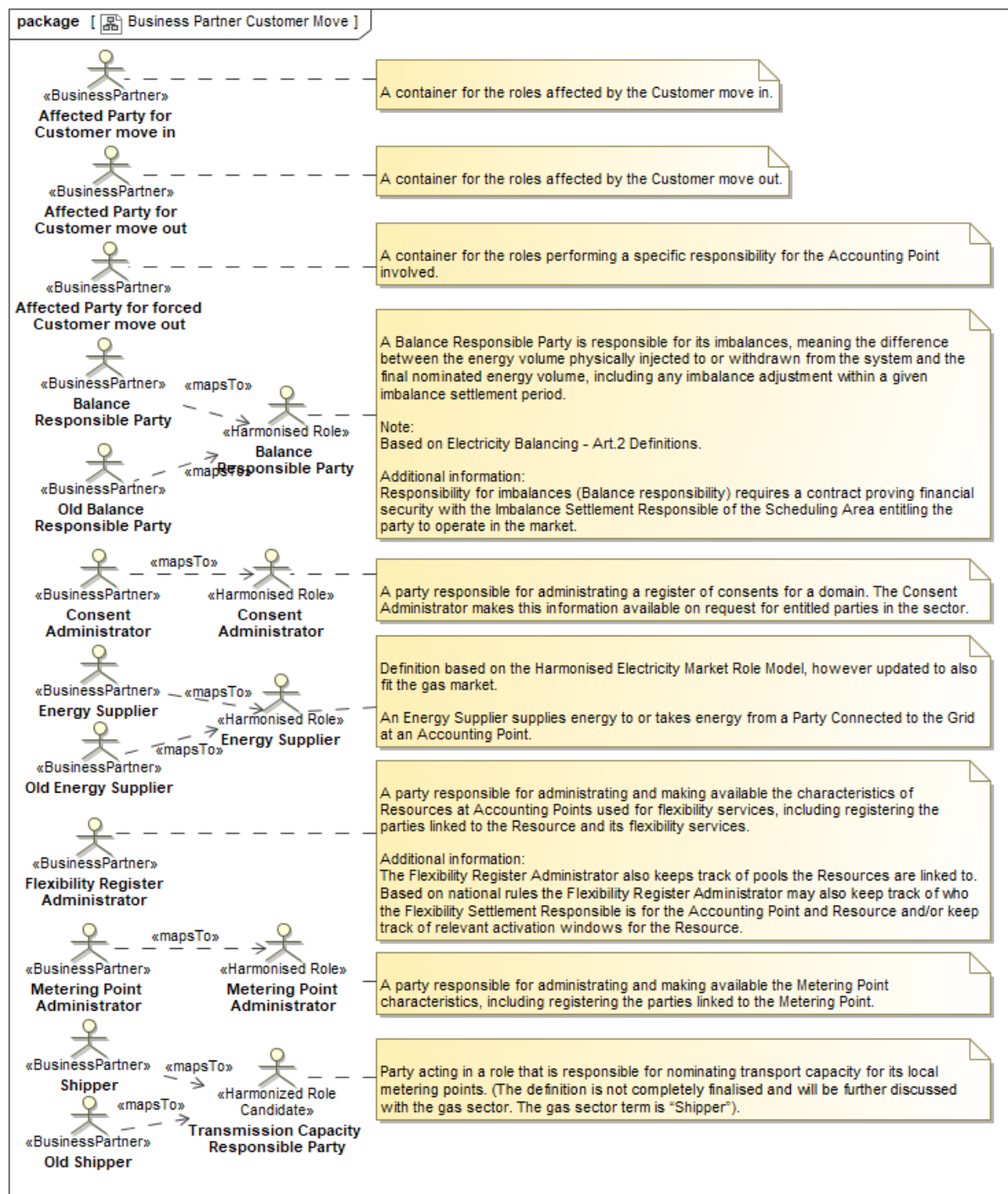


Figure 15 Business Partner View: Customer move

## 5 Business Entity View: Customer move

A general introduction to the Business Entity View can be found in the Introduction to ebIX® Business Requirements and Business Information Models ([www.ebix.org](http://www.ebix.org)), [3].

## 5.1 Request Customer move in (Class Diagram)

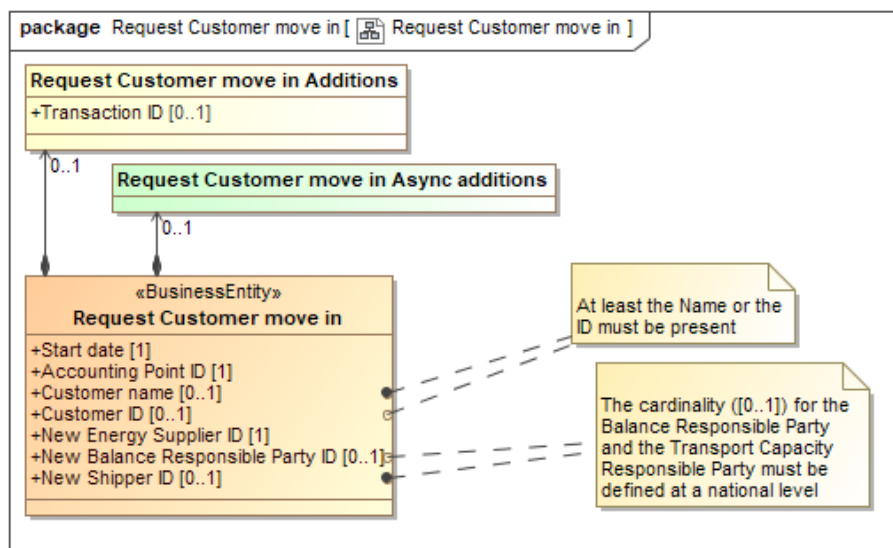


Figure 16 Class Diagram: Request Customer move in

### 5.1.1 Element definitions: Request Customer move in

«Business entity» Request Customer move in	The information set sent by an Energy Supplier to the Metering Point Administrator when requesting a Customer move in.
Start date	The requested date for the New Energy Supplier to take over the energy supply for the Customer at this Accounting Point.
Accounting Point ID	The unique identification of the Accounting Point.
Customer name	The name of the Customer who is moving in at the Accounting Point that will have the grid access contract.
New Energy Supplier ID	The unique identification of the requesting New Energy Supplier.
New Balance Responsible Party ID	The unique identification of the New Balance Responsible Party, as stated by the New Energy Supplier.
New Shipper ID	The unique identification of the New Shipper, as stated by the New Energy Supplier.
Request Customer move in Additions	Additional information, related to the Customer move in, to be agreed on a national level.
Transaction ID	The unique identification of this set of information given by the requesting Energy Supplier.
Customer ID	The identification of the Customer, that will have or has the grid access contract, which is moving in at the Accounting Point.
Request Customer move in Async Additions	Additional information, related to the Customer move in, needed when using asynchronous communication, however not used in this request.

Table 10 Element definitions: Request Customer move in

## 5.2 Confirm request Customer move in (Class Diagram)

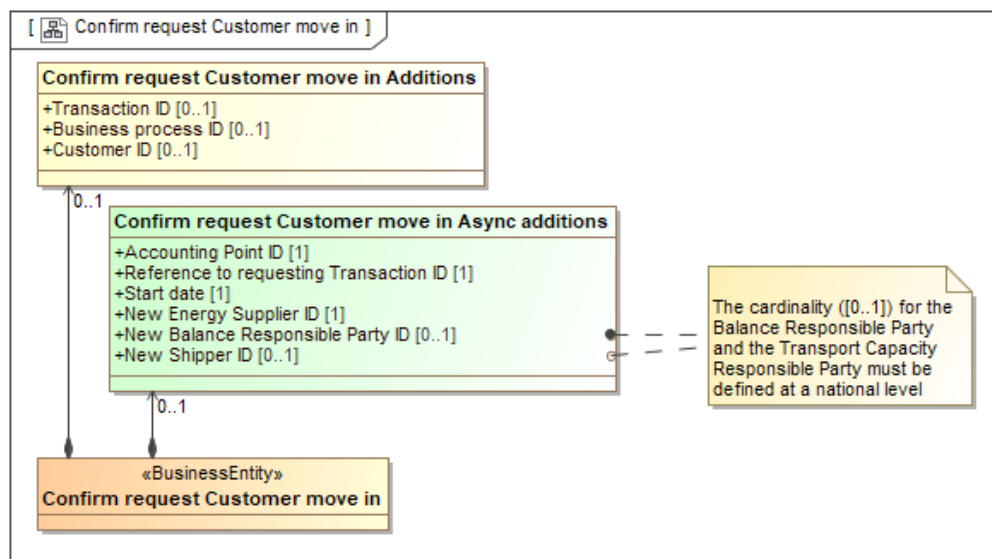


Figure 17 Class Diagram: Confirm request Customer move in

### 5.2.1 Element definitions: Confirm request Customer move in

<b>«Business entity»</b>	The information set, sent by the Metering Point Administrator to the requesting Energy Supplier, to confirm this Customer move in.
Confirm request Customer move in Additions	Information related to confirmation of Customer move in, to be agreed on a national level.
Transaction ID	The unique identification of this set of information given by the Metering Point Administrator.
Business process ID	The unique identification given by the Metering Point Administrator of this requested move in process that this response is a part of.
Customer ID	The identification of the Customer that moves in.
Confirm request Customer move in Async Additions	Information related to confirming Customer move in, needed when using an asynchronous communication.
Reference to requesting Transaction ID	The Transaction ID from the request, given by the requesting Energy Supplier.
Start date	The confirmed date for this for the New Energy Supplier to take over the energy supply for this Accounting Point.
Accounting Point ID	The unique identification of the Accounting Point.
New Energy Supplier ID	The unique identification of the requesting and confirmed New Energy Supplier.
New Balance Responsible Party ID	The unique identification of the confirmed New Balance Responsible Party.
New Shipper ID	The unique identification of the confirmed New Shipper.

Table 11 Element definitions: Confirm request Customer move in

### 5.3 Reject request Customer move in (Class Diagram)

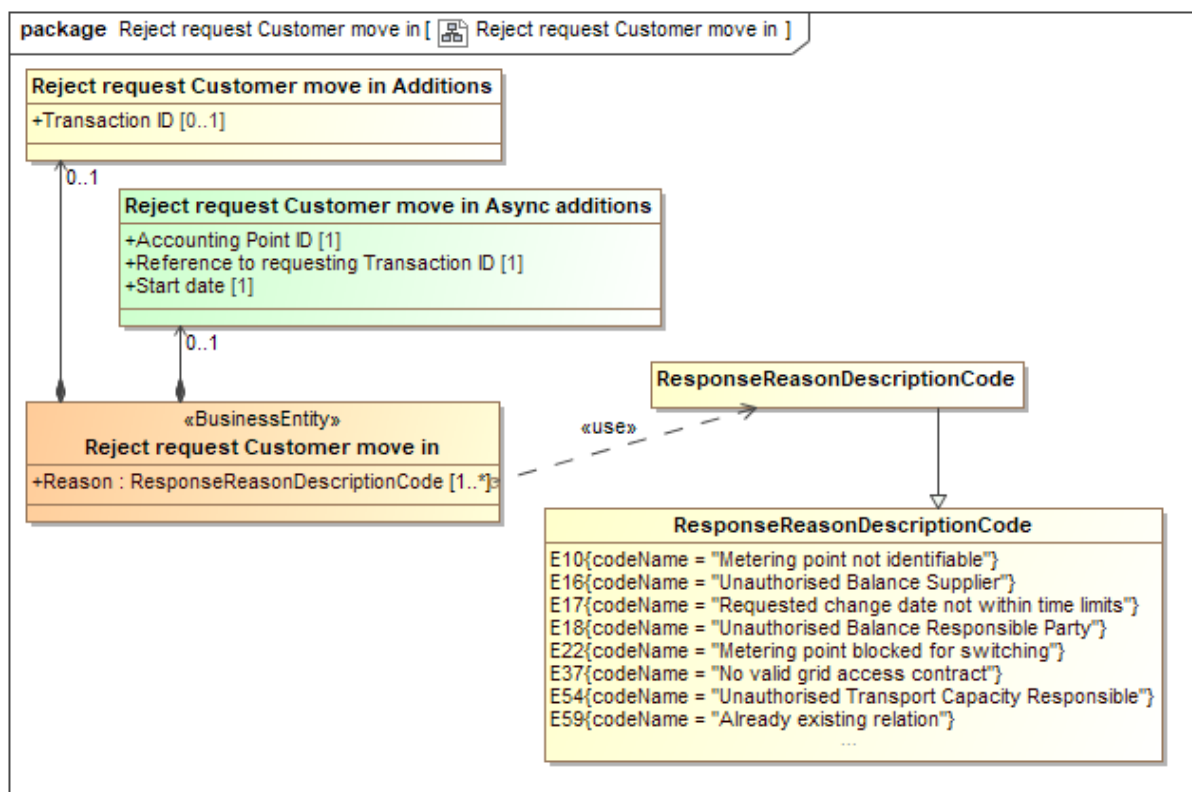


Figure 18 Class Diagram: Reject request Customer move in

#### 5.3.1 Element definitions: Reject request Customer move in

<b>«Business entity»</b> Reject request Customer move in	The information set sent by the Metering Point Administrator to the requesting Energy Supplier to reject this Customer move in
Reason	A code specifying (one of) the reason(s) for the rejection of the requested move in.
Reject request Customer move in Additions	Additional information, related to rejection of Customer move in, needed for technical reasons or to be agreed on a national level.
Transaction ID	The unique identification of this set of information given by the Metering Point Administrator.
Reject request Customer move in Async Additions	Additional information, related to the Customer move in, needed when using asynchronous communication.
Reference to requesting Transaction ID	The Transaction ID from the request given by the requesting Energy Supplier.
Start date	The requested date for the move in that is rejected.
Accounting Point ID	The unique identification of the Accounting Point.

Table 12 Element definitions: Reject request Customer move in

## 5.4 Notify Customer move in to New Affected Party (Class Diagram)

The New Affected Party may be:

- New Balance Responsible Party and/or
- New Shipper

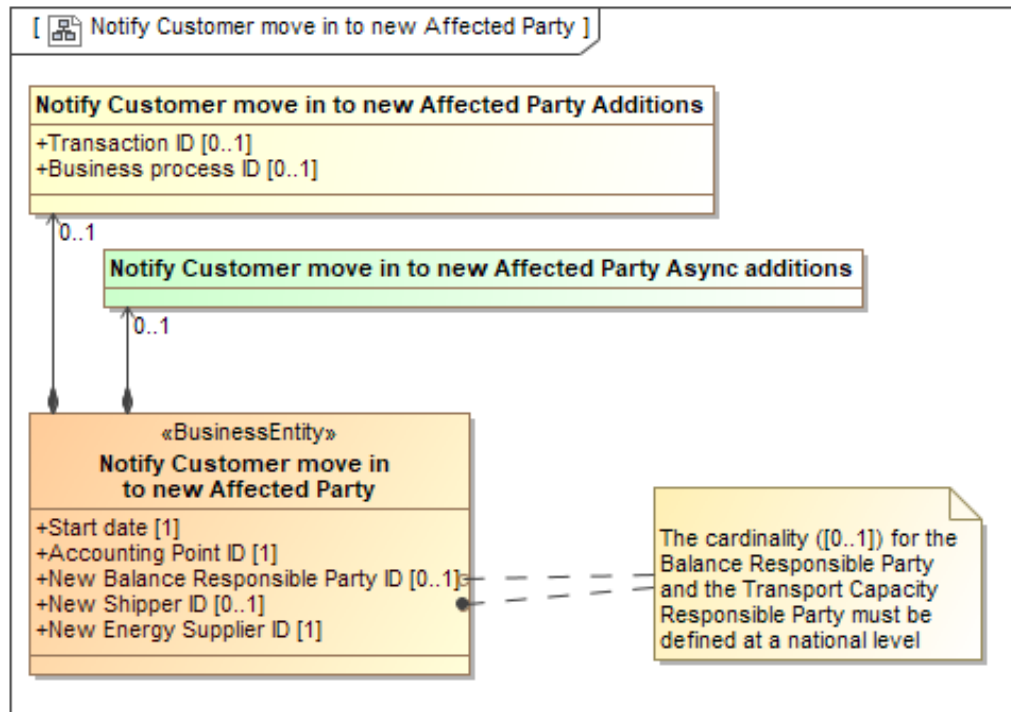


Figure 19 Class Diagram: Notify Customer move-in to New Affected Party

### 5.4.1 Element definitions: Notify Customer move in to New Affected Party

<b>«Business entity»</b> Notify Customer move in to New Affected Party	The information set sent by the Metering Point Administrator to the new Balance Responsible Party and/or new Shipper to notify this Customer move in.
Start date	The date for the New Balance Responsible Party and/or the New Shipper to take over the balance responsibility or transport capacity responsibility for this Accounting Point.
Accounting Point ID	The unique identification of the Accounting Point.
New Energy Supplier	The unique identification of the New Energy Supplier for the Accounting Point. <b>Remark:</b> <ul style="list-style-type: none"> <li>• The New Energy Supplier is added to enable the New Balance Responsible Party and/or the New Shipper to prepare their portfolio.</li> </ul>
New Balance Responsible Party ID	The unique identification of the New Balance Responsible Party that takes over the balance responsibility for this Accounting Point from the Start date.

New Shipper ID	The unique identification of the New Shipper that takes over the transport capacity responsibility for this Accounting Point from the Start date.
Notify Customer move in to New Affected Party Additions	Additional information, related to the notification of Customer move in to new BRP and new TCR, to be agreed on a national level.
Transaction ID	The unique identification of this set of information given by the Metering Point Administrator.
Business process ID	The unique identification, given by the Metering Point Administrator, of this move in process that this notification is a part of.
Notify Customer move in to New Affected Party Async Additions	Additional information, related to the notify Customer move in to new BRP and new TCR, when using asynchronous communication, however not used in this notification.

**Table 13** Element definitions: Notify Customer move-in to New Affected Party

## 5.5 Notify Customer move in to Old Affected Party (Class Diagram)

The Old Affected Party may be:

- Energy Supplier and
- Old Balance Responsible Party and/or
- Old Shipper

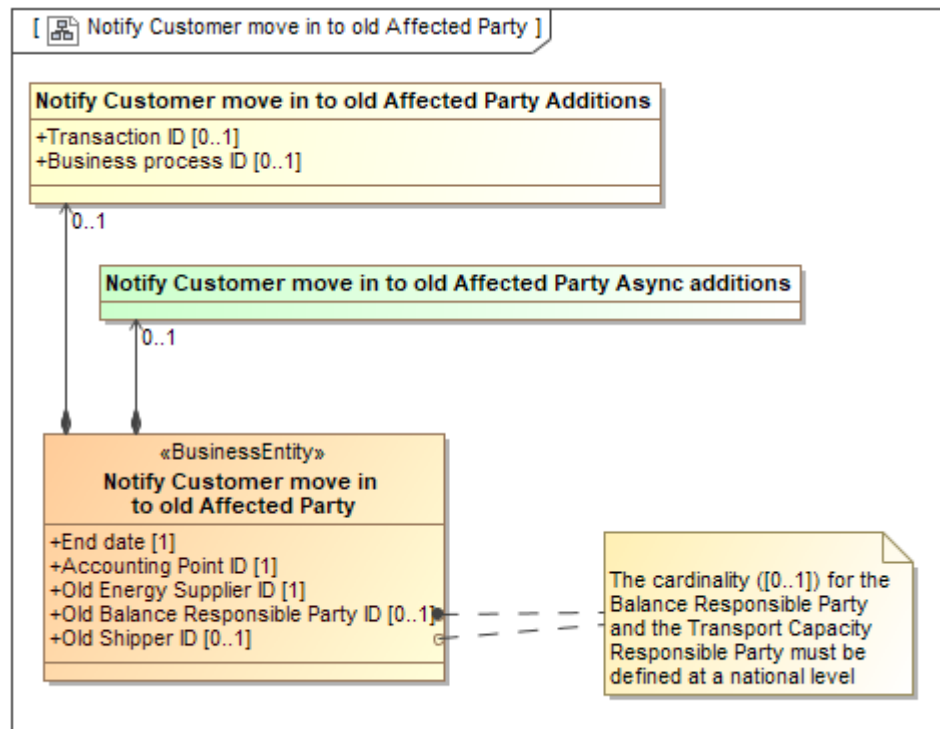


Figure 20 Class Diagram: Notify Customer move-in to Old Affected Party

### 5.5.1 Element definitions: Notify Customer move-in to Old Affected Party

<b>«Business entity»</b> Notify Customer move in to Old Affected Party	The information set, sent by the Metering Point Administrator, to the old Energy Supplier, old Balance Responsible Party and/or old Shipper, to notify this move in.
End date	The date from when the Old Energy Supplier, Old Balance Responsible Party or Old Shipper no longer have a responsibility for this Accounting Point.
Accounting Point ID	The unique identification of the Accounting Point.
Old Energy Supplier ID	The unique identification of the Energy Supplier that no longer is responsible for the energy supply for this Accounting Point from the End date.
Old Balance Responsible Party ID	The unique identification of the Balance Responsible Party that no longer has the balance responsibility for this Accounting Point from the End date.



Old Shipper ID	The unique identification of the Shipper that no longer has the transport capacity responsibility for this Accounting Point from the End date.
Notify Customer move in to Old Affected Party Additions	Additional information, related to the notification of Customer move in, to old BS, old BRP and old TCR, agreed on a national level.
Transaction ID	The unique identification of this set of information given by the Metering Point Administrator.
Business process ID	The unique identification, given by the Metering Point Administrator, of this move in process that this notification is a part of.
Notify Customer move in to Old Affected Party Async Additions	Additional information, related to the notify Customer move in, to old BS, old BRP and old TCR, however not used in this notification.

**Table 14** Element definitions: Notify Customer move-in to Old Affected Party

## 5.6 Request Customer move out (Class Diagram)

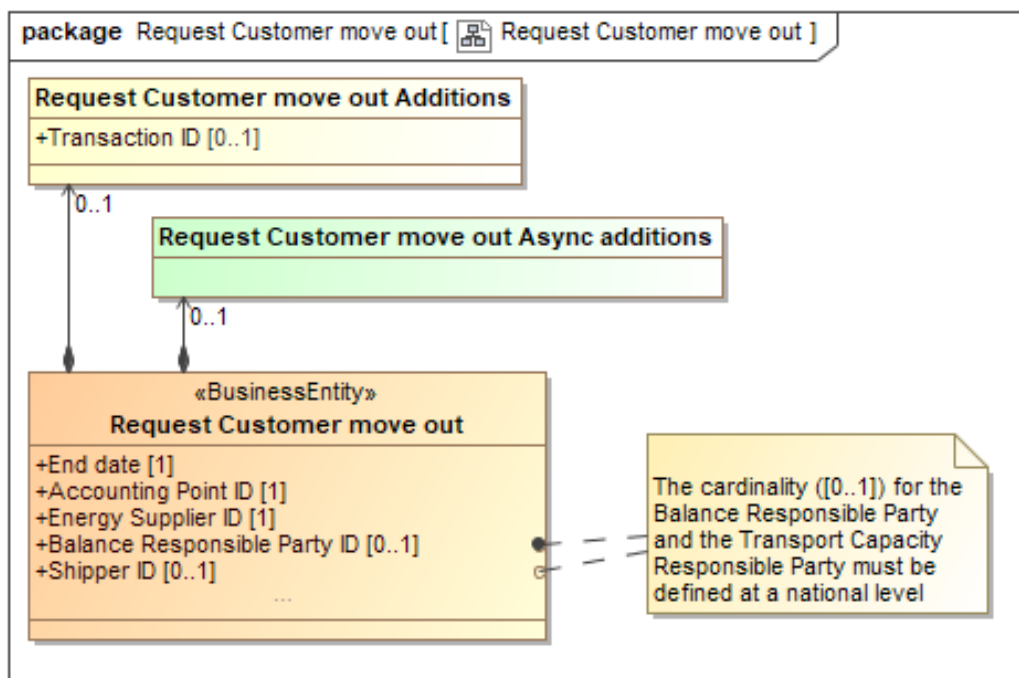


Figure 21 Class Diagram: Request Customer move out

### 5.6.1 Element definitions: Request Customer move out

<b>«Business entity»</b> Request Customer move out	The information set to be sent by an Energy Supplier to the Metering Point Administrator when requesting a Customer move out.
End date	The date from when the Energy Supplier requests to end energy supply for this Accounting Point.
Accounting Point ID	The unique identification of the Accounting Point.
Energy Supplier ID	The unique identification of the requesting Energy Supplier.
Balance Responsible Party ID	The unique identification of the Balance Responsible Party that no longer will be balance responsible for this Accounting Point from the End date.
Shipper ID	The unique identification of the Shipper that no longer will be transport capacity responsible for this Accounting Point from the End date.
Request Customer move out Additions	Additional information, related to the Customer move out, to be agreed on a national level.
Transaction ID	The unique identification of this set of information given by the requesting Energy Supplier.
Request Customer move out Async Additions	Additional information, related to the Customer move out, needed when using asynchronous communication, however not used in this request.

Table 15 Element definitions: Request Customer move out

## 5.7 Confirm request Customer move out (Class Diagram)

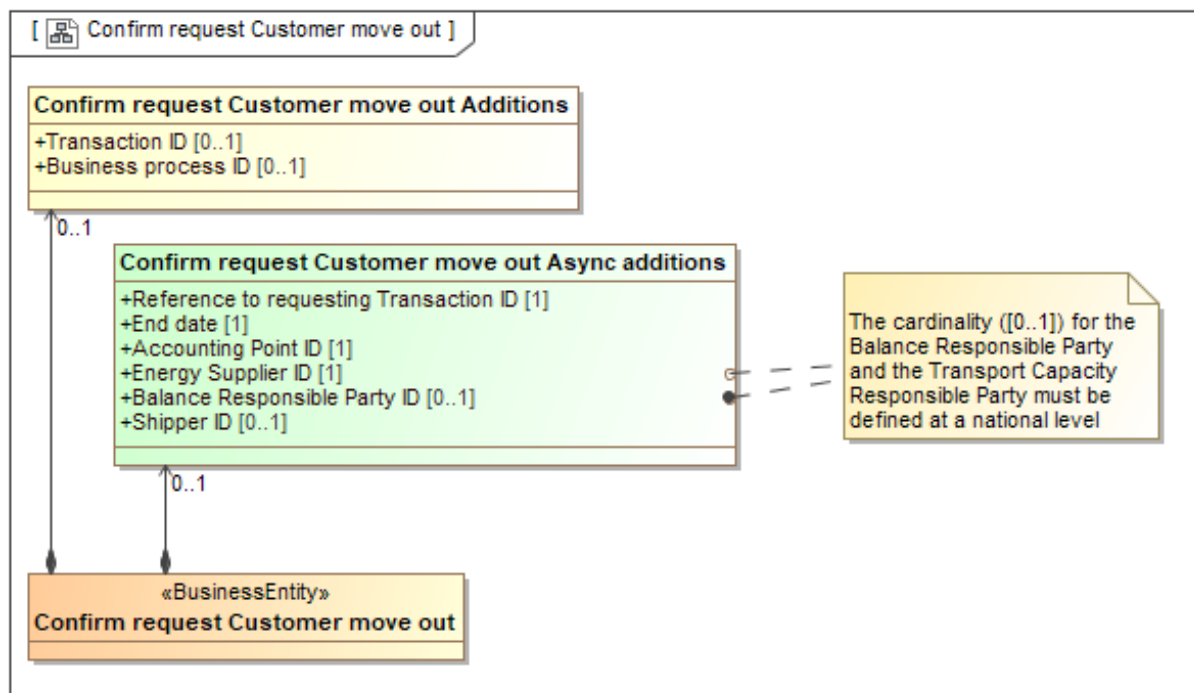


Figure 22 Class Diagram: Confirm request Customer move out

### 5.7.1 Element definitions: Confirm request Customer move out

<b>«Business entity»</b>	
Confirm request Customer move out	The information set sent by the Metering Point Administrator to the requesting Energy Supplier to confirm this Customer move out.
Confirm request Customer move out Additions	Information related to confirmation of Customer move out, to be agreed on a national level.
Transaction ID	The unique identification of this set of information given by the Metering Point Administrator.
Business process ID	The unique identification, given by the Metering Point Administrator, of this requested Customer move out process that this response is part of.
Confirm request Customer move out Async Additions	Information related to the confirmation of Customer move out, needed when using an asynchronous communication.
Reference to requesting Transaction ID	The Transaction ID from the request given by the requesting Energy Supplier.
End date	The date from when the Energy Supplier no longer is supplying energy for this Accounting Point
Accounting Point ID	The unique identification of the Accounting Point.
Energy Supplier ID	The unique identification of the requesting Energy Supplier that no longer will be supplying the Accounting Point from the End date.

Balance Responsible Party ID	The unique identification of the Balance Responsible Party that no longer will be balance responsible for this Accounting Point from the End date.
Shipper ID	The unique identification of the Shipper that no longer will be transport capacity responsible for this Accounting Point from the End date.

**Table 16** Element definitions: Confirm request Customer move out

## 5.8 Reject request Customer move out (Class Diagram)

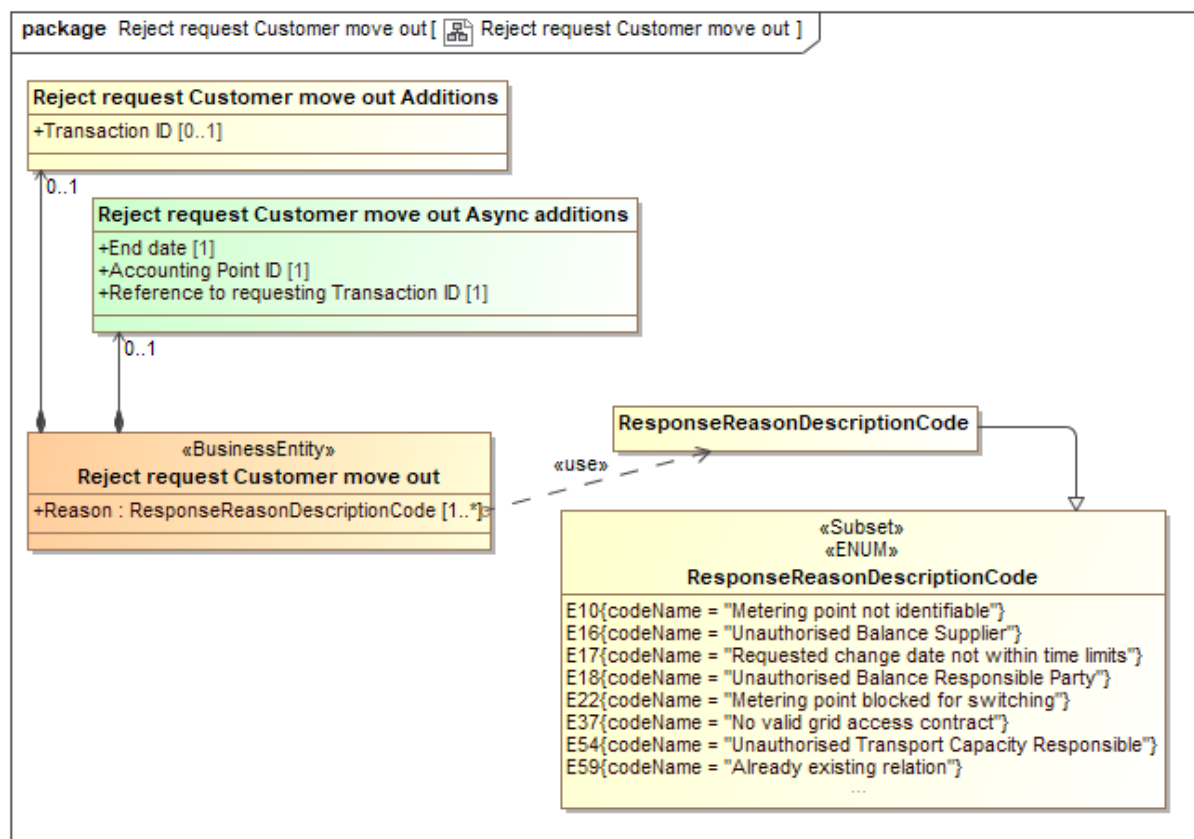


Figure 23 Class Diagram: Reject request Customer move out

### 5.8.1 Element definitions: Reject request Customer move out

<b>«Business entity»</b> Reject request Customer move out	The information set sent by the Metering Point Administrator to the requesting Energy Supplier to reject this Customer move out.
Reason	A code specifying (one of) the reason for the rejection of the requested Customer move out.
Reject request Customer move out Additions	Additional information, related to rejection of Customer move out, to be agreed on a national level.
Transaction ID	The unique identification of this set of information given by the Metering Point Administrator.
Reject request Customer move out Async Additions	Additional information, related to the Customer move out, needed when using asynchronous communication.
Reference to requesting Transaction ID	The Transaction ID from the request given by the requesting Energy Supplier.
End date	The requested date for this move out that is rejected.
Accounting Point ID	The unique identification of the Accounting Point.

Table 17 Element definitions: Reject request Customer move out

## 5.9 Notify Customer move out (Class Diagram)

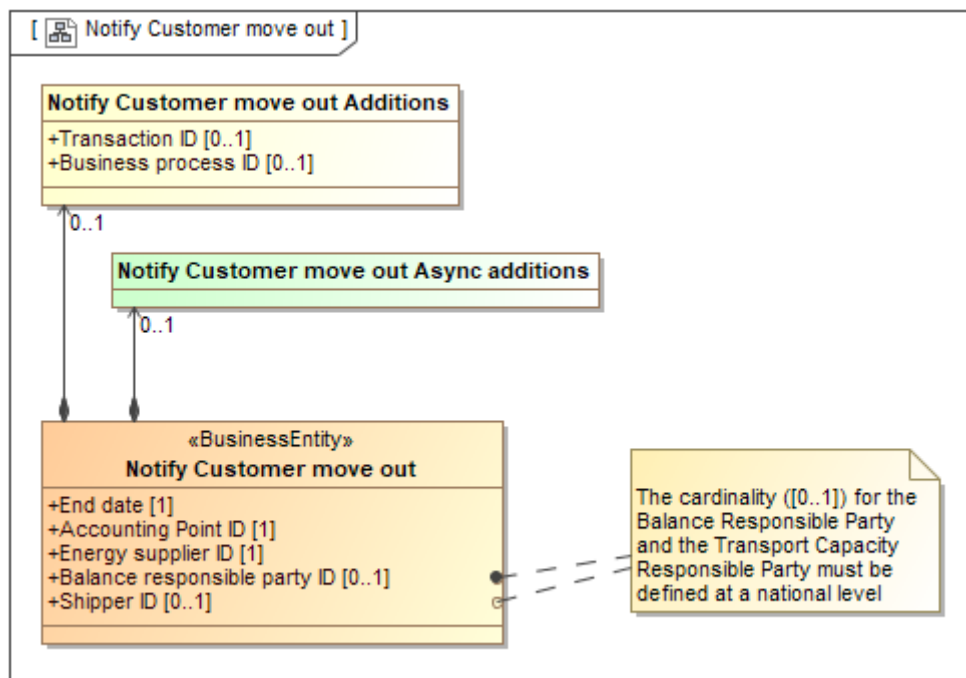


Figure 24 Class Diagram: Notify Customer move out

### 5.9.1 Element definitions: Notify Customer move out

<b>«Business entity»</b> Notify Customer move out	The information set sent by the Metering Point Administrator when notifying Customer move out to the Old Balance Responsible Party and/or the Old Shipper.
End date	The date from when the Balance Responsible Party or the Shipper no longer has any responsibility for this Accounting Point.
Accounting Point ID	The unique identification of the Accounting Point.
Energy Supplier ID	The unique identification of the Energy Supplier that from the End date no longer is supplying energy for this Accounting Point.
Balance Responsible Party ID	The unique identification of the Balance Responsible Party that from the End date no longer is balance responsible for this Accounting Point.
Shipper ID	The unique identification of the Shipper that from the End date no longer is transport capacity responsible for this Accounting Point.
Notify Customer move out Additions	Additional information, related to the notification of Customer move out, to the Old Balance Responsible Party and/or the Old Shipper, to be agreed on a national level.
Transaction ID	The unique identification of this set of information given by the Metering Point Administrator.

Business process ID	The unique identification, given by the Metering Point Administrator, of this Customer move out process that this notification is a part of.
Notify Customer move out Async Additions	Additional information, related to the notify Customer move out, to the Old Balance Responsible Party and Old Shipper, however not used in this notification.

**Table 18** Element definitions: Notify Customer move out

## Appendix A. Header and Context information for the class diagrams

### A.1. Header and Context Information attributes definitions

Class/attribute	Sector <sup>2</sup>	Description
Header and Context Information		The set of information specifying the information to be added to this payload to enable the exchange as a document.
Document Type		A code representing the document type used for the exchange of this set of information.
Business Reason		A code representing the business reason for the exchange of this set of information.
Ancillary Business Process Role		A code representing the market role taking part in this exchange together with the Responsible Role, responsible for the process/this exchange.

Table 19 Header and Context Information attributes definitions

### A.2. Request Customer move in

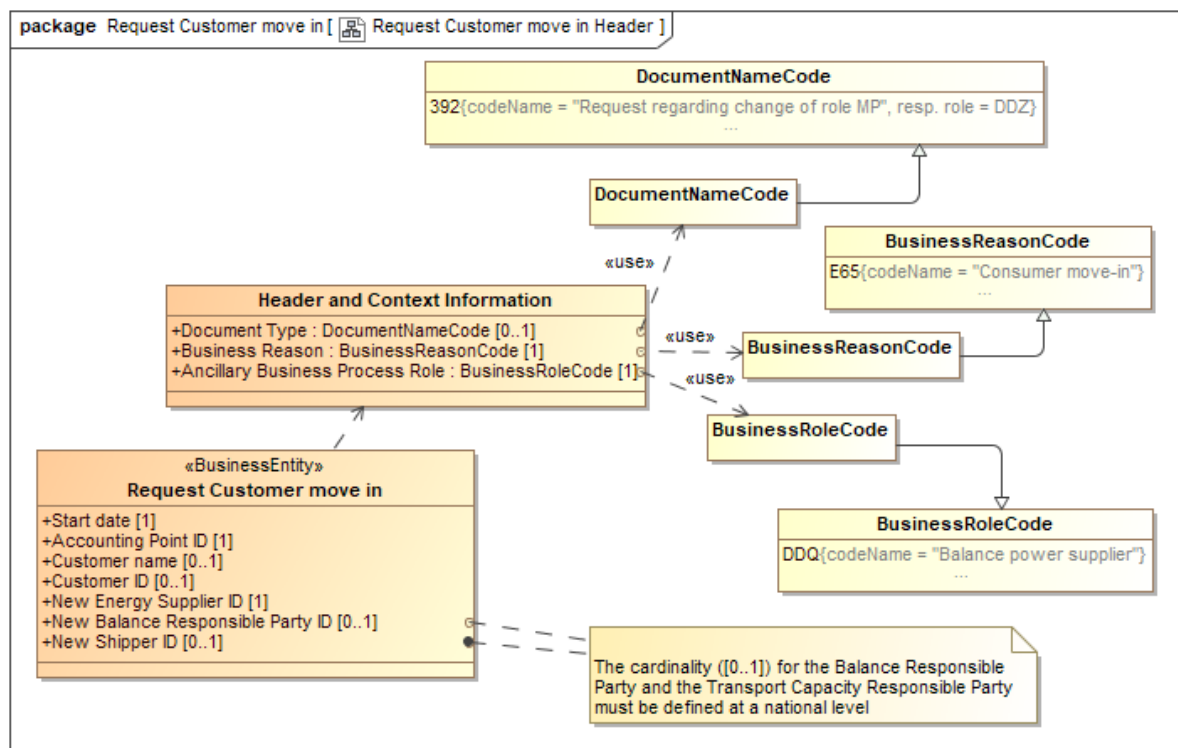


Figure 25 Class diagram: Header and Context Information: Request Customer move in

<sup>2</sup> It is assumed that Accounting Points are uniquely dedicated to either electricity or to gas.



### A.3. Confirm request Customer move in

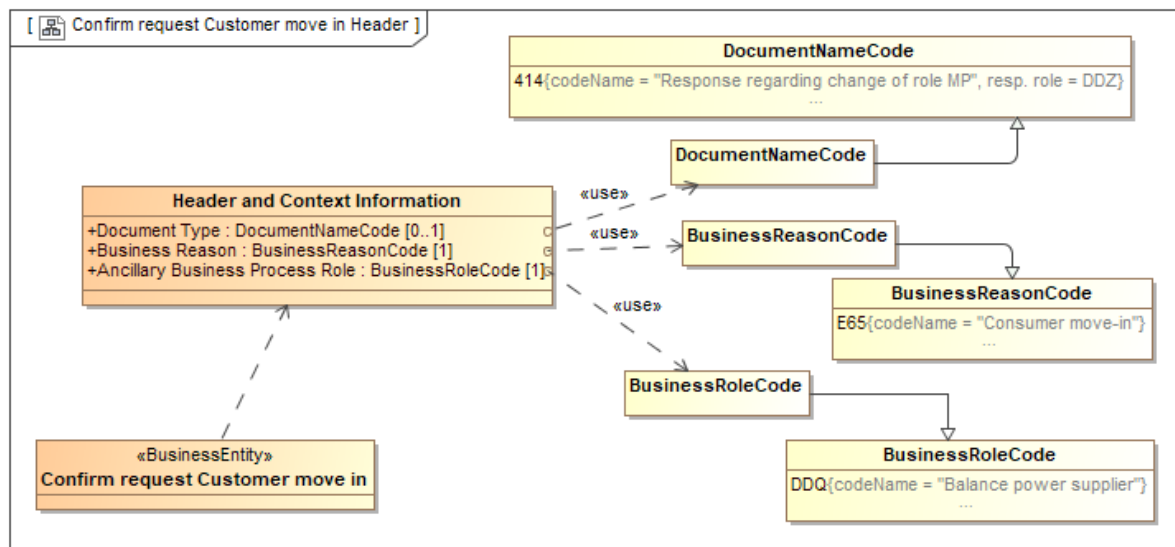


Figure 26 Class diagram: Header and Context Information: Confirm request Customer move in

### A.4. Reject request Customer move in

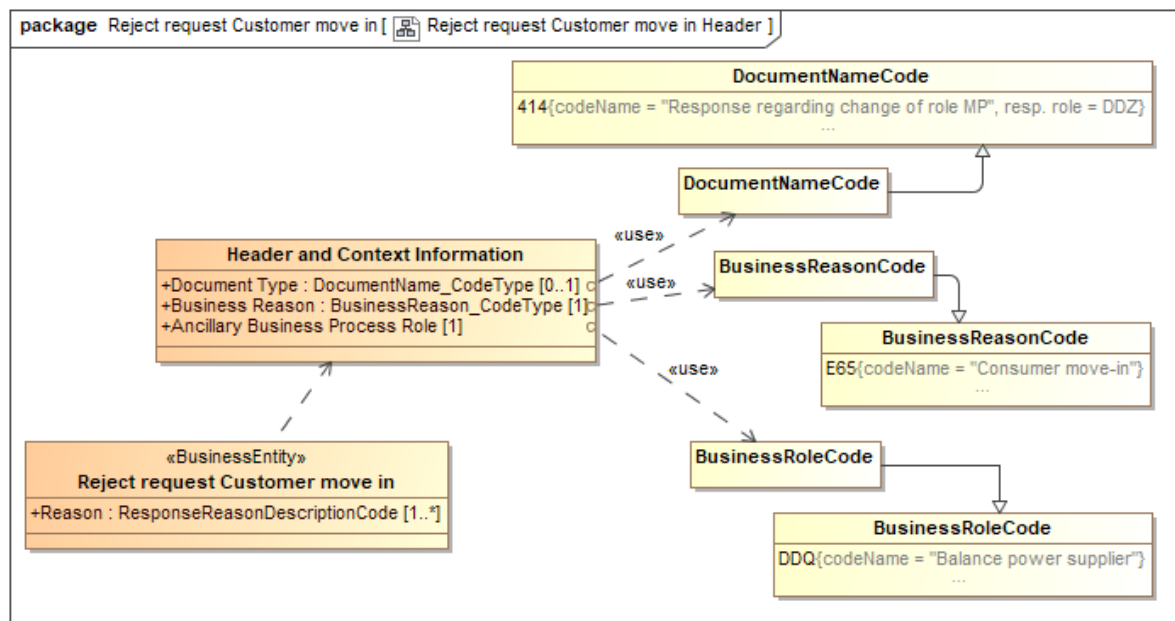


Figure 27 Class diagram: Header and Context Information: Reject request Customer move in

## A.5. Notify Customer move in to New Affected Party

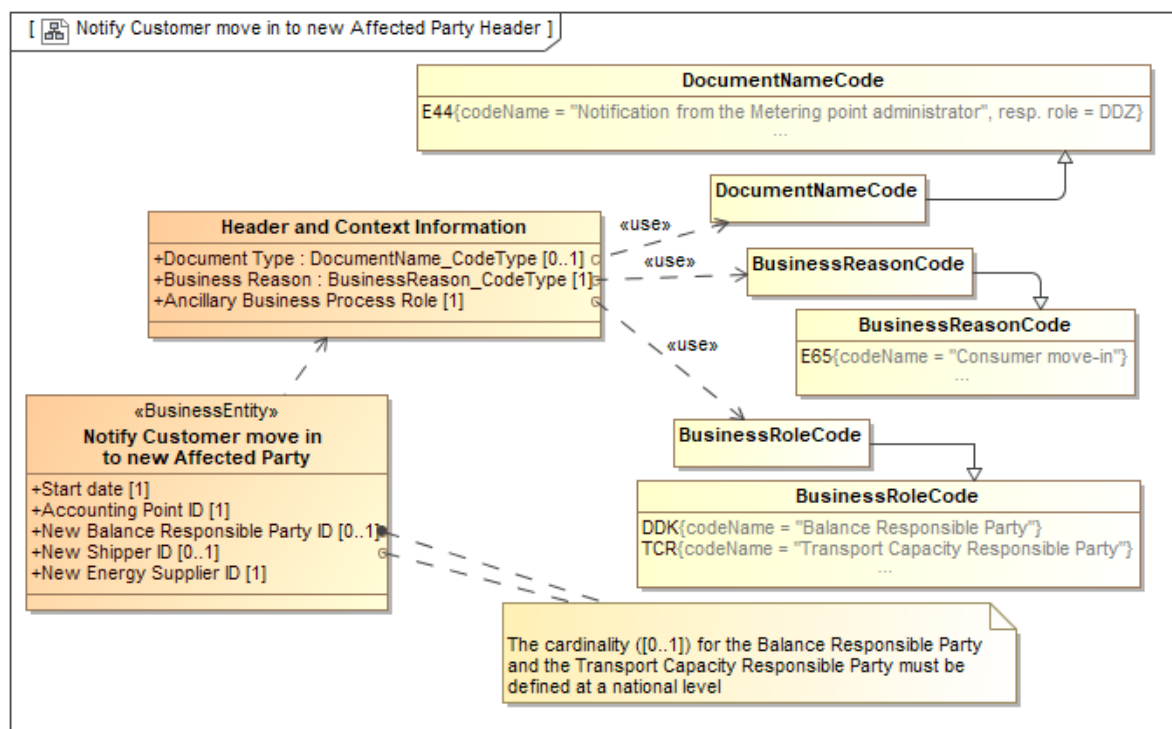


Figure 28 Class diagram: Header and Context Information: Notify Customer move-in to New Affected Party

## A.6. Notify Customer move in to Old Affected Party

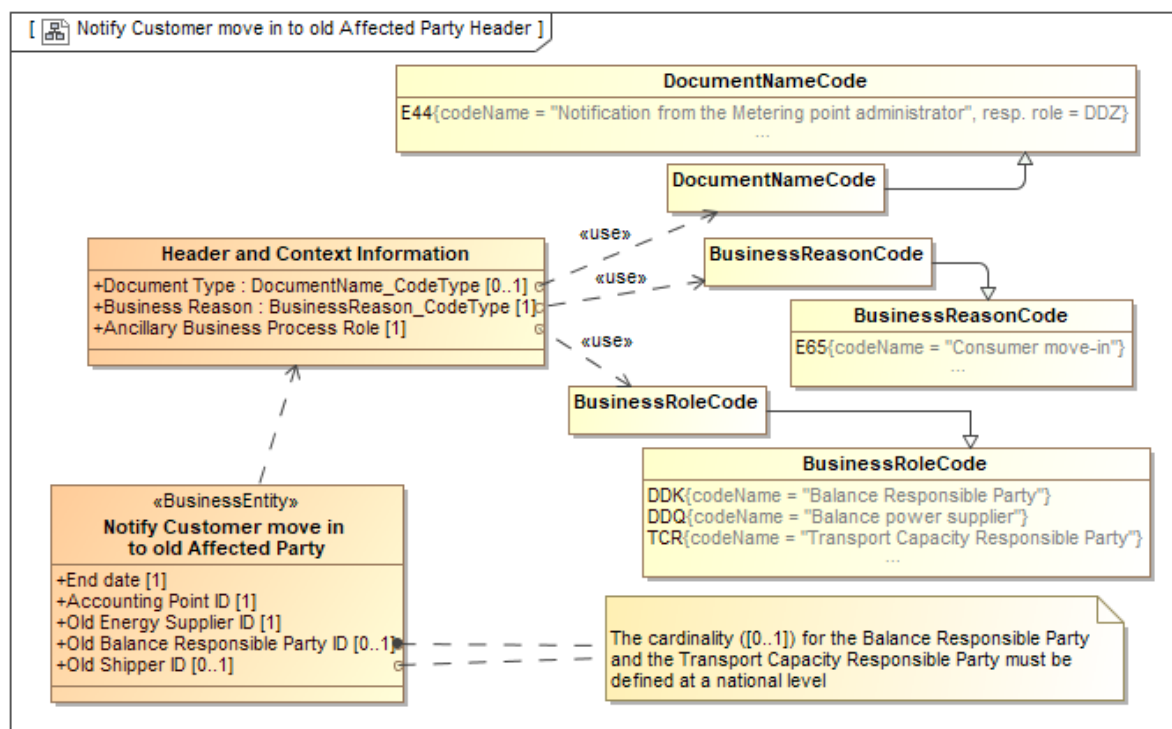


Figure 29 Class diagram: Header and Context Information: Notify Customer move-in to Old Affected Party

## A.7. Request Customer move out

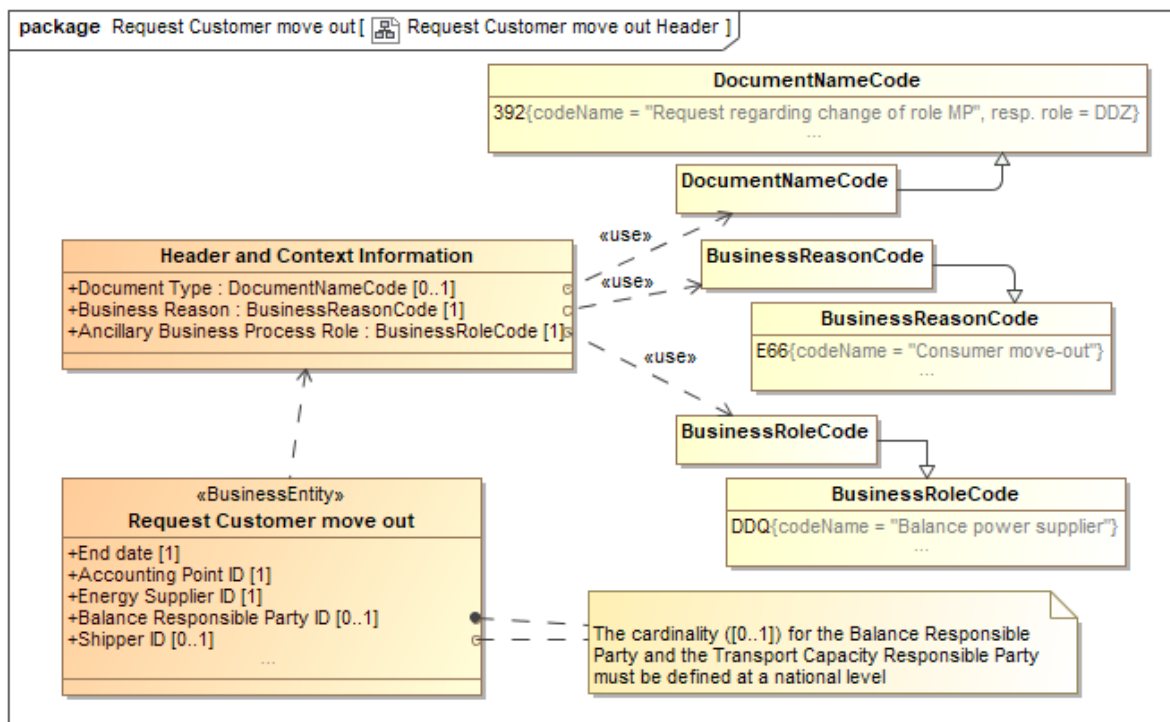


Figure 30 Class diagram: Header and Context Information: Request Customer move out

## A.8. Confirm request Customer move out

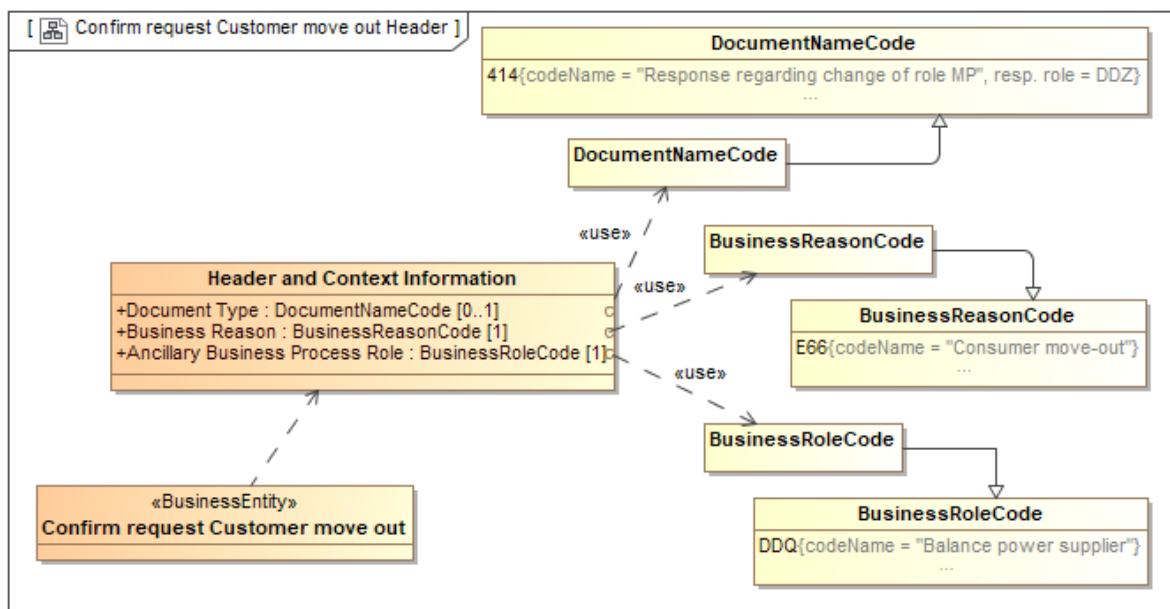


Figure 31 Class diagram: Header and Context Information: Confirm request Customer move out

## A.9. Reject request Customer move out

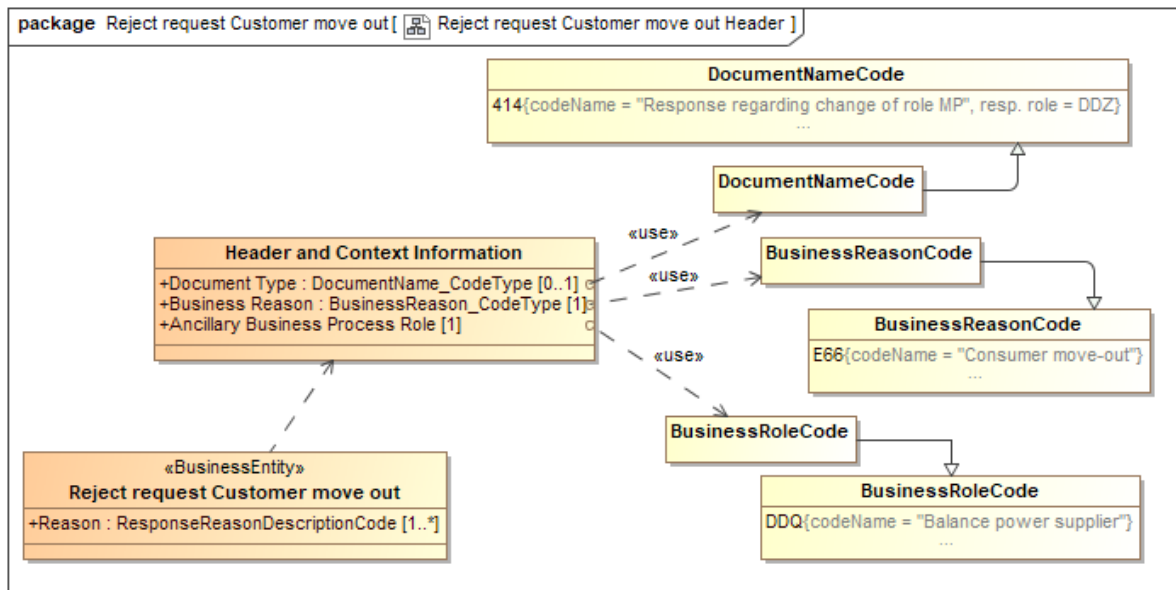


Figure 32 Class diagram: Header and Context Information: Reject request Customer move out

## A.10. Notify Customer move out

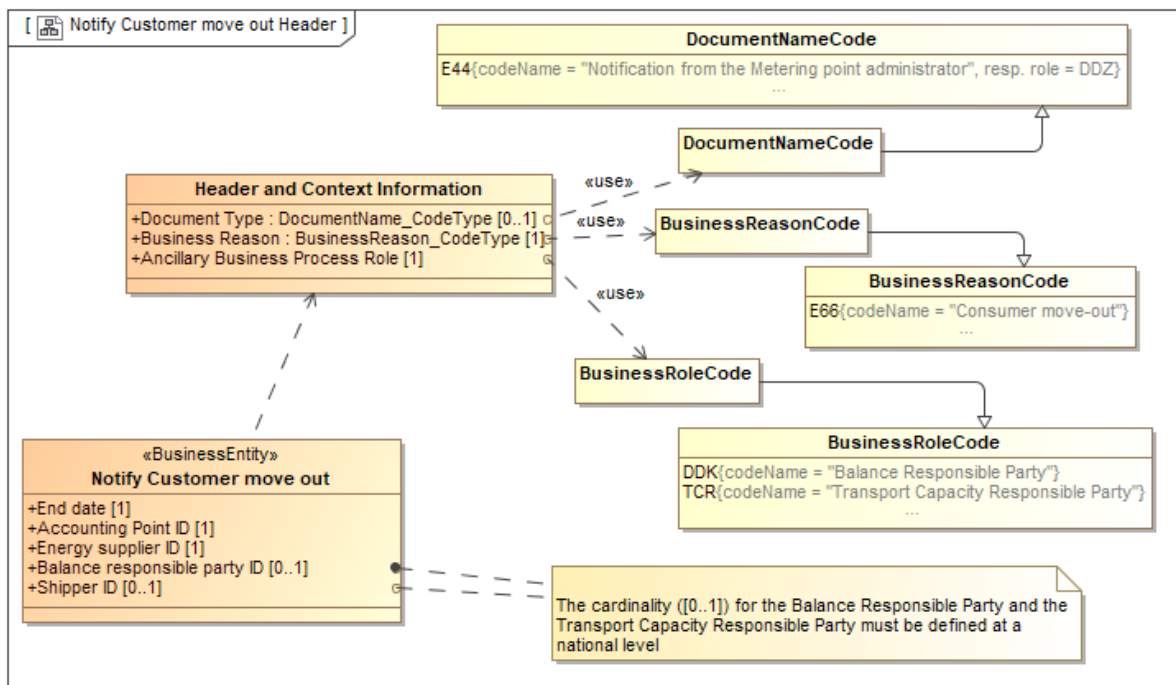


Figure 33 Class diagram: Header and Context Information: Notify Customer move out