



**Business Requirements
for
End of Metered Data
Responsible**

Status: Approved by ebIX® Forum

Version: 4.0

Revision: B

Date: August 2022

CONTENT

- A. About this document..... 3
- A.1. Comments to the ebIX® model 3
- A.2. References..... 3
- A.2.1. Standards..... 3
- A.2.2. ebIX® Documents..... 4
- A.3. Main changes since last version..... 4
- 1. Business Requirements View: End of Metered Data Responsible 5
- 1.1. End of Metered Data Responsible (Business Process UseCase) 5
- 1.1.1. Description 5
- 1.1.2. Business Process..... 6
- 1.1.3. Request end of Metered Data Responsible 7
- 1.1.3.1. Description 7
- 1.1.3.2. Business Process..... 8
- 1.1.4. Notify Accounting Point Characteristics..... 9
- 1.2. Business Partner View 10
- 1.2.1. Business Partners: End of Metered Data Responsible 10
- 1.3. Business Entity View..... 11
- 1.3.1. Short introduction 11
- 1.3.2. Request end of Metered Data Responsible (Class Diagram)..... 12
- 1.3.2.1. Element definitions: Request end of Metered Data Responsible 12
- 1.3.3. Confirm request end of Metered Data Responsible (Class Diagram) 13
- 1.3.3.1. Element definitions: Confirm request end of Metered Data Responsible 13
- 1.3.4. Reject request end of Metered Data Responsible (Class Diagram) 15
- 1.3.4.1. Element definitions: Reject request end of Metered Data Responsible 15
- Appendix A. Header and Context information for the class diagrams 17
- A.1. Header and Context Information attributes definitions 17
- A.2. Request end of Metered Data Responsible 17
- A.3. Confirm request end of Metered Data Responsible 18
- A.4. Reject request end of Metered Data Responsible 18

A. About this document

This document is a Business Requirements Specification (BRS) for End of Metered Data Responsible process within the structuring process of the European energy market. In this BRS we use business terms for the actors, and we map them to the terms used in the Harmonised Role Model from ENTSO-E, ebIX® and EFET [2].

The end of Metered Data Responsible results in the end of the Metered Data Administrator, as both roles are normally within one company as long as no hub is in use.

As a general introduction ebIX® has published a separate document “Introduction to ebIX® Business Requirements and Business Information Models” [4]. The introduction also includes the generic model elements that are not specific for a business process.

In line with UN/CEFACT Modelling Methodology version 2 (UMM-2) ebIX® defines the business requirements as the first step in modelling energy market processes. This document specifies an UMM Business Requirements View, which consist of the three sub views: Business Domain View, Business Partner View and Business Entity View.

The Business Information Model is in turn the basis for the creation of XML schema’s and is the basis for the specification of web services. The Business Information Model and the syntax specific structures are specified by the “ebIX® Technical Committee” (ETC).

Since the ebIX® model is open for national customisation, some attributes are added as optional for usage for regional/national customisation. If used, these attributes must be specified nationally.

A.1. Comments to the ebIX® model

These Business Requirements, as part of the ebIX® Model for the European Energy Market (see [4]), are made in a project with the members of EBG, see www.ebix.org. For comments to the document please contact the secretary@ebix.org.

A.2. References

A.2.1. Standards

- [1] UML Profile for UN/CEFACT’s Modelling Methodology (UMM), Base Module 2.0., (<http://www.unece.org/tradewelcome/un-centre-for-trade-facilitation-and-e-business-uncefact/outputs/technical-specifications/uncefact-modelling-methodology-umm.html>);
- [2] UML Profile for UN/CEFACT’s Modelling Methodology (UMM), Foundation Module, 2.0. (<http://www.unece.org/tradewelcome/un-centre-for-trade-facilitation-and-e-business-uncefact/outputs/technical-specifications/uncefact-modelling-methodology-umm.html>);
- [3] The Harmonized Role Model (for the Electricity Market) by ebIX®, ENTSO-E, and EFET (www.ebix.org).

A.2.2. ebIX® Documents

- [4] Introduction to ebIX® Business Requirements and Business Information Models (www.ebix.org);
- [5] Recommended Identification Schemes for the European Energy Market (www.ebix.org);
- [6] ebIX® code lists (www.ebix.org);
- [7] ebIX® Business Requirements for measure for determine meter read (www.ebix.org);
- [8] ebIX® Business Requirements for Alignment of Accounting Point Characteristics (www.ebix.org).

A.3. Main changes since last version

Old	New	Clarification	Date
Version 4.0			
3r2B	4r0A	Recast of BRS	20190502
4r0A	4r0B	<ul style="list-style-type: none"> • Harmonised the introduction with other ebIX® BRSs. • Moved Reference to requesting Transaction ID to Async Additions. • Update of roles to be in line with the ebIX®, EFET and ENTSO-E Harmonised Electricity Market Role Model version 2022-01. • Updated attribute sequence in class diagrams. • Hiding attributes from the root class in Appendix A, to make the class. 	20230815

1. Business Requirements View: End of Metered Data Responsible

1.1. End of Metered Data Responsible (Business Process UseCase)

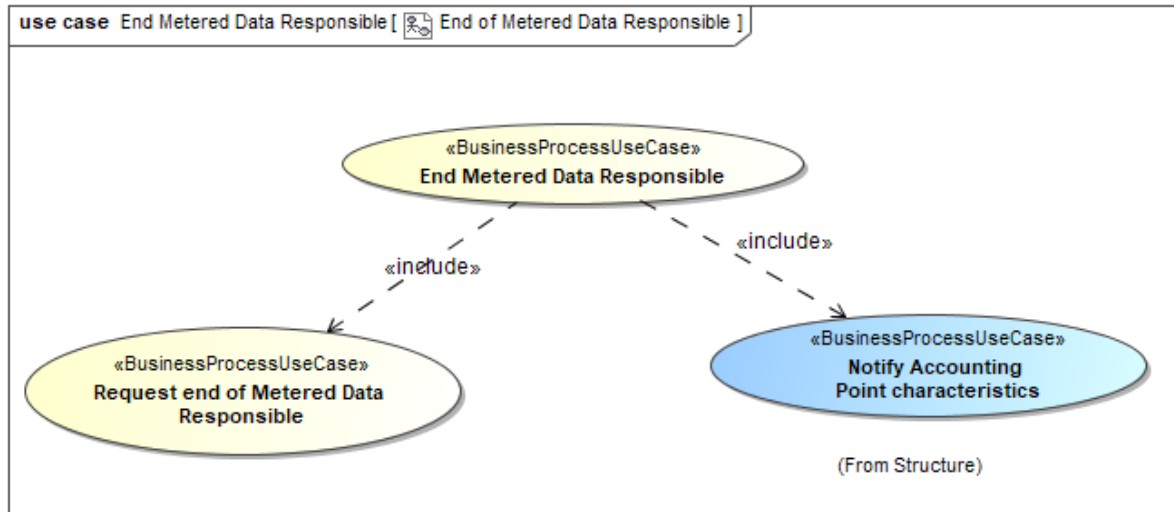


Figure 1 End of Metered Data Responsible

1.1.1. Description

UseCase description: End of Metered Data Responsible	
definition	<p>This is a process where the Metered Data Responsible requests end of its responsibility for the Accounting Point by a given date to be registered in the Metering Point administration.</p> <p>The Metering Point Administrator confirms it and makes all necessary updates for the end Metered Data Responsible, including distribution of master data for alignment of the business partner data bases.</p>
beginsWhen	When the Metered Data Responsible sends a request for end of its responsibility to the Metering Point Administrator.
preCondition	<p>The Metered Data Responsible is responsible on the considered Accounting Point.</p> <p>The Metered Data Responsible has notified the Customer of end of its responsibility.</p>
endsWhen	<p>When the requesting end of Metered Data Responsible has been confirmed.</p> <p>Master data have been distributed to Linked Parties.</p>

postCondition	The end of Metered Data Responsible is updated in the Metering Point administration and all relevant parties have aligned master data.
exceptions	<p>The request for end of Metered Data Responsible has been rejected and nothing is changed in the Metering Point administration.</p> <p>Dependent on national rules, the end of Metered Data Responsible process and the processes triggered by the end of Metered Data Responsible process (see below) may stop if a request for change of Metered Data Responsible process is started before the confirmed end date.</p> <p>The end of metered data responsibility may trigger other processes, based on national rules:</p> <ul style="list-style-type: none"> • Change of Administrative status of Accounting Point; to be set to inactive. • Physical disconnection of the Accounting Point. • Removal of meter(s).
actions	See 1.1.2

1.1.2. Business Process

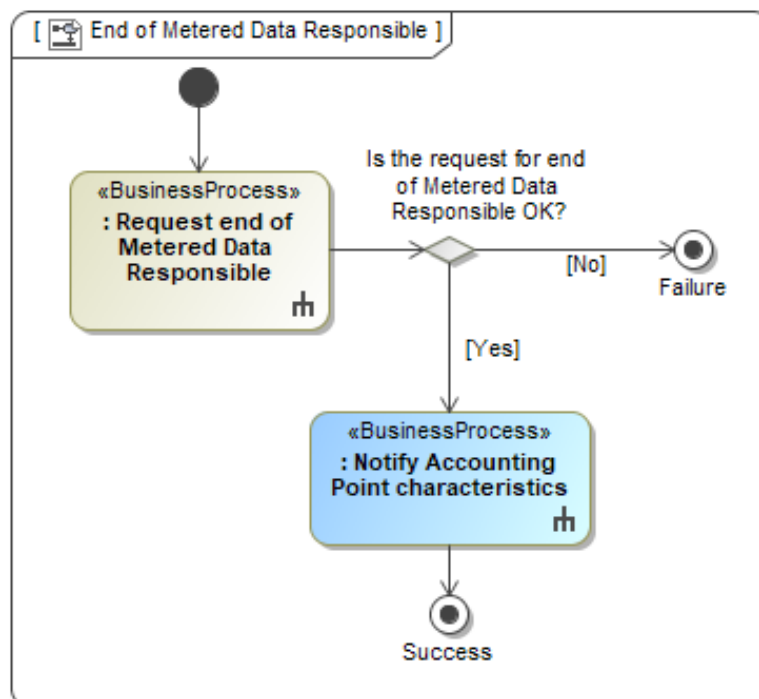


Figure 2 Business Process end of Metered Data Responsible

1.1.3. Request end of Metered Data Responsible

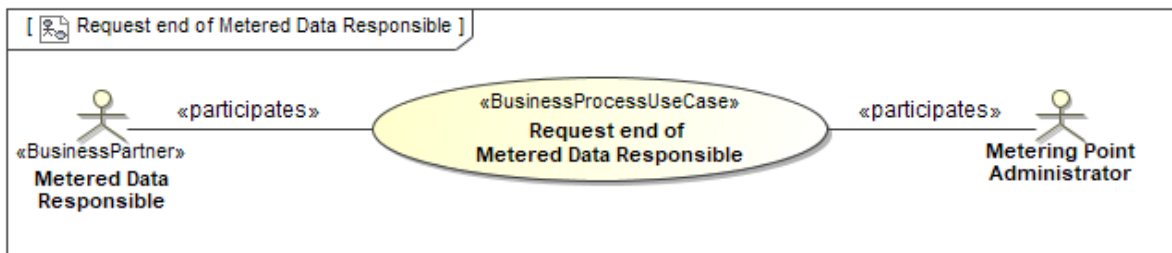


Figure 3 Request end of Metered Data Responsible

1.1.3.1. Description

UseCase description: Request end of Metered Data Responsible	
definition	The Metered Data Responsible informs the Metering Point Administrator that it is Metered Data Responsibility for the indicated Accounting Point ends per given date.
beginsWhen	When the Metered Data Responsible initiates an end of Metered Data Responsible process.
preCondition	The Metered Data Responsible is responsible for the Accounting Point.
endsWhen	When the request for end of Metered Data Responsible has been confirmed.
postCondition	The request for end of Metered Data Responsible is confirmed by the Metering Point Administrator to the Metered Data Responsible.
exceptions	The request for end of Metered Data Responsible has been rejected. National rules may link this process to other processes, such as change of meter.
actions	See 1.1.3.2

1.1.3.2. Business Process

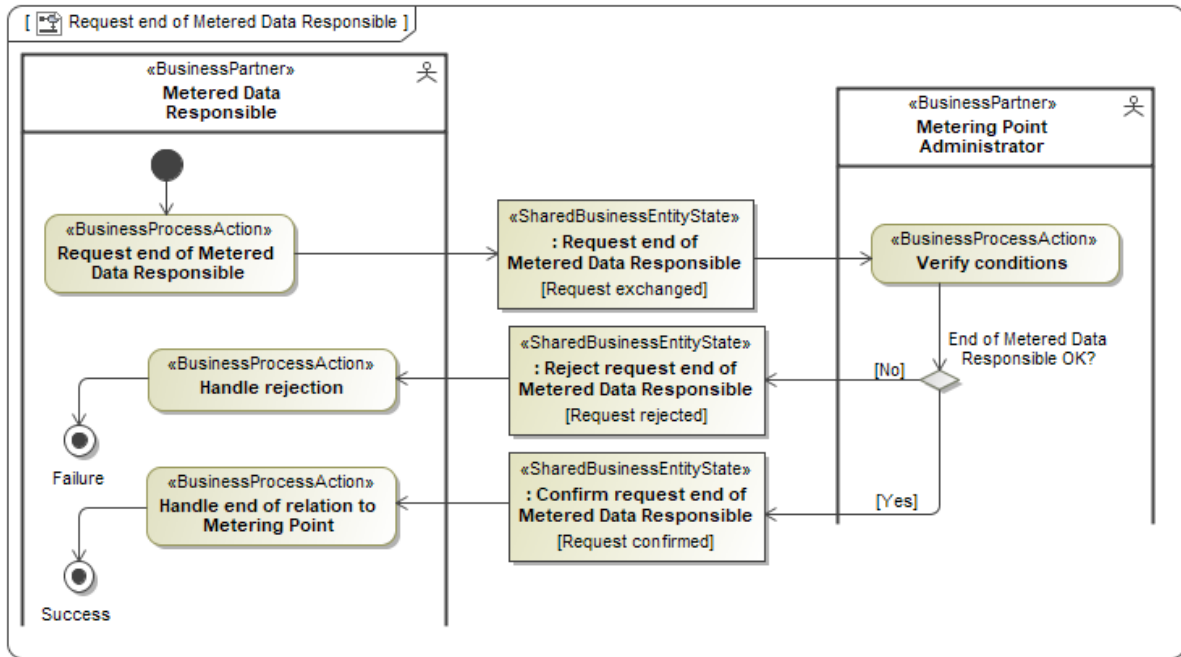


Figure 4 Request end of Metered Data Responsible

1.1.4. Notify Accounting Point Characteristics

In order for all Linked Roles to operate properly they will be notified with Accounting Point characteristics. *Notify Accounting Point Characteristics* is documented in a separate BRS, see [8]. In that BRS (Alignment of Accounting Point Characteristics), the “Linked Roles” are specified.

1.2. Business Partner View

1.2.1. Business Partners: End of Metered Data Responsible

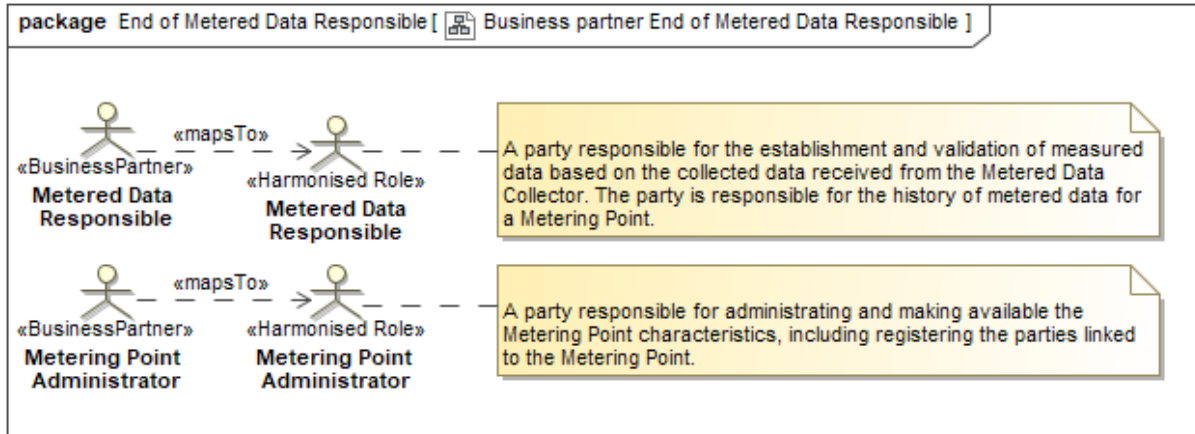


Figure 5 Business Partner: End of Metered Data Responsible

1.3. Business Entity View

1.3.1. Short introduction

A general introduction to the Business Data View can be found in the Introduction to ebIX® Business Requirements and Business Information Models (www.ebix.org), [4].

1.3.2. Request end of Metered Data Responsible (Class Diagram)

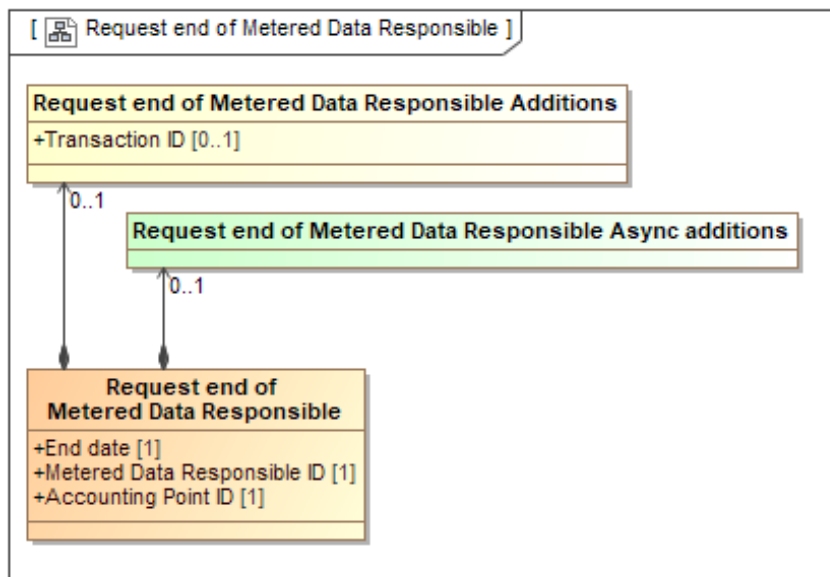


Figure 6 Request end of Metered Data Responsible

1.3.2.1. Element definitions: Request end of Metered Data Responsible

«Business entity» Request end of Metered Data Responsible	The information set sent by a Metered Data Responsible to the Metering Point Administrator when requesting end of Metered Data Responsible.
End date	The date from which the Metered Data Responsible requests to end the metered data responsibility for this Accounting Point.
Metered Data Responsible ID	The unique identification of the requesting Metered Data Responsible.
Accounting Point ID	The unique identification of the Accounting Point the end of Metered Data Responsible is intended for.
Request end of Metered Data Responsible Additions	Additional information related to request for end of Metered Data Responsible, to be agreed on a national level.
Transaction ID	The unique identification of this set of information given by the requesting Metered Data Responsible.
Request end of Metered Data Responsible Async Additions	Additional information, related to end of Metered Data Responsible, needed when using asynchronous communication, however not used in this request.

1.3.3. Confirm request end of Metered Data Responsible (Class Diagram)

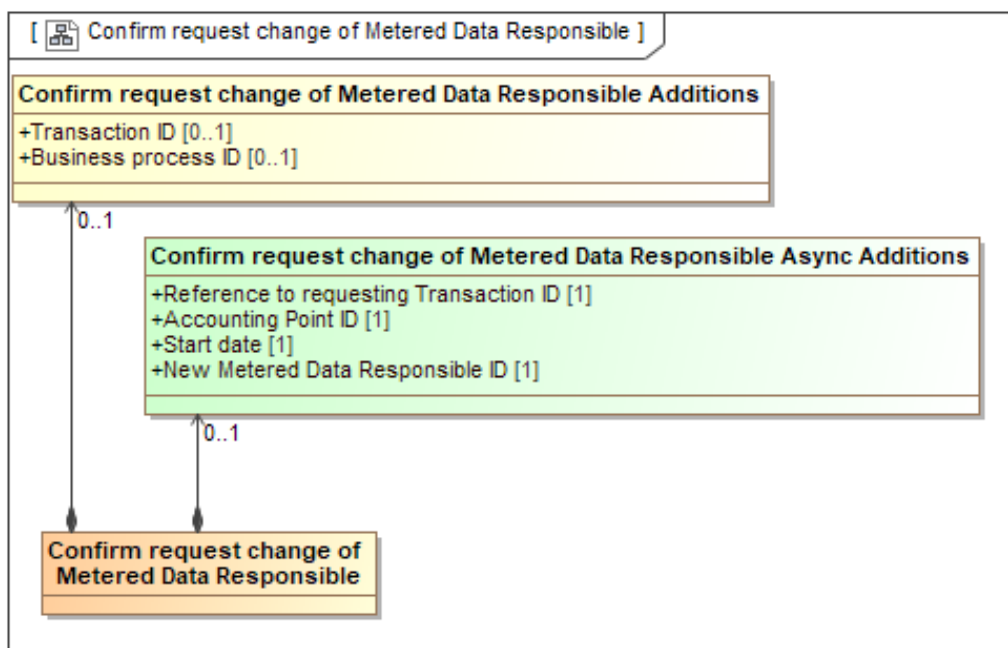


Figure 7 Confirm request end of Metered Data Responsible

1.3.3.1. Element definitions: Confirm request end of Metered Data Responsible

«Business entity» Confirm request end of Metered Data Responsible	The information set sent by the Accounting Point Administrator to the requesting Metered Data Responsible to confirm this end of Metered Data Responsible.
Confirm request end of Metered Data Responsible Additions	Information related to confirmation of end of Metered Data Responsible, to be agreed on a national level.
Transaction ID	The unique identification of this set of information given by the requesting Metered Data Responsible.
Business process ID	The unique identification, given by the Metering Point Administrator, of this requested end of Metered Data Responsible process that this response is a part of.
Confirm request end of Metered Data Responsible Async Additions	Information related to the confirmation of end of Metered Data Responsible, needed when using an asynchronous communication.
Reference to requesting Transaction ID	The Transaction ID from the request.
End date	The confirmed requested date from when the Metered Data Responsible no longer is responsible this Accounting Point.

Metered Data Responsible ID	The unique identification of the Metered Data Responsible that from the end-date no longer will be metered data responsible for the Accounting Point.
Accounting Point ID	The unique identification of the Accounting Point this end of Metered Data Responsible is confirmed for.

1.3.4. Reject request end of Metered Data Responsible (Class Diagram)

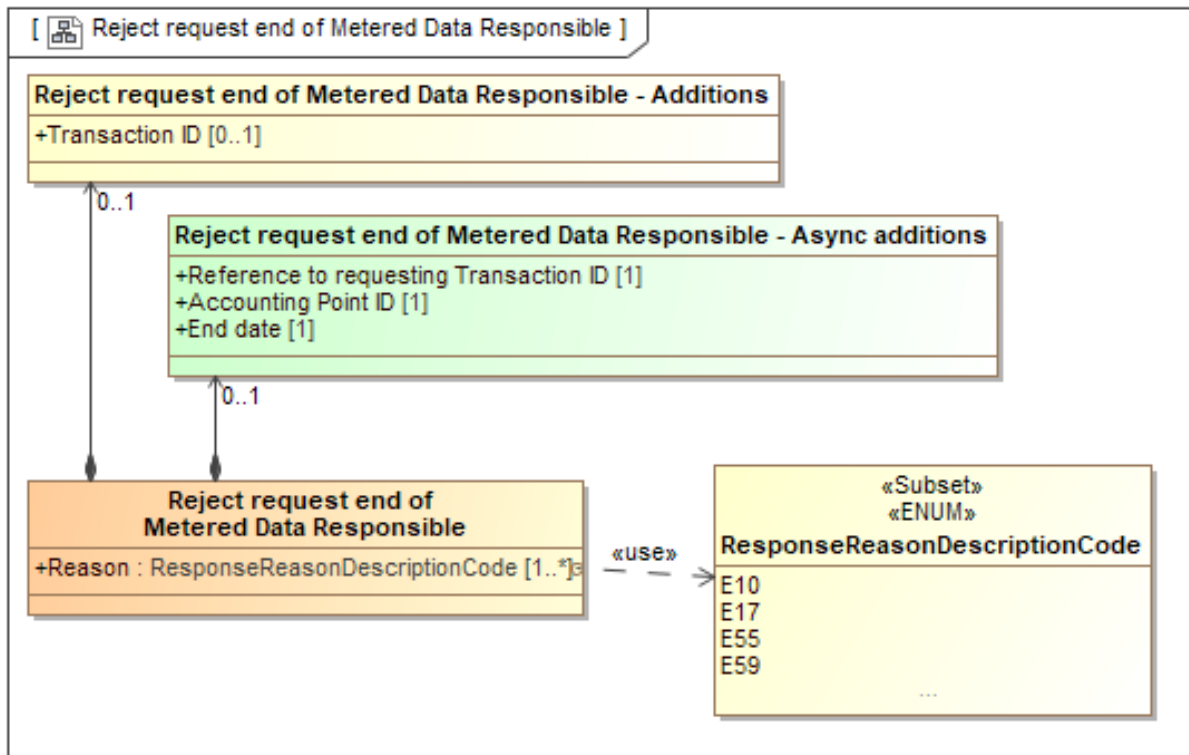


Figure 8 Reject request end of Metered Data Responsible

1.3.4.1. Element definitions: Reject request end of Metered Data Responsible

«Business entity» Reject request end of Metered Data Responsible	The information set sent by the Accounting Point Administrator the requesting Metered Data Responsible to reject this end of Metered Data Responsible.
Reason	A code specifying the reason for the rejection of the requested end of Metered Data Responsible.
Reject request end of Metered Data Responsible Additions	Information related to rejection of end of Metered Data Responsible, to be agreed on a national level.
Transaction ID	The unique identification of this set of information given by the Metering Point Administrator.
Reject request end of Metered Data Responsible Async Additions	Additional information, related to the end of Metered Data Responsible, needed when using asynchronous communication.
Reference to requesting Transaction ID	The Transaction ID from the request given by the requesting Metered Data Responsible.

Accounting Point ID	The unique identification of the Accounting Point the end of Metered Data Responsible is rejected for.
End date	The requested date, for this end of Metered Data Responsible that is rejected.

Appendix A. Header and Context information for the class diagrams

A.1. Header and Context Information attributes definitions

Class/attribute	Sector ¹	Description
Header and Context Information		The set of information specifying the information to be added to this payload to enable the exchange as a document.
Document Type		A code representing the document type used for the exchange of this set of information.
Business Reason		A code representing the business reason for the exchange of this set of information.
Ancillary Business Process Role		A code representing the market role taking part in this exchange together with the Responsible Role, responsible for the process/this exchange.

A.2. Request end of Metered Data Responsible

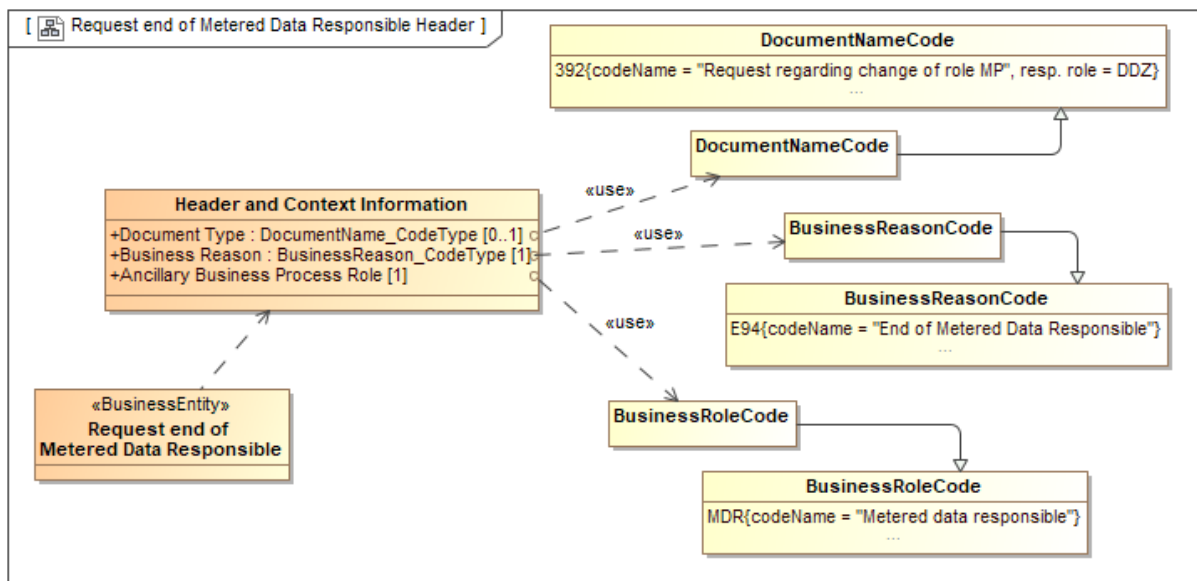


Figure 9 Class diagram: Header and Context Information Request end of Metered Data Responsible

¹ It is assumed that Accounting Points are uniquely dedicated to either electricity or to gas.

A.3. Confirm request end of Metered Data Responsible

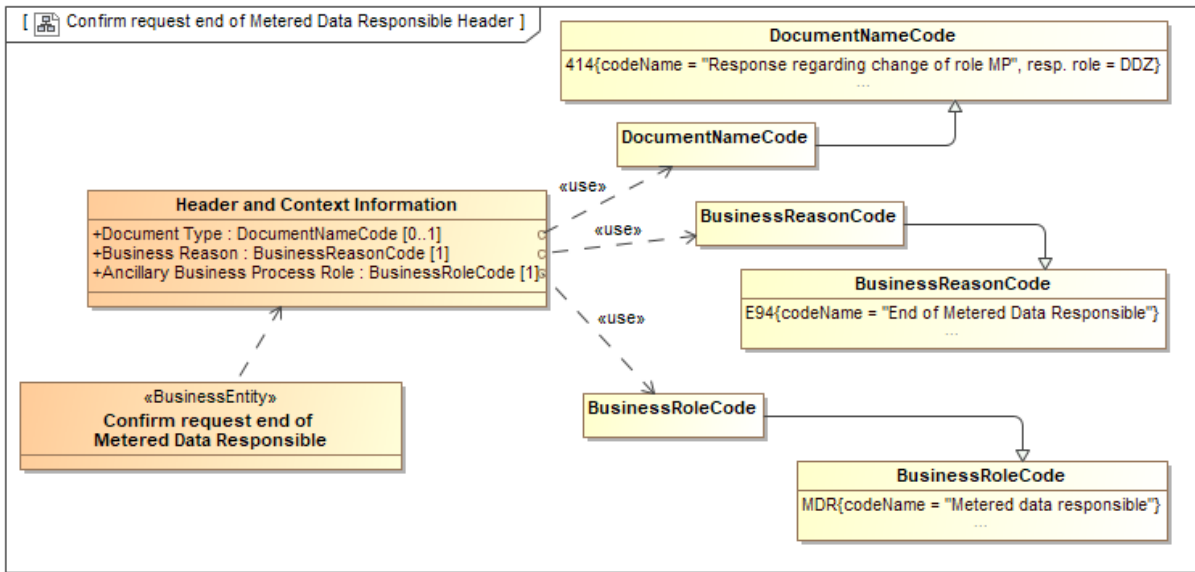


Figure 10 Class diagram: Header and Context Information Confirm request end of Metered Data Responsible

A.4. Reject request end of Metered Data Responsible

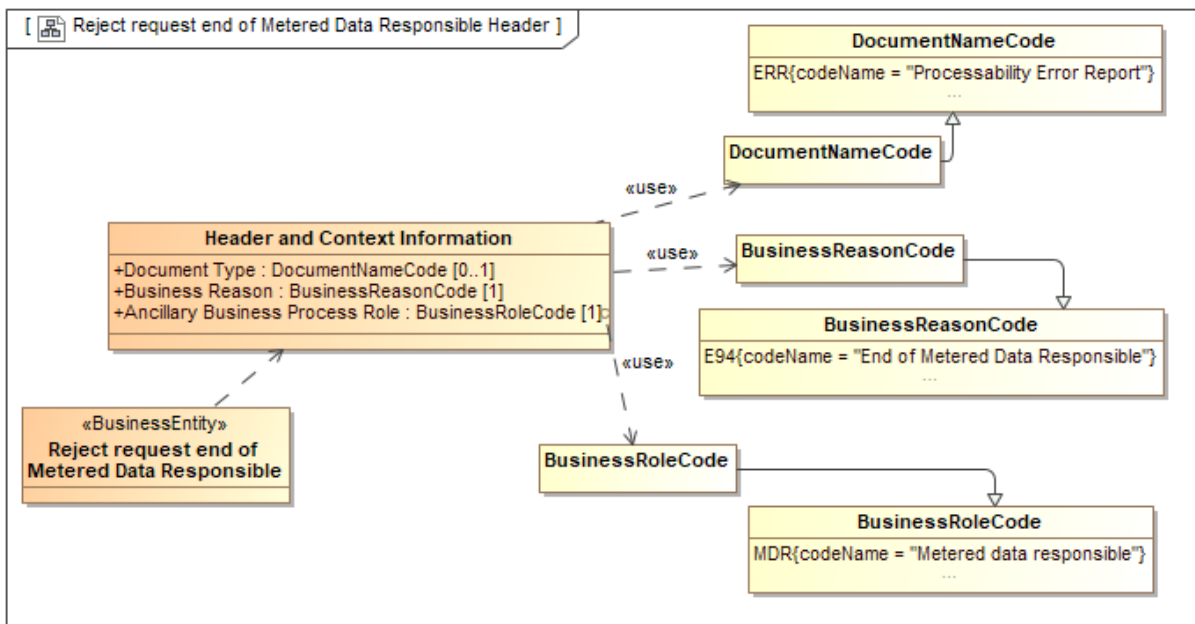


Figure 11 Class diagram: Header and Context Information Reject request end of Metered Data Responsible