



**Business Requirements
for**

End of Supply

**A process area within the European
energy market structuring process**

Status: Approved by ebIX® Forum
Version: 4.0
Revision: B
Date: August 2023

CONTENT

- A. About this document..... 4
 - A.1. Comments to the ebIX® model 4
 - A.2. References..... 4
 - A.2.1. Standards..... 4
 - A.2.2. ebIX® Documents..... 5
 - A.3. Main changes since last version 5
- 1. Business Requirements View: End of supply..... 6
 - 1.1. End of supply (Business Process UseCase) 6
 - 1.1.1. Description 6
 - 1.1.2. Business Process..... 7
 - 1.1.3. Request end of supply 8
 - 1.1.3.1. Description 8
 - 1.1.3.2. Business Process..... 9
 - 1.1.4. Notify end of supply (Business Process UseCase) 10
 - 1.1.4.1. Description 10
 - 1.1.4.2. Business Process..... 11
 - 1.1.5. Notify Accounting Point Characteristics..... 12
 - 1.1.6. Determine Meter Read..... 12
 - 1.2. Business Partner View 13
 - 1.2.1. Business Partners for end of supply 13
 - 1.3. Business Entity View..... 14
 - 1.3.1. Request end of supply (Class Diagram) 15
 - 1.3.1.1. Element definitions: Request end of supply 15
 - 1.3.2. Confirm request end of supply (Class Diagram)..... 16
 - 1.3.2.1. Element definitions: Confirm request end of supply 16
 - 1.3.3. Reject request end of supply (Class Diagram)..... 18
 - 1.3.3.1. Element definitions: Reject request end of supply 18

- 1.3.4. Notify end of supply (Class Diagram) 19
 - 1.3.4.1. Element definitions: Notify end of supply..... 19
- Appendix A. Header and Context information for the class diagrams 20
 - A.1. Header and Context Information attributes definitions 20
 - A.2. Request end of supply 20
 - A.3. Confirm request end of supply..... 21
 - A.4. Reject request end of supply..... 21
 - A.5. Notify end of supply 22

A. About this document

This document is a Business Requirements Specification (BRS) for End of supply process within the structuring process of the European energy market. In this BRS we use business terms for the actors, and we map them to the terms used in the Harmonised Role Model from ENTSO-E, ebIX® and EFET [2].

As a general introduction ebIX® has published a separate document “Introduction to ebIX® Business Requirements and Business Information Models” [4]. The introduction also includes the generic model elements that are not specific for a business process.

In line with UN/CEFACT Modelling Methodology version 2 (UMM-2) ebIX® defines the business requirements as the first step in modelling energy market processes. This document specifies an UMM Business Requirements View, which consist of the three sub views: Business Domain View, Business Partner View and Business Entity View.

The Business Information Model is in turn the basis for the creation of XML schema’s and is the basis for the specification of web services. The Business Information Model and the syntax specific structures are specified by the “ebIX® Technical Committee” (ETC).

Since the ebIX® model is open for national customisation, some attributes are added as optional for usage for regional/national customisation. If used, these attributes must be specified nationally.

A.1. Comments to the ebIX® model

These Business Requirements, as part of the ebIX® Model for the European Energy Market (see [4]), are made in a project with the members of EBG, see www.ebix.org. For comments to the document please contact the secretary@ebix.org.

A.2. References

A.2.1. Standards

- [1] UML Profile for UN/CEFACT’s Modelling Methodology (UMM), Base Module 2.0., (<http://www.unece.org/tradewelcome/un-centre-for-trade-facilitation-and-e-business-uncefact/outputs/technical-specifications/uncefact-modelling-methodology-umm.html>);
- [2] UML Profile for UN/CEFACT’s Modelling Methodology (UMM), Foundation Module, 2.0. (<http://www.unece.org/tradewelcome/un-centre-for-trade-facilitation-and-e-business-uncefact/outputs/technical-specifications/uncefact-modelling-methodology-umm.html>);
- [3] The Harmonized Role Model (for the Electricity Market) by ebIX®, ENTSO-E, and EFET (www.ebix.org).

A.2.2. ebIX® Documents

- [4] Introduction to ebIX® Business Requirements and Business Information Models (www.ebix.org).
- [5] Recommended Identification Schemes for the European Energy Market (www.ebix.org);
- [6] ebIX® code lists (www.ebix.org);
- [7] ebIX® Business Requirements for measure for determine meter read (www.ebix.org);
- [8] ebIX® Business Requirements for Alignment of Accounting Point Characteristics (www.ebix.org).

A.3. Main changes since last version

Old	New	Clarification	Date
Version 4.0			
3.2.B	4.0.A	Recast of BRS	20190502
4.0.A	4.0.B	<ul style="list-style-type: none"> • Harmonised the introduction with other ebIX® BRSs. • Moved Reference to requesting Transaction ID to Async Additions. • Update of roles to be in line with the ebIX®, EFET and ENTSO-E Harmonised Electricity Market Role Model version 2022-01. • Hiding attributes from the root class in Appendix A, to make the class. • Correction of spelling errors. 	20230815

1. Business Requirements View: End of supply

1.1. End of supply (Business Process UseCase)

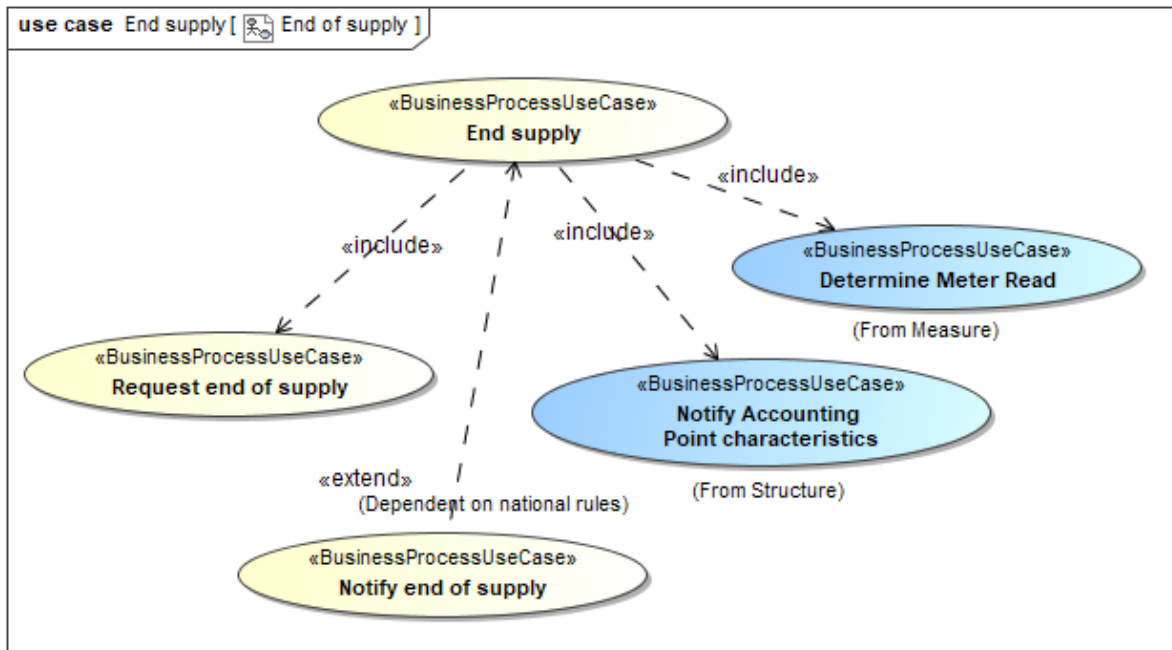


Figure 1 End of supply

1.1.1. Description

UseCase description: End of supply	
definition	<p>This is a process where the Energy Supplier requests end of supply to be registered by a given date at the Accounting Point in the Metering Point register.</p> <p>The Metering Point Administrator makes all necessary updates for the end of supply, including distribution of master data for alignment of the business partner data bases.</p>
beginsWhen	When the Energy Supplier sends a request for end of supply to the Metering Point Administrator.
preCondition	<p>The Energy Supplier has notified the Customer that the contract between them will be ended and the end of supply process will be initiated.</p> <p>The end process should be within the rules of the legislation.</p>
endsWhen	<p>When the request end of supply has been confirmed and:</p> <ul style="list-style-type: none"> • Relevant parties have been informed about the end of supply; • Master data have been distributed to relevant parties; • End meter reading has been determined.

postCondition	The Balance Responsible Party has given notice to terminate the contract with the Customer and all involved parties have exchanged and synchronised their master data with the Metering Point register.
exceptions	<p>Dependent on national rules, the end of supply process and the processes triggered by the end of supply process (see below) may stop if a request for change of Supplier or a Customer move In process is started before the confirmed end of supply date.</p> <p>The end of supply process may trigger other processes, based on national rules:</p> <ul style="list-style-type: none"> • Change of Administrative status of Accounting Point; to be set to inactive; • Change to supplier of last resort or default supplier; • Physical closure of the Accounting Point. <p>The request end of supply has been rejected by the Metering Point Administrator and nothing is changed in the Metering Point register.</p>
actions	See 1.1.2

1.1.2. Business Process

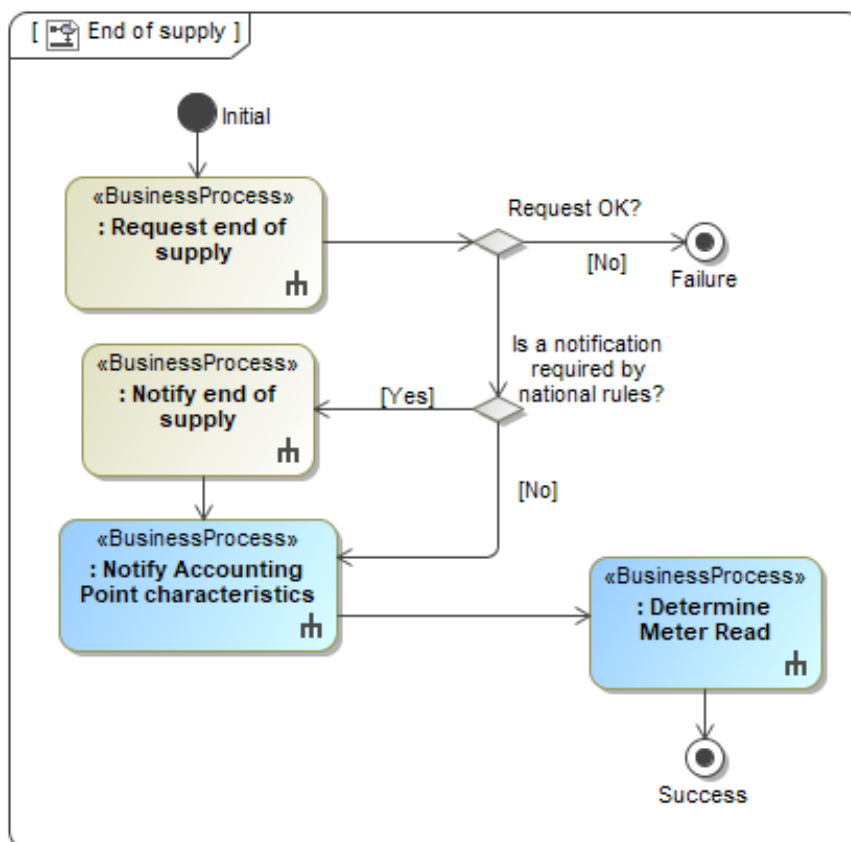


Figure 2 Business Process: End of supply

1.1.3. Request end of supply

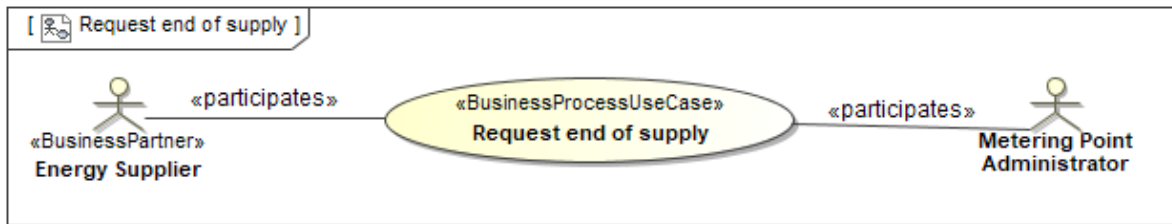


Figure 3 Request end of supply

1.1.3.1. Description

UseCase description: Request end of supply	
definition	<p>In this process, the Energy Supplier will request an end of supply and the Metering Point Administrator confirms.</p> <p>During the business process, an end of supply is confirmed, and the Metering Point register is updated.</p> <p>In this model, it is assumed that the Metering Point Administrator cannot change the end date in the confirmation.</p>
beginsWhen	When the Energy Supplier sends a request for end of supply.
preCondition	<ul style="list-style-type: none"> Accounting Point ID is known; Existing supply contract is in place; An end of supply date has been decided by the Energy Supplier.
endsWhen	When the request for end of supply is confirmed.
postCondition	The request for end of supply from the Energy Supplier has been confirmed by the Metering Point Administrator.
exceptions	The request for end of supply from the Energy Supplier has been rejected by the Metering Point Administrator.
actions	See 1.1.3.2

1.1.3.2. Business Process

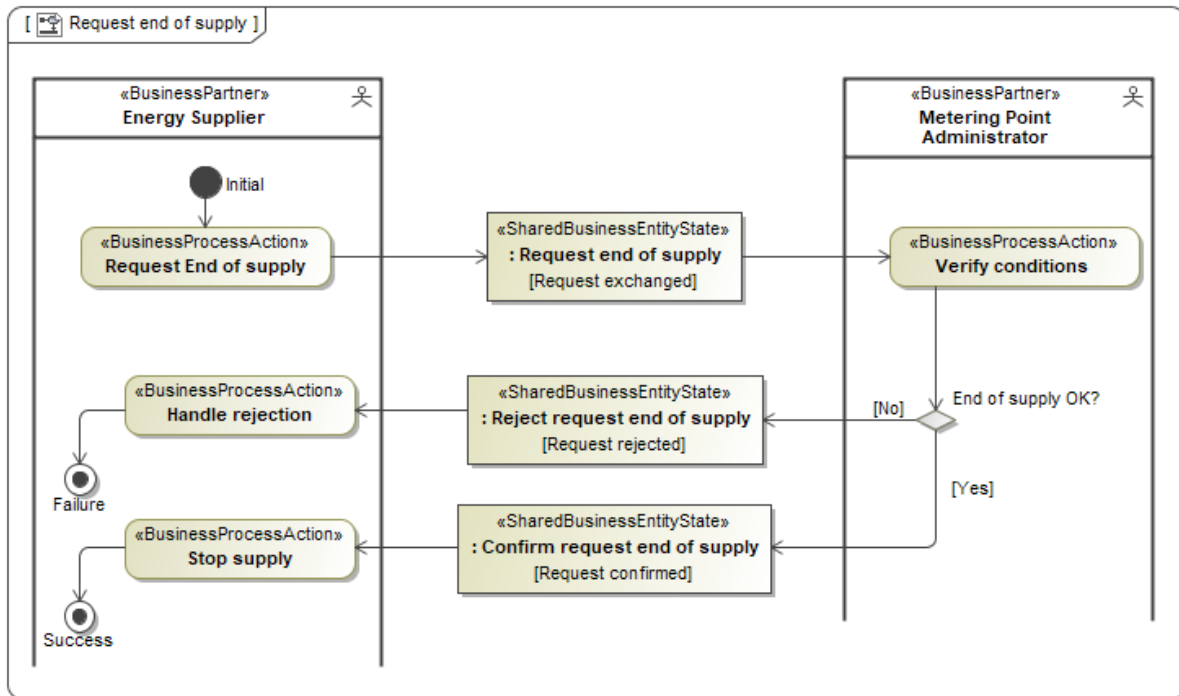


Figure 4 Request end of supply

1.1.4. Notify end of supply (Business Process UseCase)

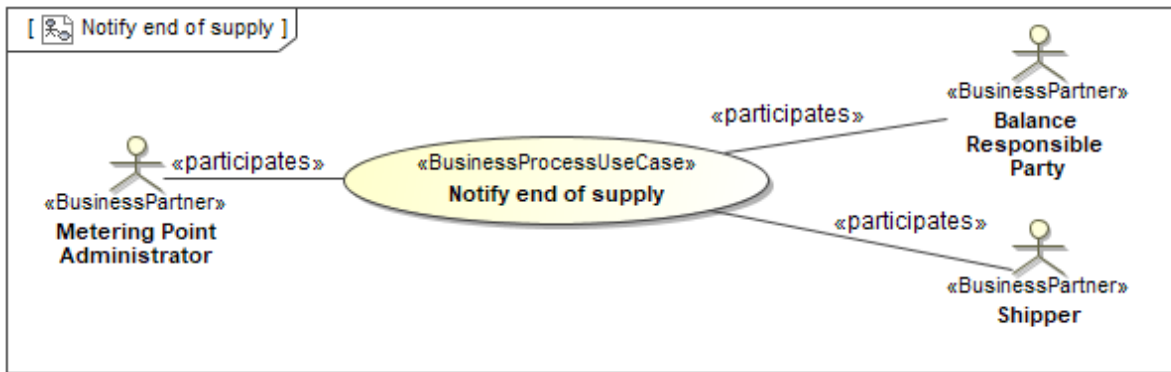


Figure 5 Notify end of supply

1.1.4.1. Description

UseCase description: Notify end of supply	
definition	In this process the Metering Point Administrator will notify the Balance Responsible Party or the Shipper of the end of supply in the Accounting Point and the related end date.
beginsWhen	When the end of supply has been confirmed by the Metering Point Administrator, however defined by national rules.
preCondition	<ul style="list-style-type: none"> The related request for end of supply process has been confirmed; The Metering Point register has been updated with the end of supply.
endsWhen	When the Balance Responsible Party or the Shipper has been informed of the end of supply in the Accounting Point and the related end date.
postCondition	The end of supply has been notified from the Metering Point Administrator to the Balance Responsible Party or the Shipper.
exceptions	The process is only run if required by national rules.
actions	See 1.1.4.2

1.1.4.2. Business Process

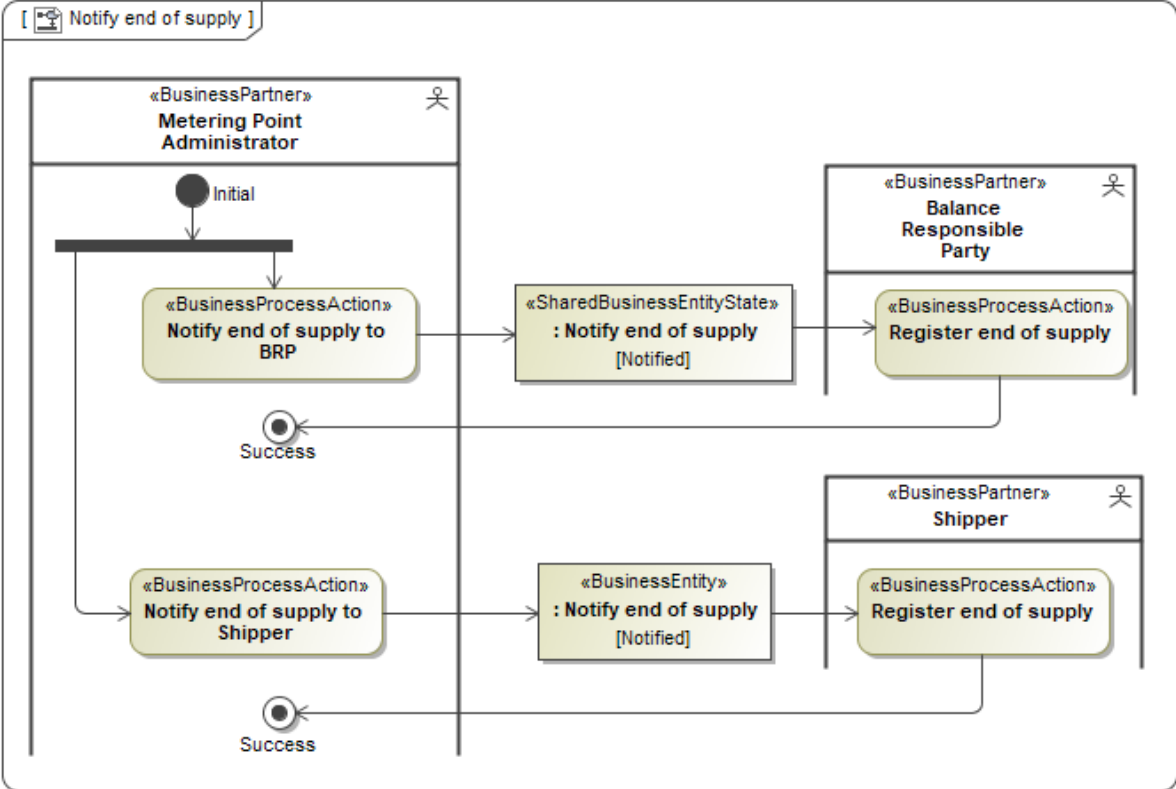


Figure 6 Notify end of supply

1.1.5. Notify Accounting Point Characteristics

In order for all Linked Roles to operate properly they will be notified with Accounting Point characteristics. *Notify Accounting Point Characteristics* is documented in a separate BRS, see [8]. In that BRS (Alignment of Accounting Point Characteristics), the “Linked Roles” are specified.

1.1.6. Determine Meter Read

The Process Area Determine Meter Read is documented in the ebIX® model Measure [7].

1.2. Business Partner View

1.2.1. Business Partners for end of supply

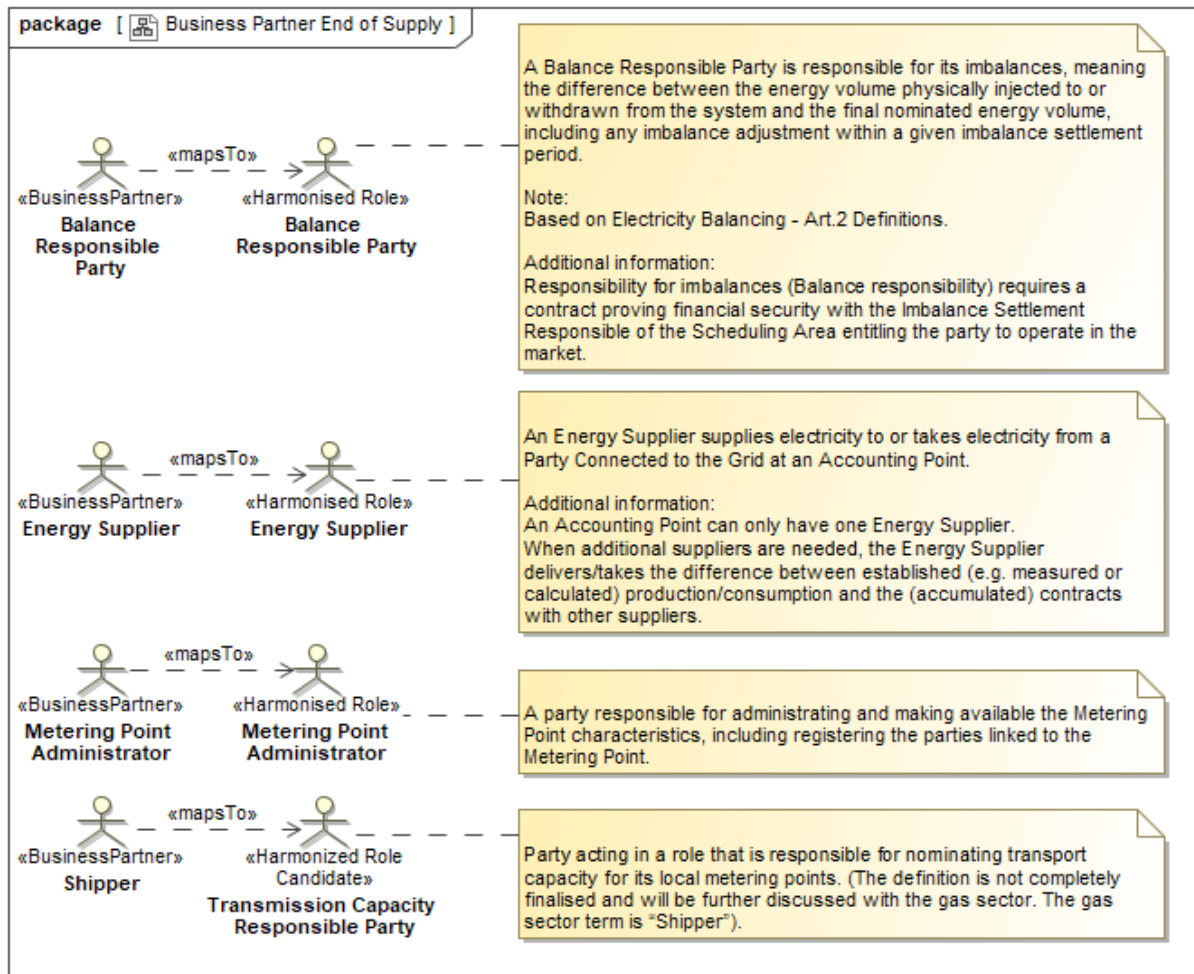


Figure 7 Business Partners for end of supply

1.3. Business Entity View

A general introduction to the Business Entity View can be found in the Introduction to ebIX® Business Requirements and Business Information Models (www.ebix.org), [4].

1.3.1. Request end of supply (Class Diagram)

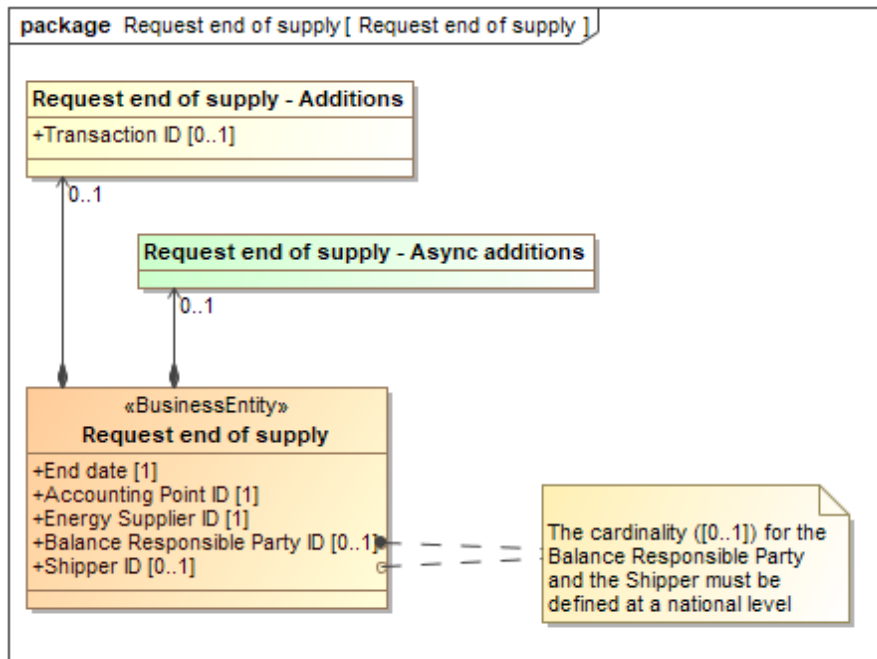


Figure 8 Request end of supply

1.3.1.1. Element definitions: Request end of supply

«Business entity» Request end of supply	The information set sent by an Energy Supplier to the Metering Point Administrator when requesting end of supply.
End date	The date from when the Energy Supplier requests to end supply for this Accounting Point.
Accounting Point ID	The unique identification of the Accounting Point.
Energy Supplier ID	The unique identification of the requesting Energy Supplier.
Balance Responsible Party ID	The unique identification of the Balance Responsible Party that no longer will be balance responsible for this Accounting Point.
Shipper ID	The unique identification of the Shipper that no longer will be Shipper for this Accounting Point.
Request end of supply Additions	Additional information related to the request for end of supply, to be agreed on a national level.
Transaction ID	The unique identification of this set of information given by the requesting Energy Supplier.
Request end of supply Async Additions	Additional information related to end of supply, needed when using asynchronous communication, however not used in this request.

1.3.2. Confirm request end of supply (Class Diagram)

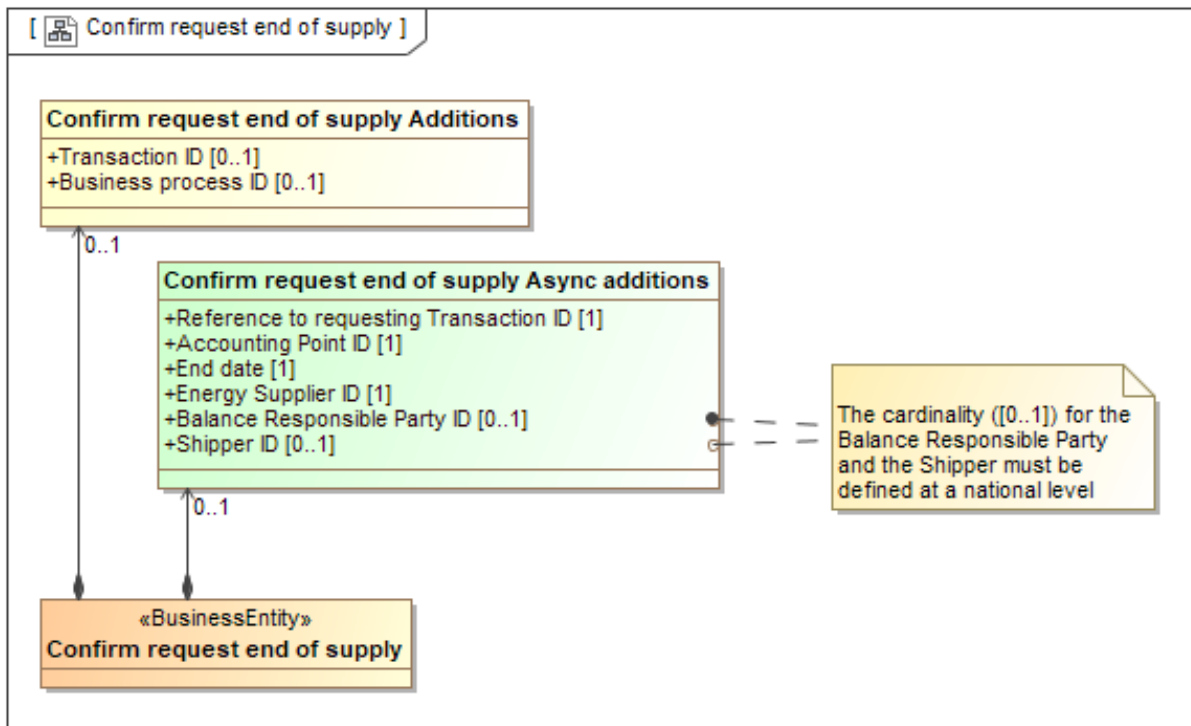


Figure 9 Confirm request end of supply

1.3.2.1. Element definitions: Confirm request end of supply

«Business entity» Confirm request end of supply	The information set sent by the Metering Point Administrator to the requesting Energy Supplier to confirm end of supply.
Confirm request end of supply Additions	Information related to Confirm request end of supply, to be agreed on a national level.
Transaction ID	The unique identification of this set of information given by the Metering Point Administrator.
Business process ID	The unique identification, given by the Metering Point Administrator, of this Requested end of supply process that this response is a part of.
Confirm request end of supply Async Additions	Information related to the Confirm request end of supply, needed when using an asynchronous communication.
Reference to requesting Transaction ID	The Transaction ID from the request given by the requesting Energy Supplier.
End date	The date from when the Energy Supplier no longer is supplying this Accounting Point.
Accounting Point ID	The unique identification of the Accounting Point.
Energy Supplier ID	The unique identification of the Energy Supplier ending its supply that no longer will be supplying the Accounting Point.

Balance Responsible Party ID	The unique identification of the Balance Responsible Party that no longer will be balance responsible for this Accounting Point.
Shipper ID	The unique identification of the Shipper that no longer will be Shipper for this Accounting Point.

1.3.3. Reject request end of supply (Class Diagram)

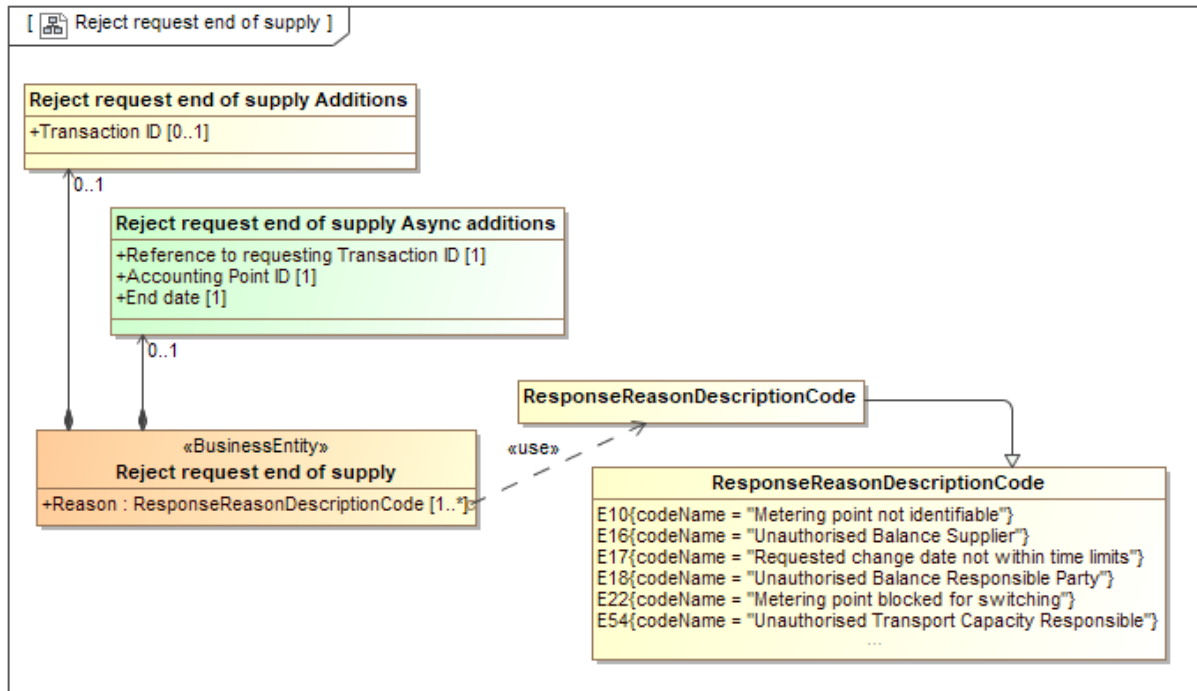


Figure 10 Reject request end of supply

1.3.3.1. Element definitions: Reject request end of supply

«Business entity» Reject request end of supply	The information set sent by the Metering Point Administrator to the requesting Energy Supplier to reject this end of supply.
Reason	One or more codes specifying the reason for the rejection of the requested end of supply.
Reject request end of supply Additions	Information related to rejection of end of supply, to be agreed on a national level.
Transaction ID	The unique identification of this set of information given by the Metering Point Administrator.
Reject request end of supply Async Additions	Additional information, related to the end of supply, needed when using asynchronous communication.
Reference to requesting Transaction ID	The Transaction ID from the request given by the requesting Energy Supplier.
End date	The requested date for this end of supply that is rejected.
Accounting Point ID	The unique identification of the Accounting Point.

1.3.4. Notify end of supply (Class Diagram)

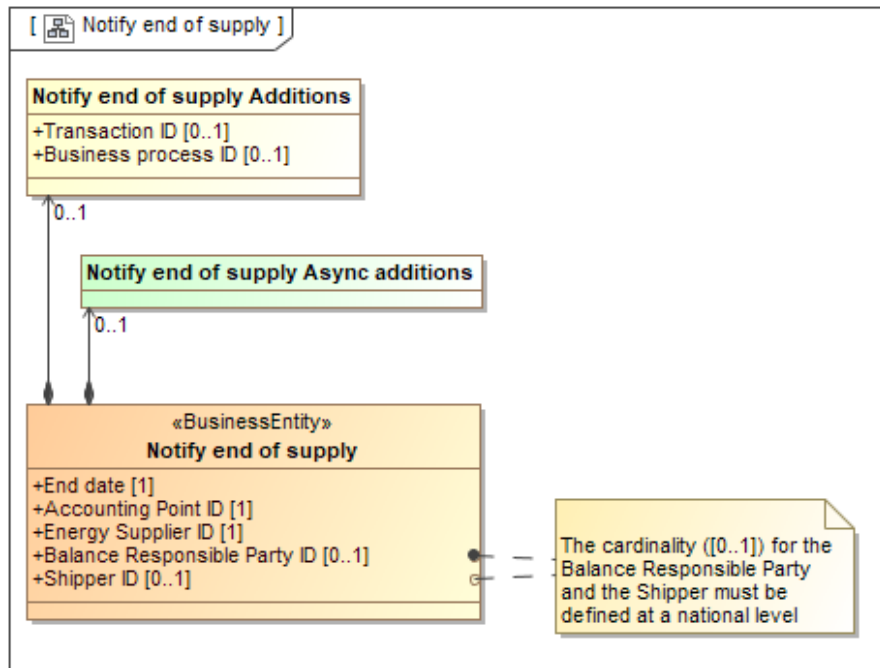


Figure 11 Notify end of supply

1.3.4.1. Element definitions: Notify end of supply

«Business entity» Notify end of supply	The information set, sent by the Metering Point Administrator, when notifying end of supply to Balance Responsible Party and/or Shipper.
End date	The date from when the Old Balance Responsible Party and the Old Shipper no longer has any responsibility for this Accounting Point.
Accounting Point ID	The unique identification of the Accounting Point.
Energy Supplier ID	The unique identification of the Energy Supplier that no longer is supplying this Accounting Point.
Balance Responsible Party ID	The unique identification of the Balance Responsible Party that no longer will be balance responsible for this Accounting Point
Shipper ID	The unique identification of the Shipper that no longer will be Shipper for this Accounting Point
Notify end of supply Additions	Additional information, related to the notification of end of supply, to Balance Responsible Party and/or Shipper, to be agreed on a national level.
Transaction ID	The unique identification of this set of information given by the Metering Point Administrator.
Business process ID	The unique identification, given by the Metering Point Administrator, of this end of supply process that this notification is a part of.
Notify end of supply Async Additions	Additional information, related to the Notify end of supply, to Balance Responsible Party and/or Shipper.

Appendix A. Header and Context information for the class diagrams

A.1. Header and Context Information attributes definitions

Class/attribute	Sector ¹	Description
Header and Context Information		The set of information specifying the information to be added to this payload to enable the exchange as a document.
Document Type		A code representing the document type used for the exchange of this set of information.
Business Reason		A code representing the business reason for the exchange of this set of information.
Ancillary Business Process Role		A code representing the market role taking part in this exchange together with the Responsible Role, responsible for the process/this exchange.

A.2. Request end of supply

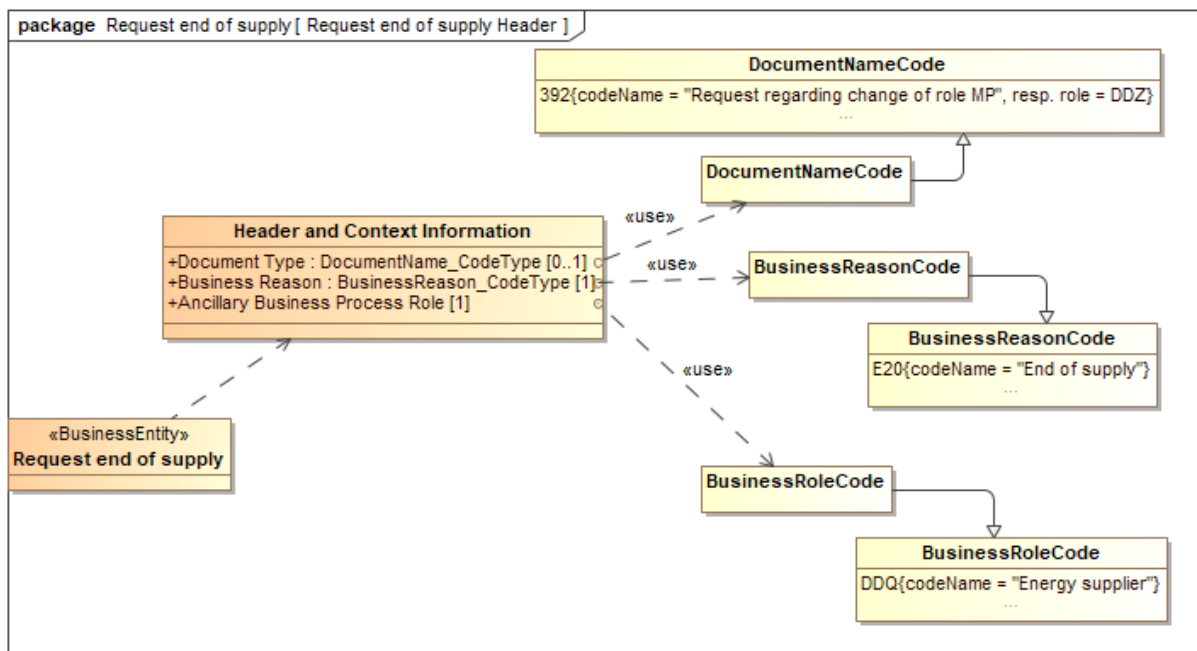


Figure 12 Class diagram: Header and Context Information Request end of supply

¹ It is assumed that Accounting Points are uniquely dedicated to either electricity or to gas.

A.3. Confirm request end of supply

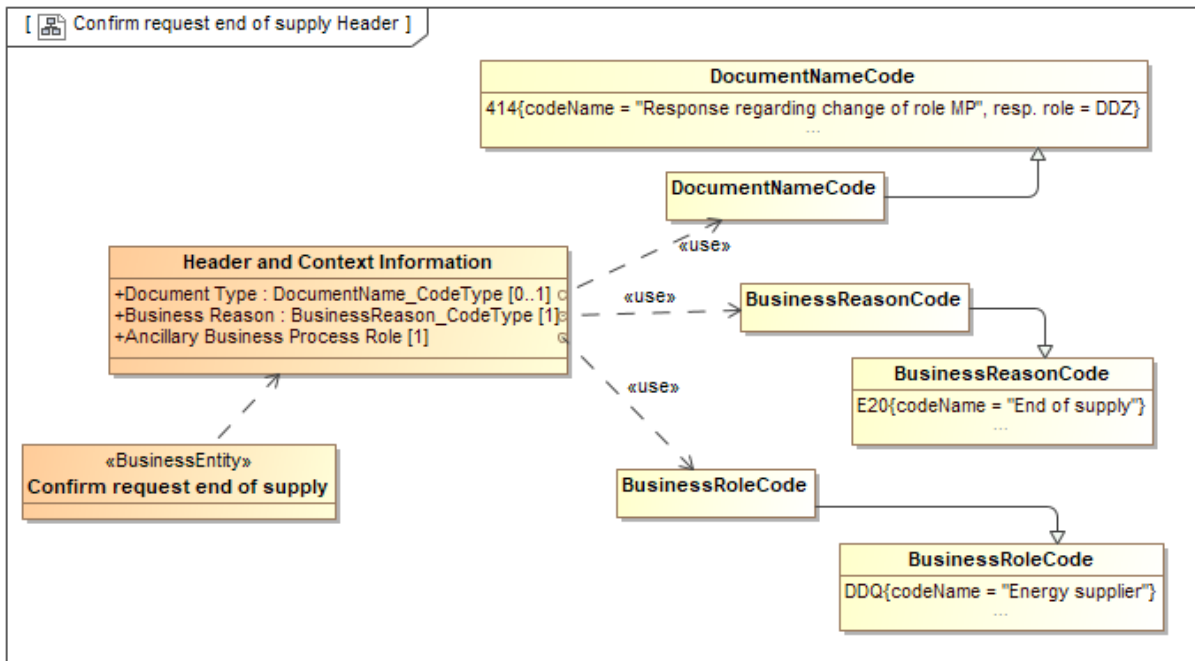


Figure 13 Class diagram: Header and Context Information Confirm request end of supply

A.4. Reject request end of supply

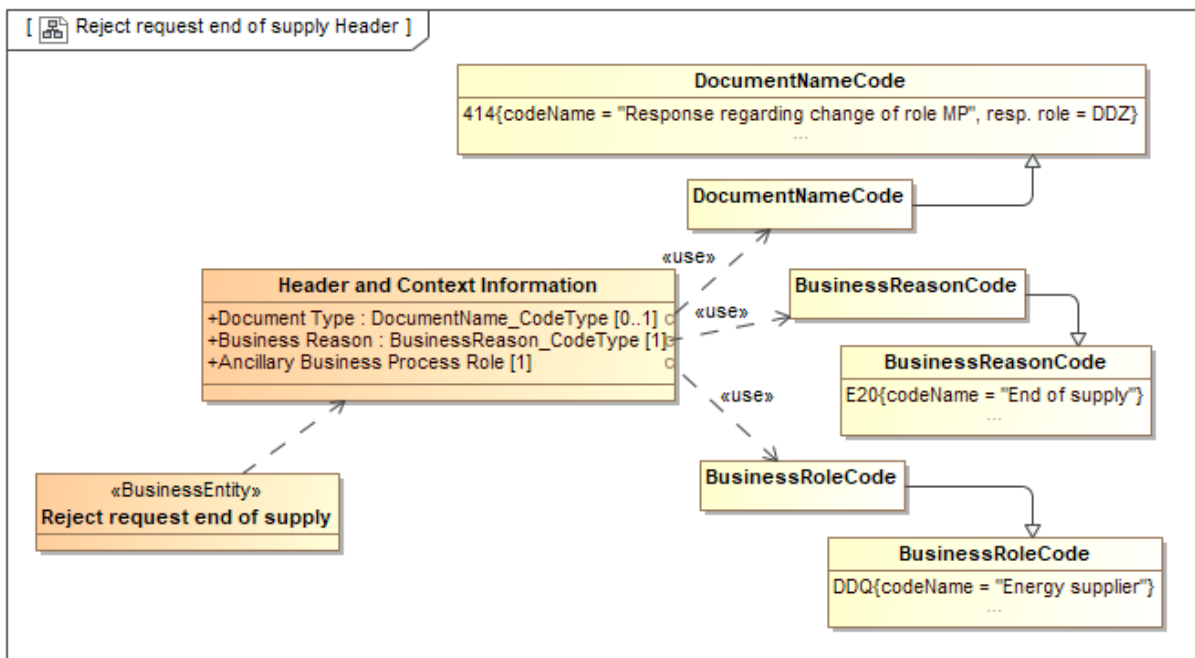


Figure 14 Class diagram: Header and Context Information Reject request end of supply

A.5. Notify end of supply

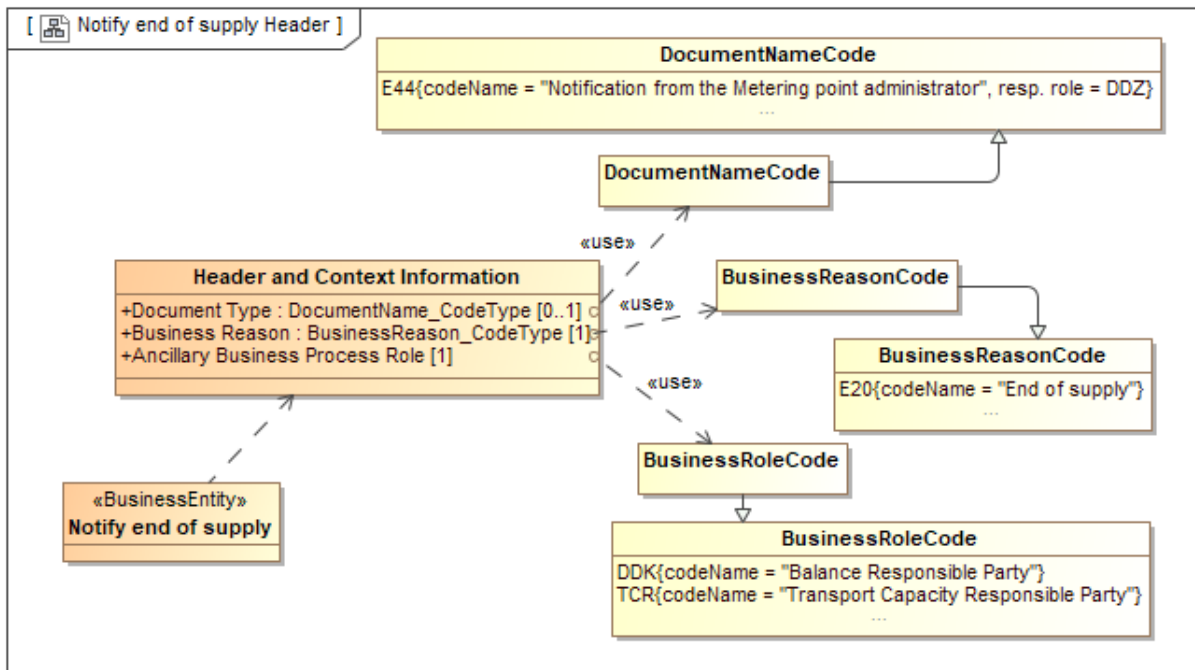


Figure 15 Class diagram: Header and Context Information Notify end of supply