



Business Requirements for Measure For Labeling

Status: Approved

Version: 1

Release: 0

Revision: -

Date: March, 2011

CONTENT

- A. About this document..... 3
 - A.1. Comments to the ebIX® model 3
 - A.2. References..... 3
 - A.2.1. Standards..... 3
 - A.2.2. ebIX® Documents 4
 - A.3. Participants in the project 5
 - A.4. Main changes since last version 5
- 1. Scope of the Business Requirements 7
- 2. Business Requirements View: Measure for Labeling 8
 - 2.1. Measure for Labeling (Business Process UseCase)..... 8
 - 2.1.1. Description 8
 - 2.1.2. Business Process..... 9
 - 2.1.3. Collect..... 9
 - 2.1.4. Validate for Labeling (Business Process UseCase)..... 9
 - 2.1.4.1. Description 9
 - 2.1.4.2. Business Process..... 10
 - 2.1.4.3. Exchange Validated Data for Labeling (Business Process UseCase)..... 10
 - 2.1.4.3.1. Description 11
 - 2.1.4.3.2. Business Process..... 11
 - 2.2. Business Partner View 12
 - 2.2.1. Business Partners Measure for Labeling 12
 - 2.3. Business Entity View..... 13
 - 2.3.1. Validated Data for Labeling to Certificate Issuer (Class Diagram)..... 13
 - 2.3.1.1. Validated Data for Labeling to Certificate Issuer (State Diagram) 13

A. About this document

This document contains ebIX® Business Requirements for the processes regarding the measured data for labeling (green certificates).

As a general introduction ebIX® has published a separate document “Introduction to ebIX® Business Requirements and Business Information Models” (*see [8]*). The introduction also includes the generic model elements that are not specific for a particular business process.

In line with UN/Cefact Modeling Methodology version 2 (UMM-2) ebIX® defines the business requirements before starting the actual modeling. The requirements have been specified by the ebIX® work group “Exchange Metered Data” and are the basis for the Business Information Model which is published in a separate document.

The Business Information Model is in turn the basis for the creation of XML schema’s and is expected to be the basis for the specification of web services in a next version of the model document. Since ebIX® supports both Edifact and XML the model will also serve as the basis for the creation of Message Implementation Guides for the mapping to Edifact UNSM’s. The Business Information Model and the syntax specific structures are specified by the ebIX® “Technical Committee” (ETC).

A.1. Comments to the ebIX® model

If you have comments or suggestions to the requirements please contact any member of the project group or directly to Kees Sparreboom, kees.sparreboom@capgemini.com .

A.2. References

A.2.1. Standards

- [1] UML Profile for UN/CEFACT’s Modeling Methodology (UMM), Base Module, Candidate for 2.0. (www.untmg.org/specifications/)
- [2] UML Profile for UN/CEFACT’s Modeling Methodology (UMM), Foundation Module, Candidate for 2.0. (www.untmg.org/specifications/)
- [3] UN/CEFACT UML Profile for Core Components Technical Specification 3.0, (status: Open Development Process Step 5 “Public Review”), (www.untmg.org/specifications/)
- [4] UN/Cefact Core Components Technical Specification Version 3.0 (Status: Implementation Verification, Second Iteration, <http://www.unece.org/cefact/codesfortrade/CCTS/CCTS-Version3.pdf>)
- [5] UN/CEFACT XML Naming and Design Rules Technical Specification Version 3.0, (www.unece.org/cefact/xml/UNCEFACT+XML+NDR+V3p0.pdf)
- [6] The Harmonized Role Model (for the Electricity Market) by ebIX®, ENTSO-E, and EFET (www.ebix.org)

- [7] Object Constraint Language, OMG Available Specification Version 2.0 formal, 1 May 2006 (www.omg.org/spec/OCL/2.0/)

A.2.2. ebIX® Documents

- [8] Introduction to ebIX® Business Requirements and Business Information Models (www.ebix.org)
- [9] Recommended Identification Schemes for the European Energy Market (www.ebix.org)
- [10] ebIX® model for Structuring of the European Energy Market: UMM 2 Business Requirements View for structuring of the European energy market, including customer switching and maintenance of master data, Draft for version 2.1.A, April 9th 2010 (www.ebix.org)
- [11] ebIX® Business Requirements for Measure for Collected Data (www.ebix.org)
- [12] ebIX® Business Information Model for Measure for Collected Data (www.ebix.org)
- [13] ebIX® Business Requirements for Measure for Imbalance Settlement (www.ebix.org)
- [14] *this document (ebIX® Business Requirements for Measure for Labeling (www.ebix.org))*
- [15] ebIX® Rules for mapping to Edifact, version 0.1.A, d.d. June 2008" (www.ebix.org)

Planned for publication later in 2010:

- [16] *ebIX® Business Information Model for Measure for Imbalance Settlement (www.ebix.org)*
- [17] *ebIX® Business Requirements for Measure for Reconciliation (www.ebix.org)*
- [18] *ebIX® Business Information Model for Measure for Reconciliation (www.ebix.org)*
- [19] *ebIX® Business Requirements for Measure for Billing (www.ebix.org)*
- [20] *ebIX® Business Information Model for Measure for Billing (www.ebix.org)*
- [21] *ebIX® Business Requirements for Measure, Determine Switch Read (www.ebix.org)*
- [22] *ebIX® Business Information Model for Measure, Determine Switch Read (www.ebix.org)*
- [23] *ebIX® Business Information Model for Measure for Labeling (www.ebix.org)*
- [24] *ebIX® CC's*
- [25] *ebIX® code lists*

A.3. Participants in the project

These Business Requirements as part of the ebIX® Model for the European Energy Market (see [8]) are made in a project with the members of EMD. For a list of members of EMD see www.ebix.org.

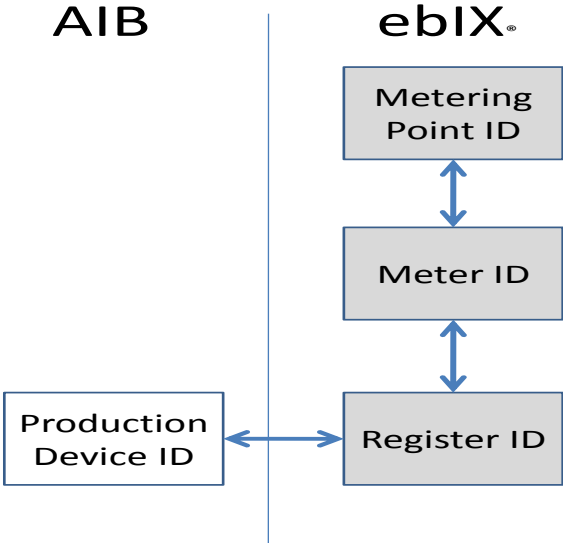
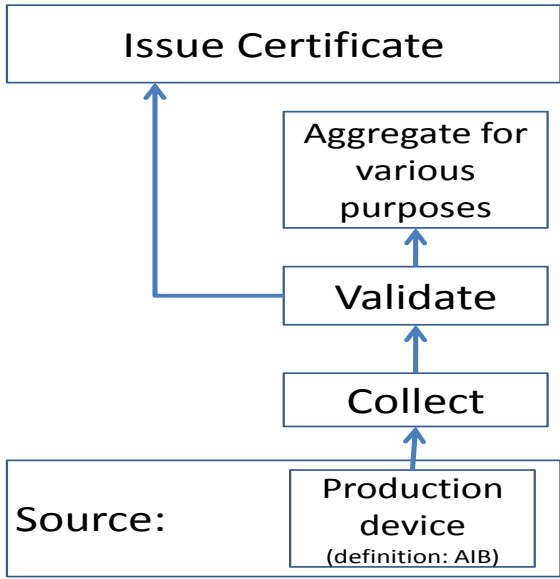
A.4. Main changes since last version

		Old	New	Clarification	Date
Version 0.0.-					
1.	All document			The lay-out has been brought in line with the ebIX® standard document lay-out	2010-10-27
2.	The exchange of validated data for Labeling to the Producer was removed.				2010-10-27
3.	The request for validated data for Labeling was removed.				2010-10-27
4.	For the class diagram for validated data		Either a quantity for generated or for delivered energy	Two options for the source of the collected are allowed: directly from the production device or from the register(s) for the MeteringPoint	2010-10-27
Version 0.0.A					
5.	For the class diagram for validated data		Either a quantity for generated or for delivered energy	OCL-specification for the XOR between sources of the collected data	2011-01-18
Version 0.0.B					

6.	For the class diagram for validated data			Some textual changes in the naming of the classes	2011-03-16
Version 1.0.-					

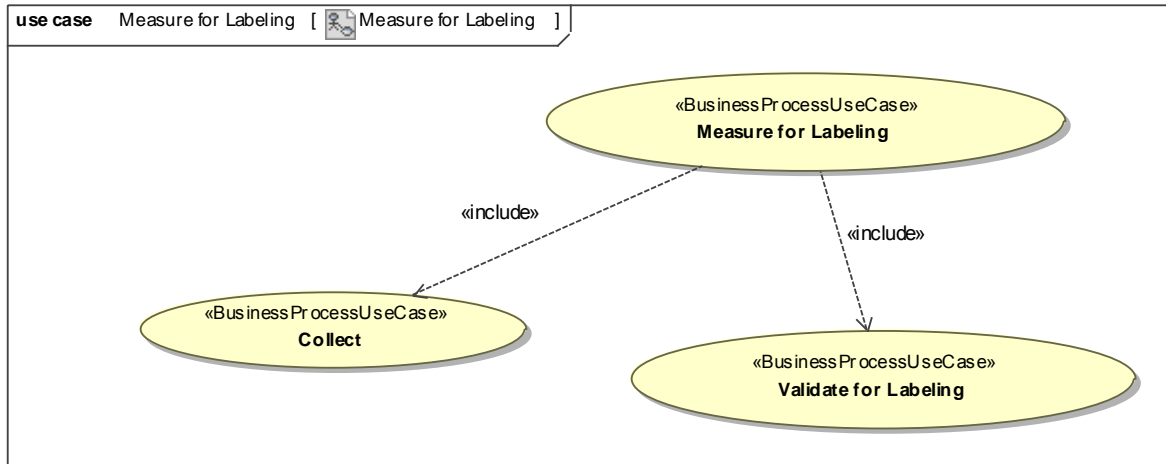
1. Scope of the Business Requirements

These Business requirements specify the exchange of validated data for the purpose of the creation of green certificates. These requirements are derived from the available documentation as published by AIB. We therefore assume, that collected data may either be obtained from registers directly linked to the production device or from register(s) linked to the Metering Point. The validated data are always exchanged per Metering Point, but the specification of the source has two options and therefore the type of quantity will have two options (either a generated quantity taken from the registers linked to the production device or a delivered quantity as established for the Metering Point).



2. Business Requirements View: Measure for Labeling

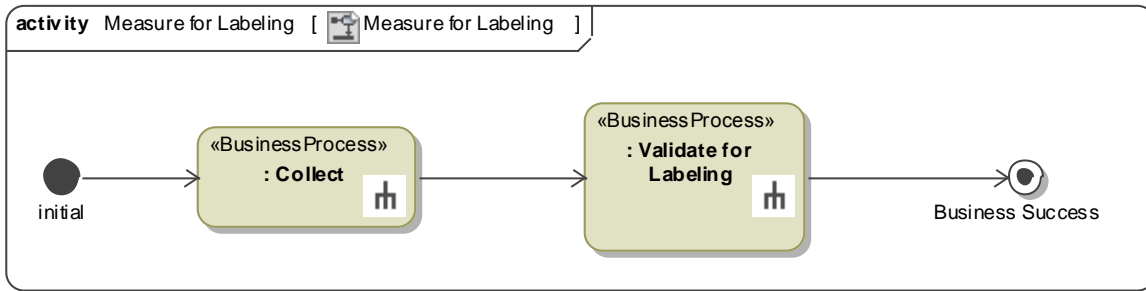
2.1. Measure for Labeling (Business Process UseCase)



2.1.1. Description

UseCase description: Measure for Labeling	
definition	Provides validated data for use in the labeling process to partners involved in this process.
beginsWhen	The timing of the various processes is guided by a time schedule (nationally defined). As a general rule can be stated, that the processes are executed on a monthly basis.
preCondition	Partners responsible for the execution of the processes should have access to relevant master data.
endsWhen	All processes included in the time schedule have been executed.
postCondition	All validated metered data are available at the partners so that the labeling process can be executed and the results can be verified.
Exceptions	<ul style="list-style-type: none"> • No master data available • Production device is not qualified
actions	See 2.1.2

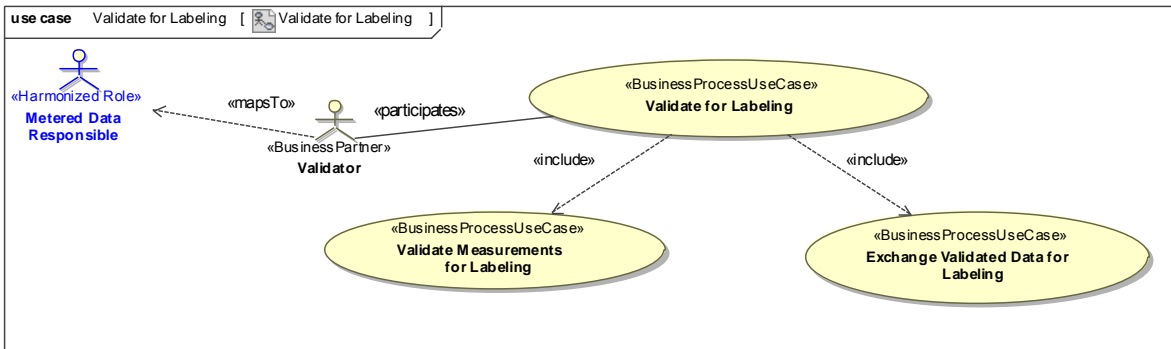
2.1.2. Business Process



2.1.3. Collect

See separate document: ebIX® Business Requirements for Measure for Collected Data (www.ebix.org).

2.1.4. Validate for Labeling (Business Process UseCase)

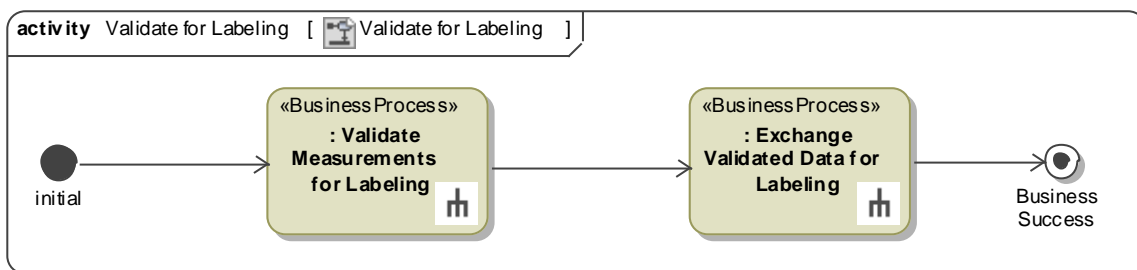


2.1.4.1. Description

UseCase description: Validate for Labeling	
definition	A Validator validates data in order to make these available to others.
beginsWhen	The Validator decides to or when the time schedule prescribes him to.
preCondition	The Validator has available: <ul style="list-style-type: none"> • collected data • relevant historic metered data • relevant quality standards • master data for the Production Device and for the Register/Meter & Metering Point • master data for the exchange of data
endsWhen	The validated metered data have been exchanged.

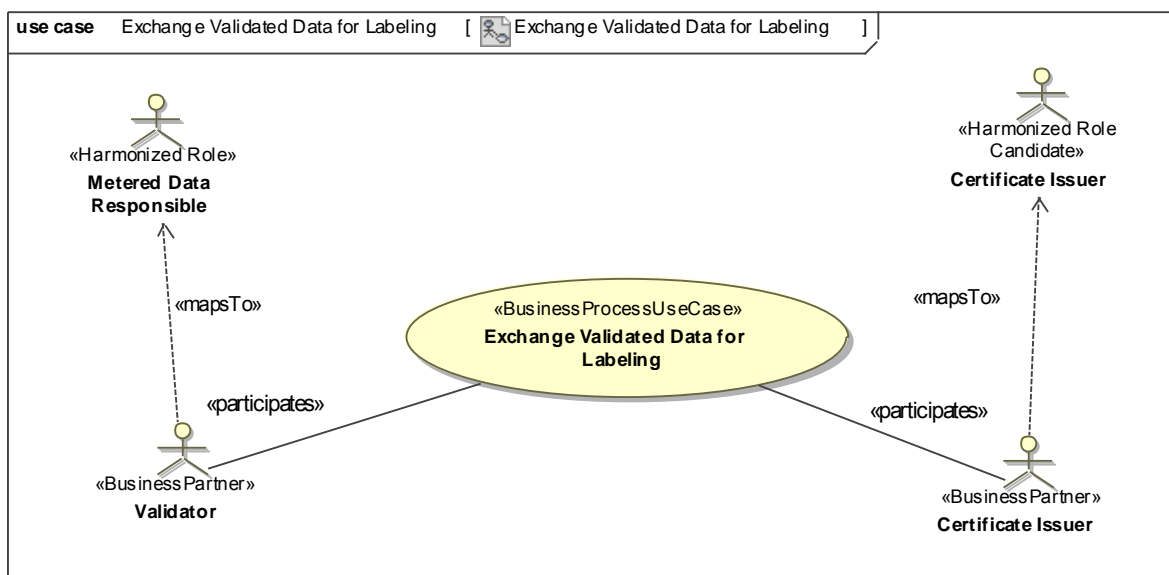
postCondition	The validated metered data are available for others.
exceptions	<ul style="list-style-type: none"> • No collected data available • No master data available • Production device is not qualified • Validated data delivered to wrong addressee
actions	See 2.1.4.2

2.1.4.2. Business Process



Note: the Business Process “Validate Measurements” is specified in the document Introduction to ebIX® Business Requirements and Business Information Models (www.ebix.org).

2.1.4.3. Exchange Validated Data for Labeling (Business Process UseCase)



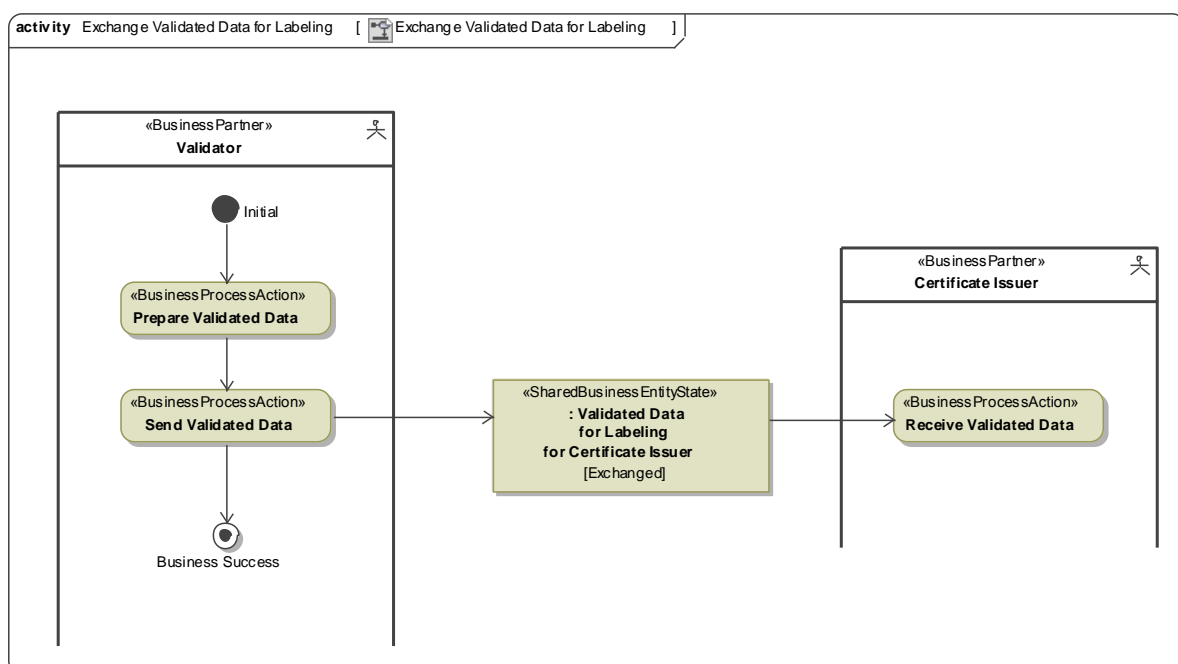
2.1.4.3.1. Description

UseCase description: Exchange Validated Data for Labeling	
definition	Validator sends validated data to Certificate Issuer
beginsWhen	Validator decides to.
preCondition	Validated Data are available.
endsWhen	The reception of the validated data has been acknowledged by the Certificate Issuer.
postCondition	Validated Data are available for the Certificate Issuer.
exceptions	none
actions	See 2.1.4.3.2

Remarks:

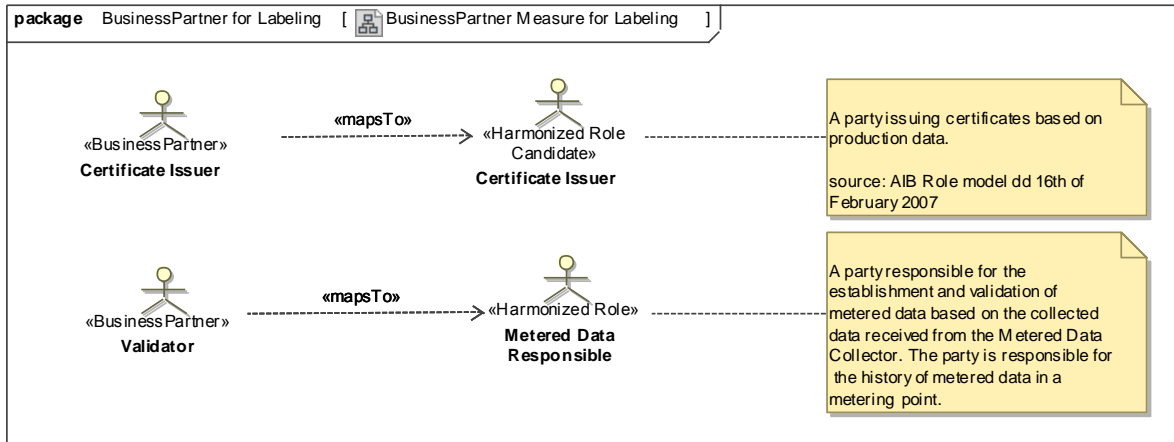
- The «BusinessPartner» Producer («Harmonized Role» is Party Connected to the Grid) is to be regarded as the owner of the data, but this does not imply that for process reasons the validated data are sent to this «BusinessPartner».
- It is assumed for these Business Requirements that the Certificate Issuer enables the Producer to keep track of the process (e.g. to be informed about the changes in the status of its account and thereby to keep track of the exchange of validated data on its behalf.)

2.1.4.3.2. Business Process



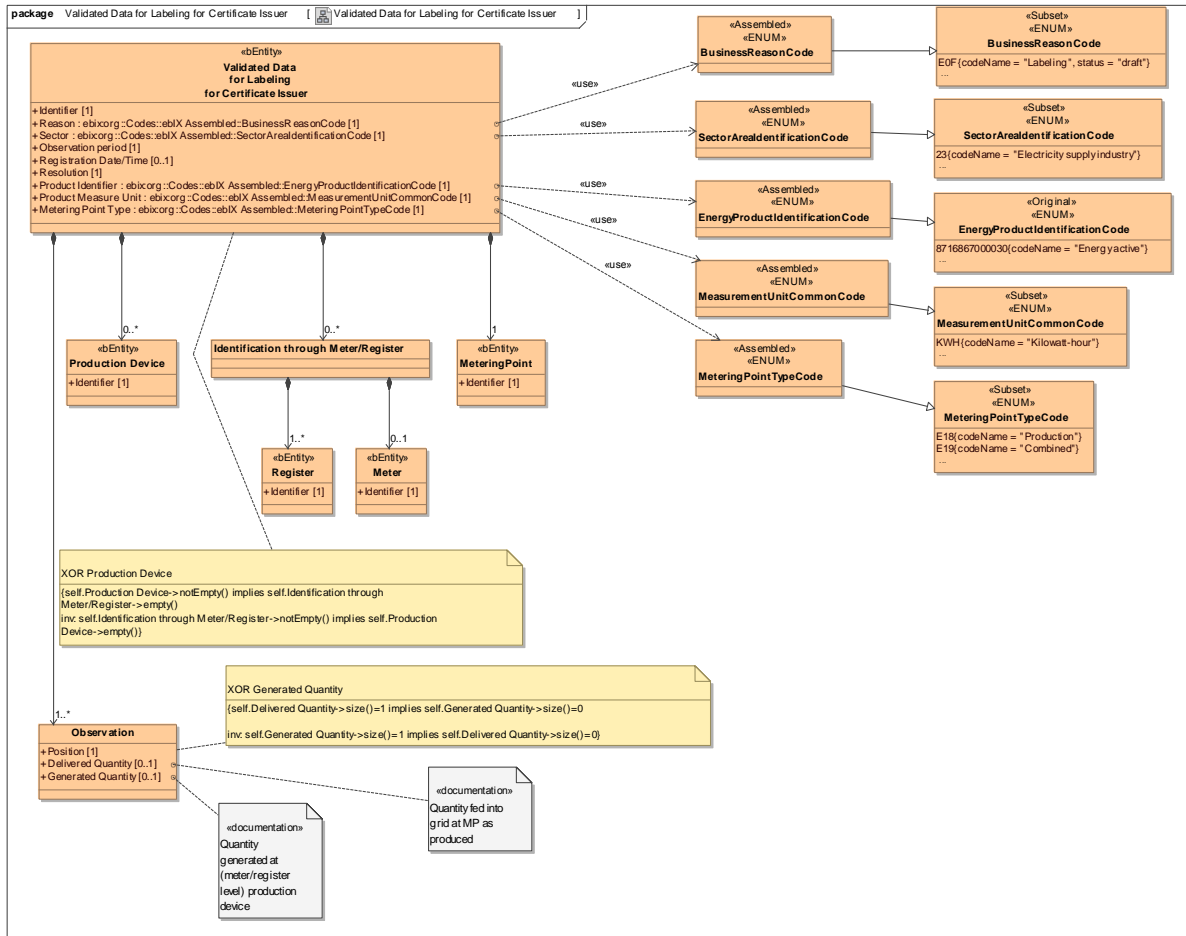
2.2. Business Partner View

2.2.1. Business Partners Measure for Labeling



2.3. Business Entity View

2.3.1. Validated Data for Labeling to Certificate Issuer (Class Diagram)



2.3.1.1. Validated Data for Labeling to Certificate Issuer (State Diagram)

